

PRODUCT NUMBER

20020315-XXXXXXLF

20020315-

PITCH

G: 5.00 mm  
H: 5.08 mm



POLES

02: 2 POLES  
03: 3 POLES


LF : DENOTED RoHS COMPATIBLE

1 : STANDARD PRODUCT  
W/ BOX PACKING

SCREW CODE

CODE	SCREW TYPE	AVAILABILITY
A	-/+ 	ON REQUEST ONLY
B	- 	STANDARD

PROPERTY TABLE

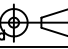
FCI SERIES NAME		21-500	21-508	
PITCH (mm)		5.00	5.08	
VOLTAGE RATING (VAC)		300	300	
CURRENT RATING (A)		16	16	
APPLICABLE WIRE RANGE (AWG)	1-WIRE	12~28	12~28	
	2-WIRE	18	18	
WIRE CROSS SECTION (mm <sup>2</sup> )	SOLID	1-WIRE	2.5	2.5
		2-WIRE	1.0	1.0
	STRANDED	1-WIRE	1.5	1.5
		2-WIRE	0.75	0.75
OPENING CONTACT HOUSING(mm <sup>2</sup> )		2.1x2.7	2.1x2.7	
WIRE STRIP LENGTH(mm)		6~7	6~7	
TORQUE +/−10% (N-m/Lb-in)		0.4/3.5	0.4/3.5	
SCREW		M3x0.5	M3x0.5	
WITHSTANDING VOLTAGE (kV)		1.6	1.6	
OPERATING TEMP. (°C)		−40~+115	−40~+115	
SOLDERING TEMP. (°C)		250±10 (5 sec.)	250±10 (5 sec.)	
POLES AVAILABLE		02~03	02~03	
SAFETY CERTIFICATE				

HOUSING CODE

CODE	COLOR	AVAILABILITY
1	GREEN(RAL 6018/T)	STANDARD
2	BLACK	ON REQUEST ONLY
3	GREY(RAL 7004/P)	ON REQUEST ONLY
4	BLUE(RAL 5015/A)	ON REQUEST ONLY

## NOTES:

1. MATERIALS  
1-1 HOUSING: THERMALPLASTIC RESIN, UL 94V-0 RATED,  
1-2 SCREW: STEEL, ZINC PLATED.  
1-3 CLAMP: COPPER ALLOY, NICKEL PLATED.  
1-4 TERMINAL: COPPER ALLOY, TIN PLATED.
2. PRODUCT SPECIFICATION REFER TO FCI GS-12-625.
3. PRODUCT PACKING SPECIFICATION REFER TO FCI GS-14-1394.
4. FCI, SAFETY CERTIFICATE LOGO AND SERIES NAME TO BE SHOWN ON PRODUCT SURFACE.
5. THE PRODUCTS WHERE THE PART NUMBER END IN "LF" MEET THE EUROPEAN UNION DIRECTIVE AND OTHER COUNTRY REGULATIONS AS DESCRIBED IN GS-22-008.
6. RECOMMENDED SOLDERING PROCESS BY WAVE SOLDER.

mat'l. code				surface ASME Y14.5	tolerance ASME Y14.5	projection 	product family TERMINAL BLOCK
ltr	ecn no	dr	date	tolerances unless otherwise specified			title
A	T10-0138	WL	083110	angles	X.±0.5	MM	TERMINAL BLOCK FIXED SIGNAL PLUG, VERTICAL WIRE INLET
B	T10-0165	WL	101210	tolerances	X.X±0.3	[INCH]	
C	T11-0014	WL	022411	X*±1"	X.XX±0.1	scale	
				dr	WENDY CHEN	081710	dwg no 20020315 sheet 1 of 3 size A4
				enr	JASON HSU	081710	
				chr	GARY HSIEH	081710	
				appd	JOSEPH HSIA	081710	
sheet index	revision sheet	C	C	C			type CUSTOMER Drawing
		1	2	3			



Copyright FCI.



FCIconnect.com

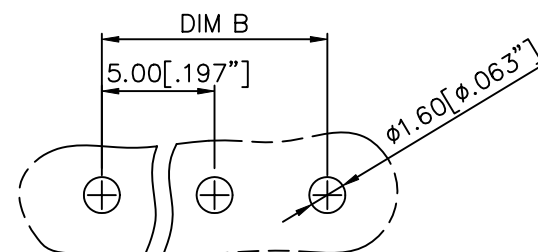
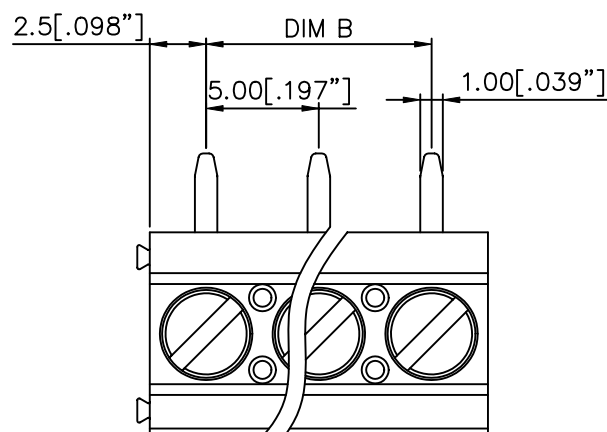


1 | 2

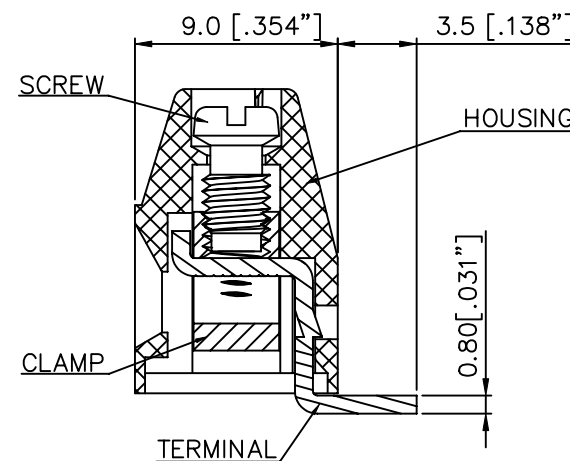
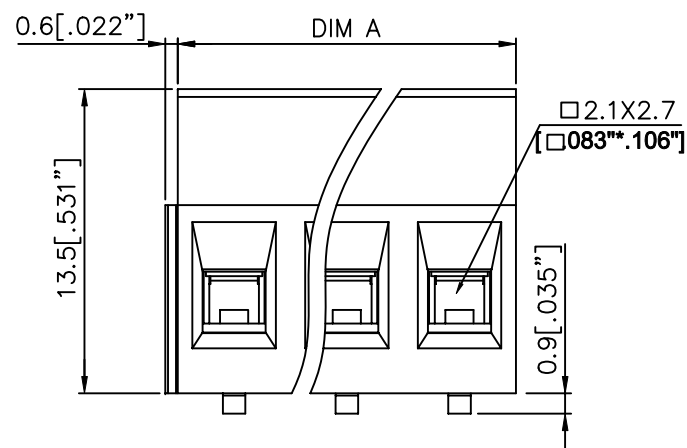
3

4

PRODUCT NUMBER	SERIES NAME	PITCH
20020315-GXXXXXXLF	21-500	5.00 mm



P.C.B LAYOUT



POLE	2	3
Dim A	10.0 [.394"]	15.0 [.590"]
Dim B	5.0 [.196"]	10.0 [.394"]
Tol.	$\pm 0.15 [.006"]$	

mat'l. code		surface ASME Y14.5	tolerance ASME Y14.5	projection 	product family TERMINAL BLOCK
ltr	ecn no	dr	date	tolerances unless otherwise specified	
c				angles $X \pm 1^\circ$	title TERMINAL BLOCK FIXED SIGNAL PLUG, VERTICAL WIRE INLET
				total $X.X \pm 0.5$	MM [INCH]
				line $X.XX \pm 0.1$	
		dr	WENDY CHEN 081710	scale	dwg no 20020315
		engr	JASON HSU 081710		sheet 2 of 3 size A4
		chr	GARY HSIEH 081710		type CUSTOMER Drawing
		appd	JOSEPH HSIA 081710		
sheet index	revision sheet				



Copyright FCI.



FCIconnect.com

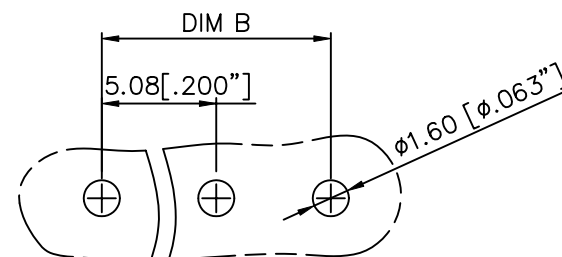
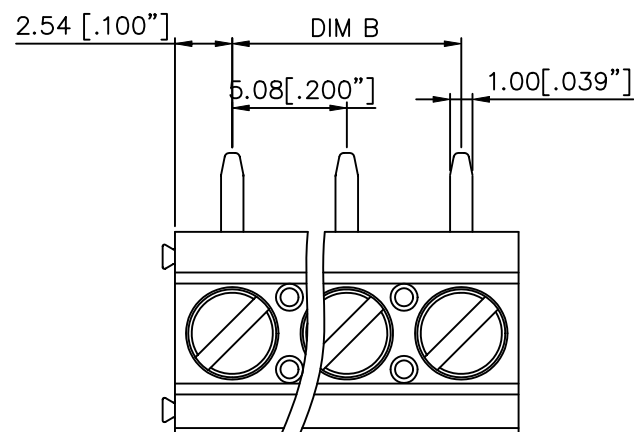


1 2

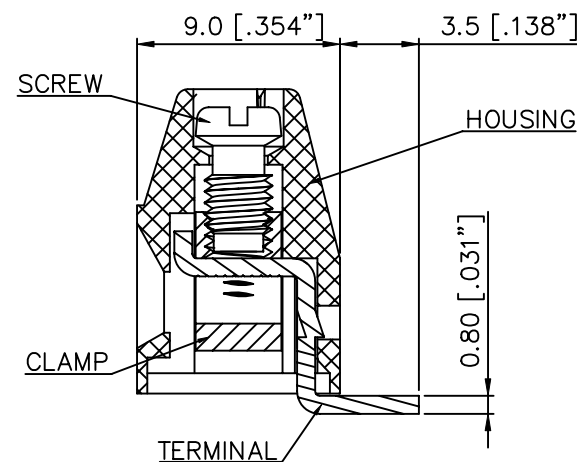
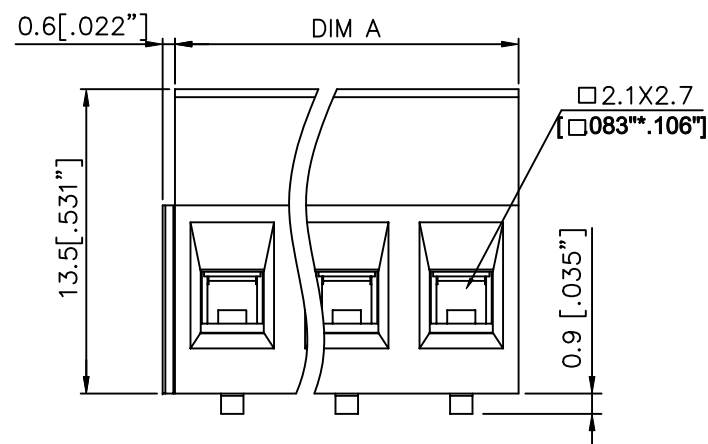
3

4

PRODUCT NUMBER	SERIES NAME	PITCH
20020315-HXXXXXXLF	21-508	5.08 mm



P.C.B LAYOUT



POLE	2	3
Dim A	10.16[.400"]	15.24[.600"]
Dim B	5.08[.200"]	10.16[.400"]
Tol.	±0.15[.006"]	

mat'l. code				surface ASME Y14.5	tolerance ASME Y14.5	projection 	product family TERMINAL BLOCK
ltr	ecn no	dr	date	tolerances unless otherwise specified			title
c				angles	X.±0.5	MM [INCH]	TERMINAL BLOCK
				X'±1"	X.X±0.3	scale	FIXED SIGNAL PLUG, VERTICAL WIRE INLET
					X.XX±0.1		dwg no
				dr	WENDY CHEN	081710	sheet 3 of 3
				enr	JASON HSU	081710	size
				chr	GARY HSIEH	081710	20020315
				appd	JOSEPH HSIA	081710	A4
sheet index	revision sheet						type
							CUSTOMER Drawing

# Mouser Electronics

Authorized Distributor

Click to View Pricing, Inventory, Delivery & Lifecycle Information:

[FCI / Amphenol:](#)

[20020315-G021B01LF](#) [20020315-H021B01LF](#) [20020315-G031B01LF](#) [20020315-H031B01LF](#)