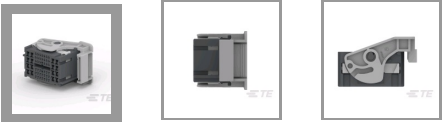




+ CONNECTORS

CONNECTOR HOUSINGS



✓ Active

TE CONNECTIVITY (TE)
56POS,MIXED,REC HSG,025,090, CODE B,ASSY

2287452-2
TE Internal Number: 2287452-2

Not Yet Reviewed for EU RoHS
Not Yet Reviewed for EU ELV

Connector System Wire-to-Wire
Connector Style Housing for female terminals
Mating Tab Width .64 mm [.025 in]
Sealable No
Centerline (Pitch) (mm) 2.2, 4
Centerline (Pitch) (in) .086, .157

↓ **PRODUCT DRAWING**
English

↓ **3D PDF**

DOCUMENTATION

Product Drawings

56 POS, MIXED, REC HSG, 025, 090,ASSY
PDF
English

CAD Files

3D PDF
PDF
3D

Customer View Model
2D_DXF.ZIP

English

Customer View Model

3D_IGS.ZIP

English

Customer View Model

3D_STP.ZIP

English

FEATURES



Please review product documents or [contact us](#) for the latest agency approval information.

Please Note: Use the Product Drawing for all design activity.

Product Type Features

- Connector System** Wire-to-Wire
- Connector Style** Housing for female terminals
- Sealable** No
- Hybrid Connector** Yes
- Connector & Contact Terminates To** Wire & Cable
- Primary Locking Feature** Integrated in Housing
- Strain Relief** No
- Row-to-Row Spacing (mm)** 3, 5
- Row-to-Row Spacing (in)** .118, .196

Configuration Features

- Number of Positions** 56
- Number of Rows** 4, 6

Body Features

- Color** Black
- Cable Exit Angle** 180°
- Connector Code** B
- Body Material** PBT

Contact Features

- Mating Tab Width** .64 mm [.025 in]

Mechanical Attachment

- Mounting Feature** Yes
- Terminal Position Assurance** No
- Polarized** Yes

Housing Features

- Centerline (Pitch) (mm)** 2.2, 4
- Centerline (Pitch) (in)** .086, .157

Dimensions

Width 30.1 mm [1.18 in]
Height 32.9 mm [1.29 in]
Length 47.6 mm [1.87 in]

Usage Conditions

Operating Temperature Range -40 – 125 °C [-40 – 257 °F]

Operation/Application

Circuit Application Signal

Packaging Features

Packaging Method Box & Tray
Packaging Quantity 400

Other

Connector Position Assurance Capable No
Serviceable Yes

Statement of Compliance

Statement of Compliance
PDF