

PLEASE CHECK WWW.MOLEX.COM FOR LATEST PART INFORMATION

Part Number:

0459840111

Status:

Active

Overview:

EXTreme LPHPower Connectors

Description:

1.27mm Pitch, EXTreme LPHPower Receptacle Header, Right-Angle, 12 Signal Contacts, Select Gold (Au) Plating, for 3.18mm Thick PC Board

Documents:

3D Model

Packaging Specification PK-45984-002-001 (PDF)

Drawing (PDF)

RoHS Certificate of Compliance (PDF)

Product Specification PS-45984-001-001 (PDF)

Agency Certification

CSA

LR19980

UL

E29179

General

Product Family

PCB Receptacles

Series

45984

Application

Board-to-Board, Power

Overview

EXTreme LPHPower Connectors

Product Name

EXTreme LPHPower

UPC

884982064898

Physical

(p)ower-(s)ignal Configuration

12s - 0p

Circuits (Loaded)

12

Circuits (maximum)

12

Color - Resin

Black

Durability (mating cycles max)

250

Flammability

94V-0

Glow-Wire Capable

No

Guide to Mating Part

No

Keying to Mating Part

None

Lock to Mating Part

No

Material - Metal

High Performance Alloy (HPA)

Material - Plating Mating

Gold over Nickel

Material - Plating Termination

Tin

Material - Resin

High Temperature Thermoplastic

Net Weight

1.162/g

Number of Rows

2

Orientation

Right Angle

PC Tail Length

4.50mm

PCB Locator

No

PCB Retention

None

PCB Thickness - Recommended

3.18mm

Packaging Type

Tray

Pitch - Mating Interface

1.27mm

Plating min - Mating

0.762µm

Plating min - Termination

3.810µm

Polarized to Mating Part

Yes

Polarized to PCB

Yes

Stackable

No

Surface Mount Compatible (SMC)

Yes

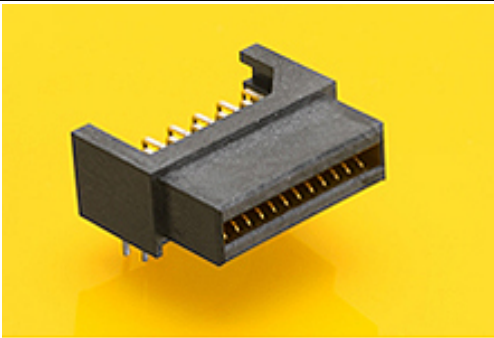
Temperature Range - Operating

-40° to +105°C

Termination Interface: Style

Through Hole

Electrical



Series image - Reference only

EU ELV

Not Relevant

EU RoHS

Compliant

China RoHS

REACH SVHC

Not Contained Per -  
ED/61/2018 (27 June  
2018)

Halogen-Free

Status

Low-Halogen

For more information, please visit [Contact US](#)

China ROHS

Green Image

ELV

Not Relevant

RoHS Phthalates

Not Contained

Search Parts in this Series

45984 Series

Mates With

45985 EXTreme LPHPower Headers,  
1.57mm Card Edge

|                               |         |
|-------------------------------|---------|
| Current - Maximum per Contact | 1.0A    |
| Grounding to PCB              | No      |
| Voltage - Maximum             | 250V AC |

**Solder Process Data**

|  |      |
|--|------|
| Duration at Max. Process Temperature (seconds) | 020  |
| Lead-freeProcess Capability                    | WAVE |
| Max. Cycles at Max. Process Temperature        | 003  |
| Process Temperature max. C                     | 260  |

**Material Info**

**Reference - Drawing Numbers**

|                         |                  |
|-------------------------|------------------|
| Packaging Specification | PK-45984-002-001 |
| Product Specification   | PS-45984-001-001 |
| Sales Drawing           | SD-45984-483     |

This document was generated on 12/20/2018

PLEASE CHECK [WWW.MOLEX.COM](http://WWW.MOLEX.COM) FOR LATEST PART INFORMATION