

Actuator

704.093.010I

Distribution by
DigiKey

DigiKey



<https://digikey.eao.com/p/704.093.010I>

Your product:



704.093.010I Actuator

FRONT

Front bezel material:	Aluminium
Front bezel colour:	Black
Front dimension:	Ø 35 mm

MOUNTING

Mounting cut-out:	Ø 30.5 mm
Design:	flush

OPERATING-/INDICATION PART

Lever material:	plastic
Lever shape:	long
Lever colour:	Black

ELECTRICAL CHARACTERISTICS

Standards:	The switches comply with the "Standards for low-voltage switching devices" DIN EN 60947-1
------------	---

MECHANICAL CHARACTERISTIC

Switching angle:	42° left / 42° right
Switching positions:	3 positions
Mechanical lifetime:	≤2.5 Mio. cycles of operation
Weight:	0.056 kg
Switching action:	Maintained - Rest - Maintained

AMBIENT CONDITION

Operating temperature:	– 40 °C ... + 55 °C
IP Protection:	IP65 front side
Storage temperature:	– 40 °C ... + 85 °C

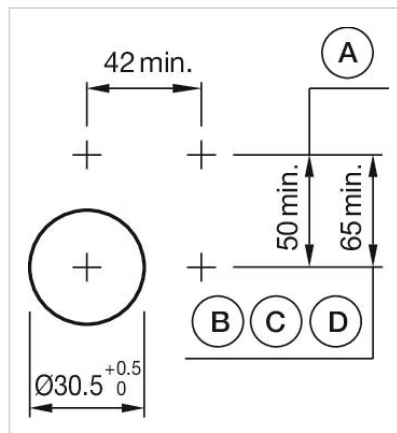
OTHER

Short Description: Actuator, Ø 30.5 mm, Ø 35 mm, optional illuminative, Black, long, Black, Aluminium, anodised, Maintained - Rest - Maintained

max. number of switching elements: 3

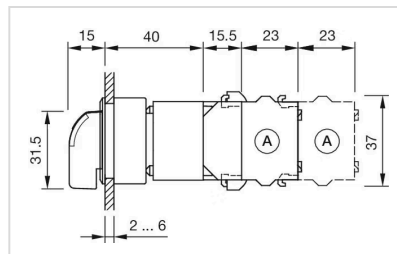
Hints: Max. 3 switching elements can be clipped on

Mounting cut-outs:



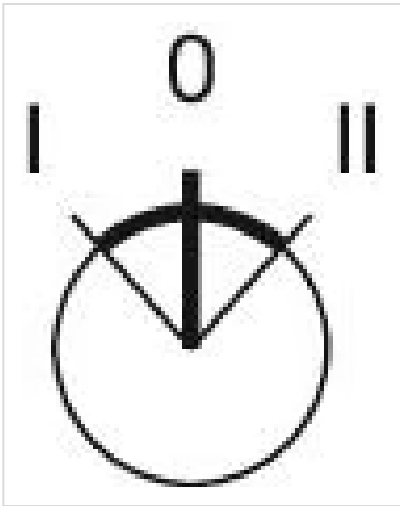
A = Screw terminal
B = Push-in terminal (PIT)
C = Plug-in terminal 6.3 mm x 0.8 mm
D = Double plug-in terminal 6.3 mm x 0.8 mm

Dimension drawings:



A = Screw terminal

Switching positions:



Wiring diagrams:

