

## Features

- Resistance range: 100 ohms to 1 megohm
- SIP and DIP packages
- Surface mount and through-hole available
- RoHS compliant\* (see How to Order "Termination" option)

For information on R/2R Thick Film Networks, download Bourns' R/2R Application Note.

## R/2R Series Thick Film Networks

### Product Characteristics

Resistance Range  
Models 4100, 4300, 4400 & 4800  
..... 100 ohms to 100K ohms  
Model 4600...100 ohms to 1 megohm  
Standard Tolerance .....  $\pm 2\%$

See applicable model data sheet for complete list of product characteristics.

### Environmental Characteristics

See applicable model data sheet for complete list of environmental characteristics.

### Physical Characteristics

See applicable model data sheet for complete list of physical characteristics.

### How To Order

#### 4116R - R2R - 501

Model \_\_\_\_\_  
(See "Available Models")

Electrical Configuration \_\_\_\_\_

R2R = Standard R/2R\*\*  
121 = Reversed R/2R\*\*

Resistance Code (for value of R) \_\_\_\_\_

- First 2 digits are significant; third digit represents the number of zeros to follow.
- 2R is double the value of R in circuit.

Terminations \_\_\_\_\_

LF = Tin-coated (RoHS compliant version)  
(Model 4416P is ONLY available in the RoHS compliant version.)

Blank = Tin/Lead

(Model 4416P is not available with tin/lead terminations.)

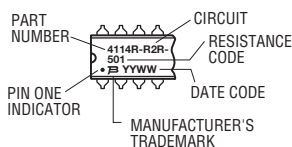
\*\*Standard R2R Electrical Configuration not available for Model 4600H Series.

\*\*\*Reversed R/2R Electrical Configuration not available for Model 4600H, 4600M or 4600X Series.

For Standard Values Used in Capacitors, Inductors, and Resistors, [click here](#).

### Typical Part Marking

Represents total content. Layout may vary.

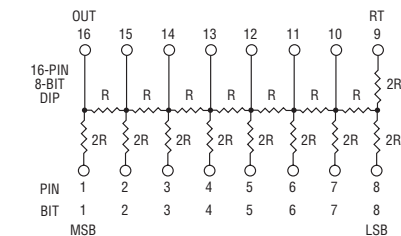


### Product Dimensions

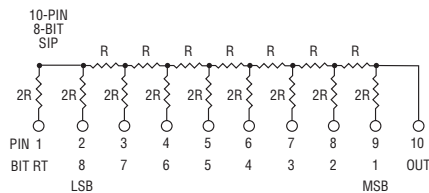
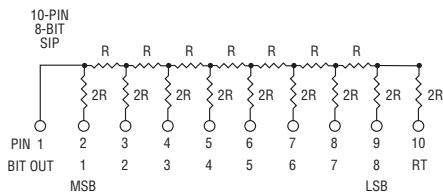
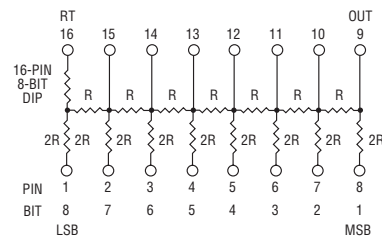
See applicable model data sheet for complete product dimensions.

### Resistor Schematic

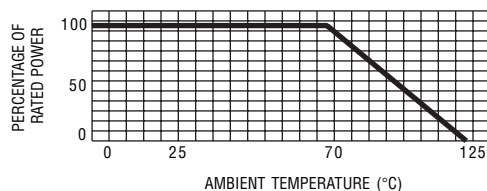
#### R2R Circuit



#### 121 Circuit



### Power Derating Curve



### Power Rating per Resistor

#### Model

4100R, 4300R, 4400P, 4600X***, 4800P.....	0.125
4300M, 4600M*** .....	0.170
4300H.....	0.200

#### Power per Resistor (Watts)

\*RoHS Directive 2002/95/EC Jan 27, 2003 including Annex. Specifications are subject to change without notice.

Customers should verify actual device performance in their specific applications.

# Mouser Electronics

Authorized Distributor

Click to View Pricing, Inventory, Delivery & Lifecycle Information:

## Bourns:

[4610X-R2R-471](#) [4816P-R2R-103](#) [4116R-R2R-104](#) [4816P-R2R-104](#) [4610X-R2R-104](#) [4610X-R2R-253](#) [4611M-R2R-104](#) [4816P-R2R-502](#) [4816P-R2R-501](#) [4610X-R2R-222](#) [4310R-R2R-103](#) [4610X-R2R-503](#) [4610X-R2R-103](#) [4310R-R2R-103LF](#) [4310R-R2R-104](#) [4310R-R2R-104LF](#) [4310R-R2R-203LF](#) [4610X-R2R-103LF](#) [4116R-R2R-503LF](#) [4116R-R2R-253LF](#) [4310R-R2R-102LF](#) [4310R-R2R-253LF](#) [4607H-R2R-104LF](#) [4610X-R2R-104LF](#) [4610X-R2R-122LF](#) [4610X-R2R-253LF](#) [4816P-R2R-103LF](#) [4610X-R2R-153](#) [4116R-R2R-501](#) [4610X-R2R-102](#) [4816P-R2R-503](#) [4116R-R2R-253](#) [4816P-R2R-253](#) [4610X-R2R-122](#) [4614M-R2R-104](#) [4116R-R2R-104LF](#) [4608X-R2R-105LF](#) [4116R-R2R-103LF](#) [4308R-R2R-503LF](#) [4610X-R2R-102LF](#) [4610X-R2R-503LF](#) [4816P-R2R-501LF](#) [4610X-R2R-222LF](#) [4816P-R2R-503LF](#) [4310R-R2R-203](#) [4310R-R2R-102](#) [4310R-R2R-503](#) [4310R-R2R-253](#) [4310R-R2R-222](#) [4816P-R2R-474LF](#) [4308R-R2R-103LF](#) [4816P-R2R-105LF](#) [4310M-R2R-503LF](#) [4116R-R2R-501LF](#) [4310R-R2R-503LF](#) [4606X-R2R-103LF](#) [4816P-R2R-253LF](#) [4816P-R2R-104LF](#)