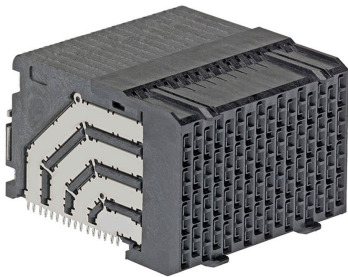




Part Number : [1713201026](#)
Product Description : Impel 90 Ohm, 4 Pair Right-Angle Daughtercard, 1.90mm Pitch, Unguided, 16 Columns, 128 Circuits, Plated Through Hole Dimension 0.36mm
Series Number : 171320
Status : Active
Product Category : Backplane Connectors



Documents & Resources

Drawings

[Drawing 1713201026_sd.pdf](#)
[Packaging Design Drawing PK-78888-085-001.pdf](#)

3D Models and Design Files


[3D Model 1713201026_stp.zip](#)
[Electrical Model Document 1713201218-000.pdf](#)
[Electrical Model Document 1713202061REVA-000.pdf](#)
[S-Parameter Model 1713201218-000.zip](#)
[S-Parameter Model 1713202061-000.zip](#)
[Symbol Footprint Data SYM-171320-1026-001.zip](#)

Specifications

[Application Specification 1713209994-AS-000.pdf](#)
[Application Specification AS-171320-990-001.pdf](#)
[Application Specification AS-171320-991-001.pdf](#)
[Application Specification AS-171320-992-001.pdf](#)
[Product Specification PS-171320-999-001.pdf](#)

Product Environment Compliance

Compliance

GADSL/IMDS	Not Relevant
China RoHS	
EU ELV	Not Relevant
Low-Halogen Status	Low-Halogen per IEC 61249-2-21
REACH SVHC	Not Contained per D(2024)4144-DC (27 June 2024)
EU RoHS	Compliant per EU 2015/863

Multiple Part Product Compliance Statements

- Eu RoHS
- REACH SVHC
- Low-Halogen

Multiple Part Industry Compliance Documents

- IPC 1752A Class C
- IPC 1752A Class D
- Molex Product Compliance Declaration
- IEC-62474
- chemSHERPA (xml)

EU RoHS Certificate of Compliance

Part Details

General

Status	Active
Category	Backplane Connectors
Series	171320
Description	Impel 90 Ohm, 4 Pair Right-Angle Daughtercard, 1.90mm Pitch, Unguided, 16 Columns, 128 Circuits, Plated Through Hole Dimension 0.36mm
Application	Coplanar, Daughtercard
Component Type	PCB Receptacle
Product Family	Impel and Impel Plus Backplane Solutions
Product Name	Impel
UPC	887191302553

Agency

UL	E29179
----	--------

Electrical

Current - Maximum per Contact	0.75A
Data Rate	40.0 Gbps
Impedance	90Ω
Shield Type	Full Shield
Voltage - Maximum	29.9V AC (RMS)/DC

Physical

Circuits (Loaded)	128
Circuits (maximum)	128
Color - Resin	Black
Durability (mating cycles max)	200
First Mate / Last Break	No
Guide to Mating Part	No
Keying to Mating Part	None
Material - Metal	High Performance Alloy (HPA)
Material - Plating Mating	Gold
Material - Plating Termination	Tin
Material - Resin	High Temperature Thermoplastic
Net Weight	37.133/g
Number of Columns	16
Number of Pairs	4
Number of Rows	8
Orientation	Right Angle
Packaging Type	Tray
PC Tail Length	1.30mm
PCB Locator	No
PCB Retention	None
PCB Thickness - Recommended	1.00mm
Pitch - Mating Interface	1.90mm
Pitch - Termination Interface	1.90mm
Plating min - Mating	0.762µm
Temperature Range - Operating	-55° to +85°C

Solder Process Data

Lead-Free Process Capability	N/A
------------------------------	-----

Mates With / Use With

Mates with Part(s)

Description	Part Number
-------------	-------------

Impel 90 Ohm, 4 Pair Vertical Backplane Header, 1.90mm Pitch, Unguided, Open Endwalls, 16 Columns, 128 Circuits, Pin Length 4.90mm, Plated Through Hole Dimension 0.36mm	<u>1713151607</u>
Impel 90 Ohm, 4 Pair Vertical Backplane Header, 1.90mm Pitch, Unguided, Open Endwalls, 16 Columns, 128 Circuits, Pin Length 5.50mm, Plated Through Hole Dimension 0.36mm	<u>1713151608</u>