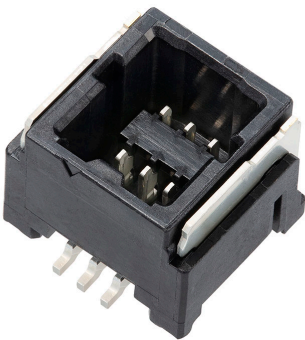




Part Number : [2077600471](#)
Product Description : 1.25mm Pitch, Micro-Lock Plus PCB Header with Potting Capability, Dual Row, Vertical, Surface Mount, Tin-Bismuth Plating, 4 Circuits, Low-Halogen, Black
Series Number : 207760
Status : Active
Product Category : PCB Headers and Receptacles



Documents & Resources


Drawings
[2077600471_sd.pdf](#)

3D Models and Design Files
[2077600471.dxf](#)
[2077600471.pdf](#)
[2077600471_stp.zip](#)

Specifications
[5054320000-AS-000.pdf](#)
[2077609200-SPK-200.pdf](#)
[2045230001-PS-000.pdf](#)
[2045231001-PS-000.pdf](#)

Product Environment Compliance

Compliance

GADSL/IMDS	Compliant with Exemption 33; 44
China RoHS	
EU ELV	Not Relevant
Low-Halogen Status	Low-Halogen per IEC 61249-2-21
REACH SVHC	Not Contained per D(2024)4144-DC (27 June 2024)
EU RoHS	Compliant per EU 2015/863

[Multiple Part Product Compliance Statements](#)
- Eu RoHS

- REACH SVHC

- Low-Halogen

Multiple Part Industry Compliance Documents

- IPC 1752A Class C

- IPC 1752A Class D

- Molex Product Compliance Declaration

- IEC-62474

- chemSHERPA (xml)

EU RoHS Certificate of Compliance

Part Details

General

Status	Active
Category	PCB Headers and Receptacles
Series	207760
Description	1.25mm Pitch, Micro-Lock Plus PCB Header with Potting Capability, Dual Row, Vertical, Surface Mount, Tin-Bismuth Plating, 4 Circuits, Low-Halogen, Black
Application	Signal, Wire-to-Board
Component Type	PCB Header
Product Name	Micro-Lock Plus
UPC	193264084685

Agency

UL	E29179
----	--------

Electrical

Current - Maximum per Contact	2.0A
Voltage - Maximum	50V AC (RMS)/DC

Physical

Breakaway	No
Circuits (Loaded)	4
Circuits (maximum)	4
Color - Resin	Black

Durability (mating cycles max)	30
First Mate / Last Break	No
Flammability	94V-1
Glow-Wire Capable	No
Guide to Mating Part	Yes
Keying to Mating Part	Yes
Lock to Mating Part	Yes
Material - Metal	Brass
Material - Plating Mating	Tin-Bismuth
Material - Plating Termination	Tin-Bismuth
Material - Resin	Polyamide
Net Weight	685.010/mg
Number of Rows	2
Orientation	Vertical
Packaging Type	Embossed Tape on Reel
PCB Locator	No
PCB Retention	Yes
Pitch - Mating Interface	1.25mm
Pitch - Termination Interface	1.25mm
Plating min - Mating	1.000µm
Plating min - Termination	1.000µm
Polarized to Mating Part	Yes
Polarized to PCB	Yes
Robotic Placement	Vacuum Pick-Up Area
Shrouded	Fully
Stackable	No
Temperature Range - Operating	-40° to +105°C
Termination Interface Style	Surface Mount

Mates With / Use With

Mates with Part(s)

Description	Part Number
1.25mm Pitch Micro-Lock Plus Dual Row Receptacle Housings	<u>204523</u>

This document was generated on Oct 29, 2024