

Actuator

51-
256.0256

Distribution by
DigiKey

DigiKey



<https://digikey.eao.com/p/51-256.0256>

Your product:



51-256.0256 Actuator

FRONT

Front form:	round
Front dimension:	Ø 24,5 mm

MOUNTING

Design:	raised
Mounting type:	Panel mounting

OPERATING-/INDICATION PART

Lens illumination:	non illuminative
Lens material:	Plastic
Lens colour:	Blue
Lens optics:	opaque
Lens shape:	mushroom-head

ELECTRICAL CHARACTERISTICS

Contacts:	1 NC / 1 NO
Switching voltage and switching current:	250 VAC, 5 A (ohmic) 24 VDC, 2 A (inductive, L:R = 30 ms)
Switching rating:	250 V @ 5 A

MECHANICAL CHARACTERISTIC

Tightening torque:	Fixing nut max. 0.5 Nm
Operating force:	18 ... 21 N (depending on the switching element)

Weight:	0.011 kg
Switching action:	Maintained
Mechanical lifetime:	100 000 cycles of operation
Switching system:	Snap-action switching element
Switching system:	Self-cleaning, double-break snap action switching system, 1 normally closed and 1 normally open contact per element.
Contact material:	Gold
Terminal:	Soldering terminal

AMBIENT CONDITION

Storage temperature:	– 40 °C ... + 85 °C
IP front protection:	IP65, according to DIN EN 60529
Operating temperature:	– 25 °C ... + 55 °C

CERTIFICATE

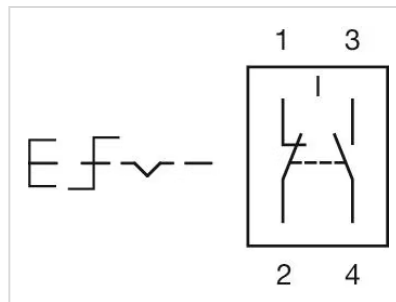
Approbations:	CB (IEC 61058-1), CSA, ENEC (EN 61058-1), UL
REACH:	REACH compliant
RoHS:	RoHS compliant
Conformities:	CE, UKCA, 2006 / 42 / EC (MD), 2011 / 65 / EC (RoHS)

OTHER

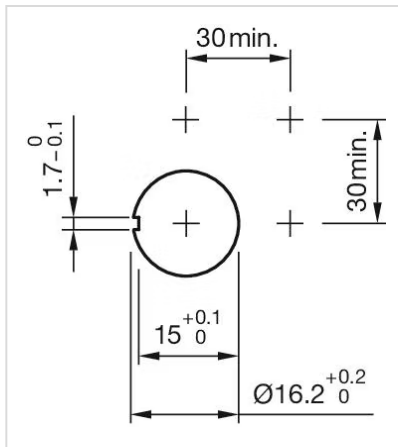
Housing colour:	Black
Hints:	Marking arrows

Short Description: Actuator, Ø 24,5 mm, mushroom-head, non illuminative, Blue, Plastic, opaque, round, 1 NC / 1 NO, Maintained, Soldering terminal, IP65, according to DIN EN 60529

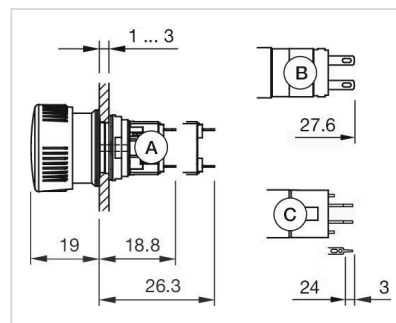
Wiring diagrams:



Mounting cut-outs:



Dimension drawings:



A = Solder terminal
 B = Plug-in terminal $2.8 \text{ mm} \times 0.5 \text{ mm}$
 C = Universal terminal $2.0 \text{ mm} \times 0.5 \text{ mm}$