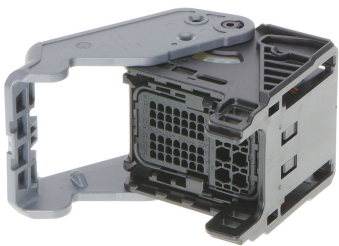




**Part Number :** [5601514832](#)  
**Product Description :** Compactus CTX-J Sealed Connector, 48 Circuits, 42 x 0.50mm and 6 x 2.80mm Terminals, 2.80mm Side Wire Output  
**Series Number :** 560151  
**Status :** Active  
**Product Category :** Connector Housings



## Documents & Resources

**Drawings**  
[5601514832\\_sd.pdf](#)

## Product Environment Compliance

### Compliance

GADSL/IMDS	Duty-To-Declare
China RoHS	
EU ELV	Compliant per 2000/53/EC
Low-Halogen Status	Low-Halogen per IEC 61249-2-21
REACH SVHC	Not Contained per D(2024)4144-DC (27 June 2024)
EU RoHS	Compliant per EU 2015/863

### Multiple Part Product Compliance Statements

- Eu RoHS
- REACH SVHC
- Low-Halogen

### Multiple Part Industry Compliance Documents

- IPC 1752A Class C
- IPC 1752A Class D
- Molex Product Compliance Declaration
- IEC-62474
- chemSHERPA (xml)

### EU RoHS Certificate of Compliance

## Part Details

## General

Status	Active
Category	Connector Housings
Series	560151
Description	Compactus CTX-J Sealed Connector, 48 Circuits, 42 x 0.50mm and 6 x 2.80mm Terminals, 2.80mm Side Wire Output
Application	Automotive, Power, Wire-to-Board
Product Family	Compactus
Product Name	Compactus
UPC	191130088737

## Physical

Circuits Detail	42 x 0.50mm, 6 x 2.80mm terminals
Circuits (maximum)	48
Color - Resin	Black
Gender	Receptacle
Glow-Wire Capable	No
Keying to Mating Part	None
Lock to Mating Part	Yes
Material - Resin	PBT
Net Weight	55.270/g
Number of Rows	6
Packaging Type	Tray
Panel Mount	No
Pitch - Mating Interface	2.45mm
Stackable	No
Temperature Range - Operating	-40° to +120°C

---

## Use with Part(s)

Description	Part Number
CTX-J50 Female Terminals	<u>560121</u>
CTX-J 280 Female Terminals	<u>560122</u>

CTX-J50 Dummy Plugs	<u>560144</u>
CTX-J280 Dummy Plugs	<u>560145</u>
Compactus Wire Dress Covers	<u>560189</u>