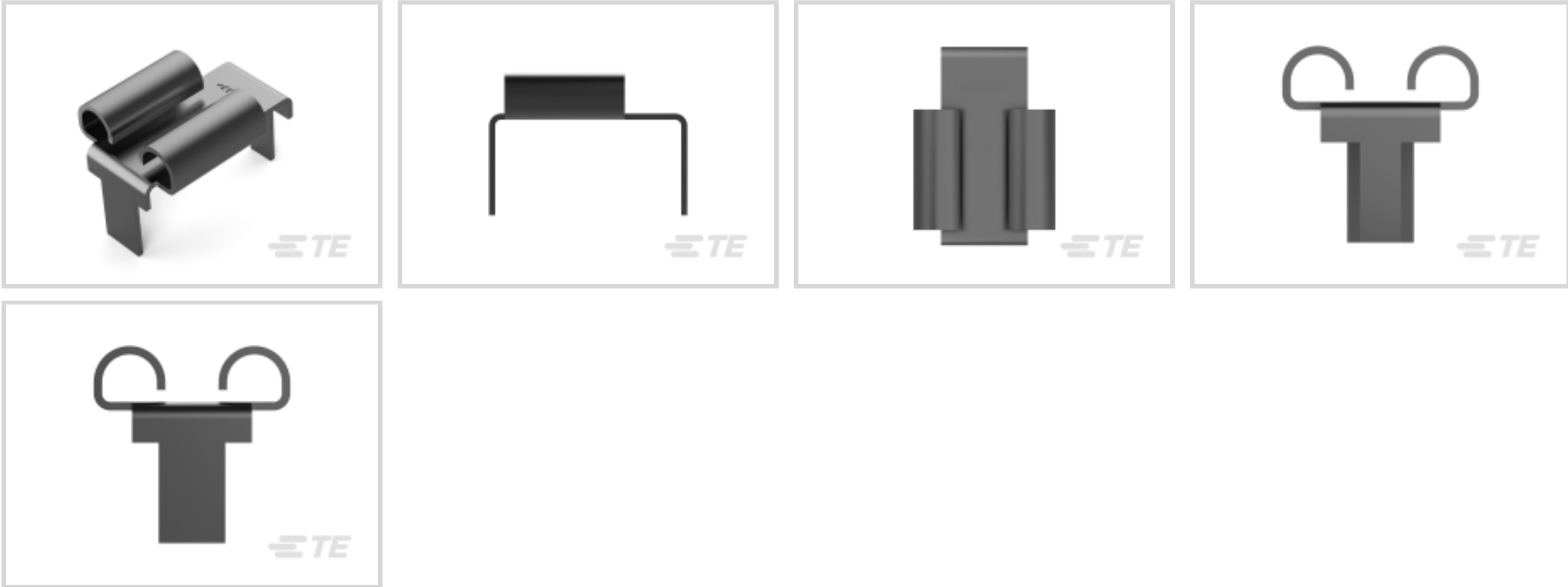




Terminals & Splices > PCB Terminals



PCB Terminal Type: **Receptacle**  
PCB Thickness (Recommended): **1.57 mm [ .062 in ]**  
Mating Tab Width: **6.35 mm [ .25 in ]**  
Mating Tab Thickness: **.51 mm [ .02 in ]**  
Profile Height from PCB: **2.3 mm [ .092 in ]**

Features

Product Type Features

Insertion Force	Normal
-----------------	--------

Configuration Features

Connection Capacity	Single
---------------------	--------

Contact Features

PCB Contact Termination Area Plating Material Thickness	2.03 μm[80 μin]
Contact Mating Area Plating Material Thickness	2.03 μm[80 μin]
Crimp Type	F-Crimp
PCB Terminal Type	Receptacle
Mating Tab Width	6.35 mm[.25 in]
Mating Tab Thickness	.51 mm[.02 in]
Terminal Plating Material	Tin
Terminal Size	6.35
Terminal Orientation	Right Angle

Termination Features

--	--



Termination Method to PCB	Through Hole - Solder
Product Terminates To	Printed Circuit Board

Mechanical Attachment

Wire Insulation Support	Without
-------------------------	---------

Dimensions

Extension Below Board	3.81 mm[.15 in]
Terminal Material Thickness	.3 mm[.012 in]
PCB Thickness (Recommended)	1.57 mm[.062 in]
Profile Height from PCB	2.3 mm[.092 in]

Usage Conditions

Insulation Option	Uninsulated
Operating Temperature Range	-30 – 110 °C[-22 – 230 °F]

Industry Standards

Compatible With Agency/Standards Products	CSA
---	-----

Packaging Features

Packaging Quantity	3000
Packaging Method	Reel

Other

Line	FASTON .250
------	-------------

Product Compliance

For compliance documentation, visit the product page on [TE.com](#)>

EU RoHS Directive 2011/65/EU	Compliant
EU ELV Directive 2000/53/EC	Compliant
China RoHS 2 Directive MIIT Order No 32, 2016	No Restricted Materials Above Threshold
EU REACH Regulation (EC) No. 1907/2006	Current ECHA Candidate List: JUNE 2024 (241) Candidate List Declared Against: JUNE 2024 (241) Does not contain REACH SVHC
Halogen Content	Low Halogen - Br, Cl, F, I < 900 ppm per homogenous material. Also BFR/CFR/PVC Free
Solder Process Capability	Wave solder capable to 240°C



Product Compliance Disclaimer

This information is provided based on reasonable inquiry of our suppliers and represents our current actual knowledge based on the information they provided. This information is subject to change. The part numbers that TE has identified as EU RoHS compliant have a maximum concentration of 0.1% by weight in homogenous materials for lead, hexavalent chromium, mercury, PBB, PBDE, DBP, BBP, DEHP, DIBP, and 0.01% for cadmium, or qualify for an exemption to these limits as defined in the Annexes of Directive 2011/65/EU (RoHS2). Finished electrical and electronic equipment products will be CE marked as required by Directive 2011/65/EU. Components may not be CE marked. Additionally, the part numbers that TE has identified as EU ELV compliant have a maximum concentration of 0.1% by weight in homogenous materials for lead, hexavalent chromium, and mercury, and 0.01% for cadmium, or qualify for an exemption to these limits as defined in the Annexes of Directive 2000/53/EC (ELV). Regarding the REACH Regulation, the information TE provides on SVHC in articles for this part number is based on the latest European Chemicals Agency (ECHA) ‘Guidance on requirements for substances in articles’ posted at this URL: <https://echa.europa.eu/guidance-documents/guidance-on-reach>

Compatible Parts

 TE Part # 63969-1 FASTON 205/250 PCB MOUNTED TPBR	 TE Part # 1217080-1 FASTON 205/250 PCB MOUNTED TPBR	 TE Part # 63968-1 FASTON 205/250 LIF PCB MOUNTED TPBR	 TE Part # 63994-1 FASTON 205/250 PCB MOUNTED TPBR
 TE Part # 62806-1 FASTON 250 PCB TAB TPBR	 TE Part # 1217137-1 FASTON 250/205 REC PCB TPBR	 TE Part # 62751-1 FASTON 250 PCB TAB TPBR	

Also in the Series | FASTON 250

 Compression Connectors(4)	 Crimp Terminal Housings(132)	 Insertion & Extraction Tools(6)	 Magnet Wire Terminals(1)
-------------------------------	----------------------------------	-------------------------------------	------------------------------



PCB Terminals(134)



Quick Disconnects(426)



Splices(4)

Customers Also Bought



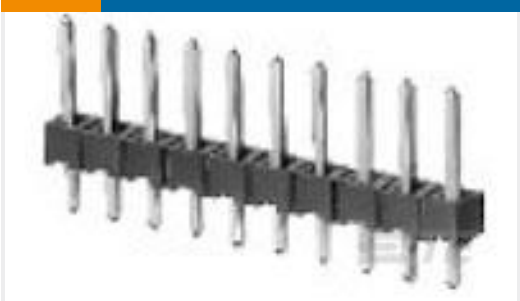
TE Part #292172-4  
CT POST HDR ASSY 4P IN-TUBE BL



TE Part #7-188275-8  
MICRO-MATCH SMD FTE



TE Part #1470224-3  
HPI 2.5MM EMIX A'SSY V/T 3P



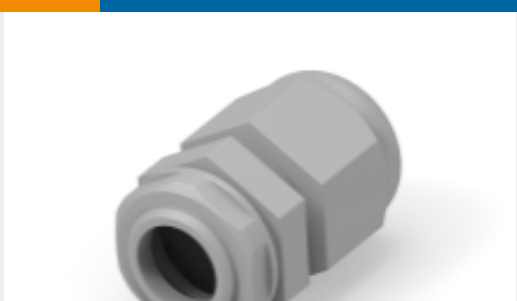
TE Part #5-146278-4  
04 MODII HDR SRST B/A .100CL



TE Part #2176155-5  
TLM 0805 0.25W R022 5% 100PPM 5K RL



TE Part #YDTS20F11-98PNV001  
RECP ASSY



TE Part #1478768-4  
ANTI-VIB NYLON GLD 20MM GREY



TE Part #1478768-5  
ANTI-VIB NYLON GLD 25MM GREY

Documents

Product Drawings

250 FASTON,REC.,TPPB

English

CAD Files

3D PDF

3D

Customer View Model

ENG\_CVM\_CVM\_1217107-1\_E.2d\_dxf.zip

English

Customer View Model

ENG\_CVM\_CVM\_1217107-1\_E.3d\_igs.zip

English

Customer View Model

ENG\_CVM\_CVM\_1217107-1\_E.3d\_stp.zip

English

By downloading the CAD file I accept and agree to the Terms and Conditions of use.



Datasheets & Catalog Pages

FASTON PCB Tabs and Receptacles

English

PRINTED CIRCUIT BOARD TERMINALS AND DISCONNECTS

English