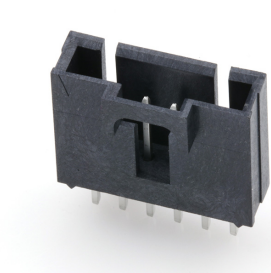




Part Number : [1719710106](#)
Product Description : 2.54mm Pitch SL Header, Single Row, Vertical, LCP, Shrouded, Through Hole, 0.38µm Selective Gold (Au) Plating, 6 Circuits
Series Number : 171971
Status : Active
Product Category : PCB Headers and Receptacles



Documents & Resources


Drawings
[1719710106_sd.pdf](#)
[1719710000-PK-000.pdf](#)

3D Models and Design Files
[1719710106_stp.zip](#)

Specifications
[1719710000-PS-000.pdf](#)
[PS-70400-001.pdf](#)

Product Environment Compliance

Compliance

GADSL/IMDS	Compliant with Exemption 44; 33
China RoHS	
EU ELV	Not Relevant
Low-Halogen Status	Low-Halogen per IEC 61249-2-21
REACH SVHC	Not Contained per D(2024)4144-DC (27 June 2024)
EU RoHS	Compliant per EU 2015/863

Multiple Part Product Compliance Statements
- Eu RoHS
- REACH SVHC
- Low-Halogen

Multiple Part Industry Compliance Documents

- IPC 1752A Class C
- IPC 1752A Class D
- Molex Product Compliance Declaration
- IEC-62474
- chemSHERPA (xml)

EU RoHS Certificate of Compliance

Part Details

General

Status	Active
Category	PCB Headers and Receptacles
Series	171971
Description	2.54mm Pitch SL Header, Single Row, Vertical, LCP, Shrouded, Through Hole, 0.38µm Selective Gold (Au) Plating, 6 Circuits
Application	Signal, Wire-to-Board
Component Type	PCB Header
Product Name	SL
UPC	889056784559

Electrical

Current - Maximum per Contact	3.0A
Voltage - Maximum	250V

Physical

Breakaway	No
Circuits (Loaded)	6
Circuits (maximum)	6
Color - Resin	Black
First Mate / Last Break	No
Glow-Wire Capable	No
Guide to Mating Part	No
Keying to Mating Part	None
Lock to Mating Part	Yes
Material - Metal	Brass

Material - Plating Mating	Gold
Material - Plating Termination	Matte Tin
Material - Resin	Liquid Crystal Polymer
Net Weight	1.166/g
Number of Rows	1
Orientation	Vertical
Packaging Type	Tube
PC Tail Length	3.30mm
PCB Locator	No
PCB Retention	None
PCB Thickness - Recommended	1.57mm
Pitch - Mating Interface	2.54mm
Pitch - Termination Interface	2.54mm
Plating min - Mating	0.380µm
Plating min - Termination	2.000µm
Polarized to Mating Part	Yes
Polarized to PCB	Yes
Shrouded	Fully
Temperature Range - Operating	-40° to +105°C
Termination Interface Style	Through Hole

Mates With / Use With

Mates with Part(s)

Description	Part Number
SL Single Row Female Insulation Displacement Connector Assemblies	<u>70400</u>
SL Single Row Crimp Housings and CPA Retainers	<u>70066</u>
SL Single Row Female Receptacles	<u>70430</u>