



ALL RIGHTS RESERVED. NO PORTION OF THIS PUBLICATION, WHETHER IN WHOLE OR IN PART CAN BE REPRODUCED WITHOUT THE EXPRESS WRITTEN CONSENT OF SPC TECHNOLOGY.

SPC-F005.DWG

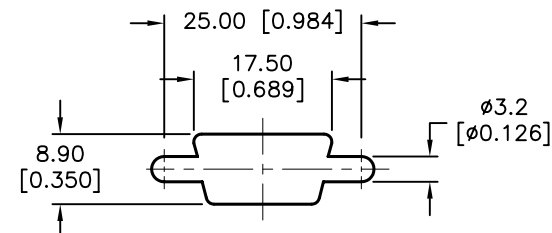
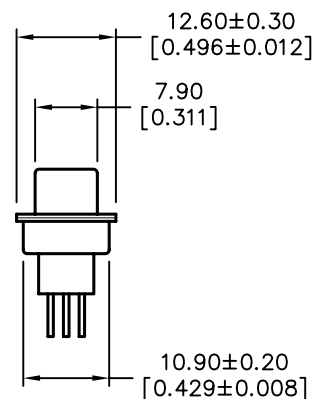
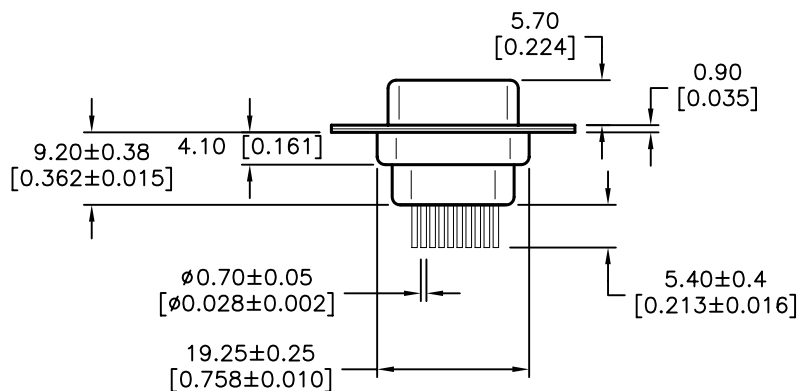
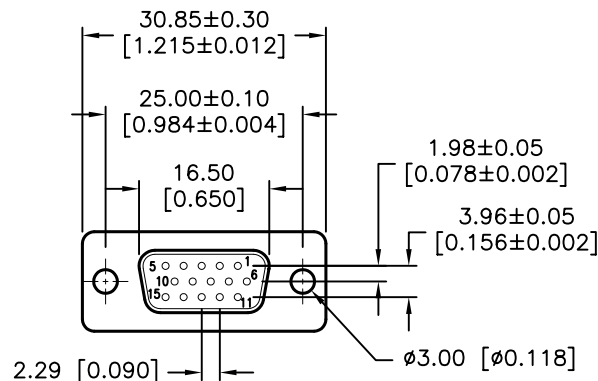
## REVISIONS

DOC. NO. SPC-F005 \* Effective: 7/8/02 \* DCP No: 1398

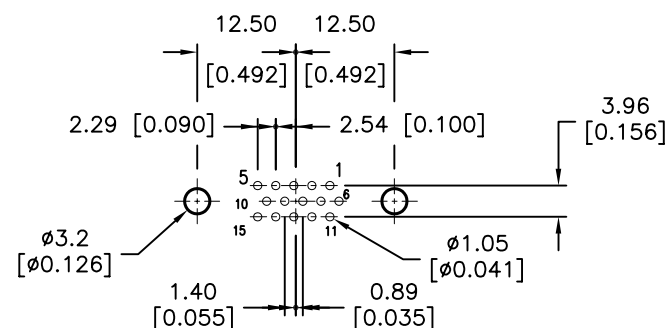
DCP #	REV	DESCRIPTION	DRAWN	DATE	CHECKD	DATE	APPRVD	DATE
1876	A	RELEASED	EO	07/25/06	SA	07/25/06	HO	07/25/06



RoHS  
Compliant



**PANEL CUTOUT**



**PCB LAYOUT**

### Specifications:

1. Shell: Steel, Tin Plated
2. Insulator: PBT +30% Fiber-Glass, Black UL94V-0 Rated
3. Contact: Brass, Stamped-Pin, Gold-Plated
4. Current Rating: 5 AMPS
5. Contact Resistance: 15 miliohms Max
6. Insulation Resistance: 1000 Megohms Min
7. Voltage: 500 VAC for 1 Minute
8. Temperature: -50°C to +100°C

DISCLAIMER:  
ALL STATEMENTS AND TECHNICAL INFORMATION CONTAINED HEREIN ARE BASED UPON INFORMATION AND/OR TESTS WE BELIEVE TO BE ACCURATE AND RELIABLE. SINCE CONDITIONS OF USE ARE BEYOND OUR CONTROL, THE USER SHALL DETERMINE THE SUITABILITY OF THE PRODUCT FOR THE INTENDED USE AND ASSUME ALL RISK AND LIABILITY WHATSOEVER IN CONNECTION THEREWITH.

### TOLERANCES:

Unless Otherwise Specified

.X ±0.35 [0.014]  
.XX ±0.15 [0.006]

### DRAWN BY:

EKLAS ODISH

CHECKED BY:

SAMI ALNADI

APPROVED BY:

HISHAM ODISH

### DATE:

07/25/06

DATE:

07/25/06

DATE:

07/25/06

### DRAWING TITLE:

15 Pin High-Density S-Sub DIP Socket

### SIZE

A

### DWG. NO.

SPC15408

SCALE: NTS

U.O.M.: mm [INCHES]

### ELECTRONIC FILE

79K4990.DWG

SHEET: 1 OF 1

### REV

A