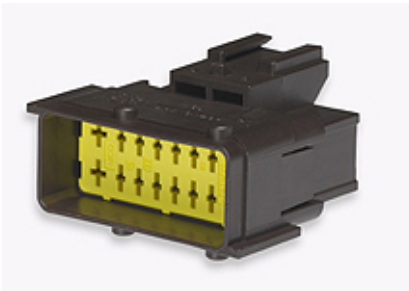




**Part Number :** [982761001](#)  
**Product Description :** 3.33mm / 6.00mm Pitch  
Hybrid Male Inline Housing, Dual Row, 16  
Circuits, Black  
**Series Number :** 98276  
**Status :** Active  
**Product Category :** Connector Housings



## Documents & Resources

**Drawings**  
[982761001\\_sd.pdf](#)

**3D Models and Design Files**  
[982761001\\_stp.zip](#)

**Specifications**  
[AS-98276-001-001.pdf](#)  
[PK-98276-001-001.pdf](#)

## Product Environment Compliance

### Compliance

GADSL/IMDS	Compliant
China RoHS	Not Relevant
EU ELV	Compliant per 2000/53/EC
Low-Halogen Status	Not Relevant
REACH SVHC	Not Contained per D(2024)4144-DC (27 June 2024)
EU RoHS	Compliant per EU 2015/863

### Multiple Part Product Compliance Statements

- Eu RoHS
- REACH SVHC
- Low-Halogen

### Multiple Part Industry Compliance Documents

- IPC 1752A Class C
- IPC 1752A Class D

- Molex Product Compliance Declaration
- IEC-62474
- chemSHERPA (xml)

## EU RoHS Certificate of Compliance

---

### Part Details

#### General

Status	Active
Category	Connector Housings
Series	98276
Description	3.33mm / 6.00mm Pitch Hybrid Male Inline Housing, Dual Row, 16 Circuits, Black
Application	Power, Wire-to-Wire
Comments	For current designation please refer to FCI Sicma terminal specification for 1.50 and 2.80mm terminals.
Product Family	NSCC - New Standard Casing Contact
Product Name	NSCC
UPC	756054713419

#### Physical

Circuits Detail	4x2.8mm 12x1.5mm male terminals
Circuits (maximum)	16
Color - Resin	Black, Natural
Gender	Plug
Glow-Wire Capable	No
Lock to Mating Part	Yes
Material - Resin	Polyester, Polyester Alloy
Net Weight	12.361/g
Number of Rows	2
Packaging Type	Bag
Panel Mount	No
Pitch - Mating Interface	3.33mm, 6.00mm
Polarized to Mating Part	Yes

Ports	1
Stackable	No
Temperature Range - Operating	-40° to +85°C

Solder Process Data

Lead-Free Process Capability	N/A
------------------------------	-----

---

Mates With / Use With

Mates with Part(s)

Description	Part Number
3.33mm / 6.00mm Pitch Hybrid Inline Female Housing, Right Slide Orientation, Dual Row, 16 Circuits, Black	<u>982731001</u>

Use with Part(s)

Description	Part Number
Use With	1.5 and 2.8mm FCI Sicma Male Terminals