

# QPD W 4PE6,0 M25 1,0 GY - Panel feed-through



1410404

<https://www.phoenixcontact.com/us/products/1410404>

Please be informed that the data shown in this PDF document is generated from our online catalog. Please find the complete data in the user documentation. Our general terms of use for downloads are valid.



Panel feed-through, product family: QPD, connection method: Single wires (Welded-on), number of positions: 4+PE, M25, Pin, 2.5 mm<sup>2</sup> ... 6 mm<sup>2</sup>, 690 V, 40 A, PA, gray, without QUICKON nut, coding: coded, 6 mm<sup>2</sup>, wires cut flat at the end, cable length: 1 m

## Your advantages

- Innovative and time saving - QUICKON fast connection for time saving of up to 80 % for on-site connection
- Robust throughout: housing with IP68/IP69K and IK07 protection for a wide range of applications
- Safer connection with mechanical coding to protect against mismatching, and touch-proof protection in accordance with DIN EN 0105
- Efficient - by using panel feed-throughs, devices no longer need to be opened in order to connect cables

## Commercial data

Item number	1410404
Packing unit	1 pc
Minimum order quantity	1 pc
Product key	BF6ACC
Catalog page	Page 193 (NTK-2014)
GTIN	4046356929462
Weight per piece (including packing)	22.22 g
Weight per piece (excluding packing)	22.22 g
Country of origin	PL

# QPD W 4PE6,0 M25 1,0 GY - Panel feed-through



1410404

<https://www.phoenixcontact.com/us/products/1410404>

## Technical data

### Product properties

Product type	Panel feed-through
Product family	QPD
Type	QPD 5x6,0
Number of positions	5
Connection profile	4+PE
Position marking	1, 2, L, N, PE
Number of connections	10
Number of connections per position	1
Coding	coded

### Insulation characteristics

Overvoltage category	III
Degree of pollution	3

### Connection data

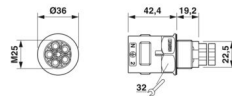
#### Connection technology

Connection method On the device side	Single wires (Welded-on)
Frequency of connections between conductors of the same cross section	max. 10

#### Conductor connection

Conductor cross section flexibel	2.5 mm <sup>2</sup> ... 6 mm <sup>2</sup>
Conductor cross section solid	2.5 mm <sup>2</sup> ... 6 mm <sup>2</sup>
Connection cross section AWG	14 ... 10
Tightening torque Union nut	15 Nm
Wrench size Union nut	30 mm

### Dimensions

Dimensional drawing	
Width	36 mm
Height	36 mm
Length	61.6 mm
Diameter	36 mm
Wrench size	30 mm
Wrench size for mounting	30 mm

### Electrical properties

Rated surge voltage (II/2)	8 kV
----------------------------	------

# QPD W 4PE6,0 M25 1,0 GY - Panel feed-through



1410404

<https://www.phoenixcontact.com/us/products/1410404>

Rated surge voltage (III/2)	8 kV
Rated surge voltage (III/3)	6 kV
Rated current	40 A
Contact resistance	< 3 mΩ
rated voltage (II/2)	1000 V
rated voltage (III/2)	1000 V
Rated voltage (III/3)	690 V
Nominal voltage $U_N$	690 V
Nominal current $I_N$	40 A

## Material specifications

Material Housing	PA
Material Contact	Cu
Material Contact surface	Silver-plated
Flammability rating according to UL 94	V0
Material wire insulation	PVC/PE/TPE/rubber

## Cable/line

Cable length	1 m
Structure of individual litz in acc. with VDE 0295 / smallest wire diameter	VDE 0295 class 1 to 6/min. 0.15 mm
Wire diameter including insulation	2.95 mm ... 5 mm
Position marking	1, 2, L, N, PE
Single wire, color	black, brown, gray, blue, green/yellow
Cable cross section	6 mm <sup>2</sup>
Material wire insulation	PVC/PE/TPE/rubber

## Mounting

Mounting type	Front mounting M25
---------------	--------------------

## Environmental and real-life conditions

### Ambient conditions

Degree of protection	IP66
	IP68 (2 m / 24 h)
	IP69K
Ambient temperature (operation)	-40 °C ... 100 °C
Temperature when conductor connected	-5 °C ... 50 °C
Ambient temperature (storage/transport)	-40 °C ... 100 °C

# QPD W 4PE6,0 M25 1,0 GY - Panel feed-through

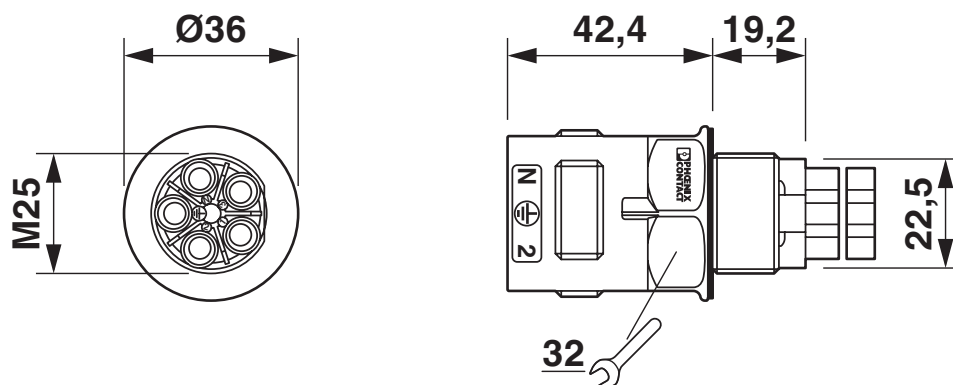


1410404

<https://www.phoenixcontact.com/us/products/1410404>

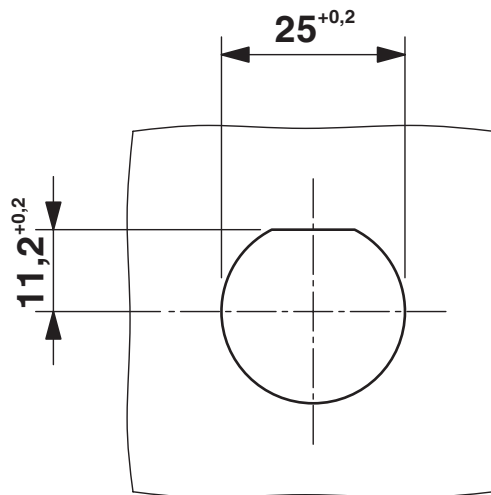
## Drawings

Dimensional drawing

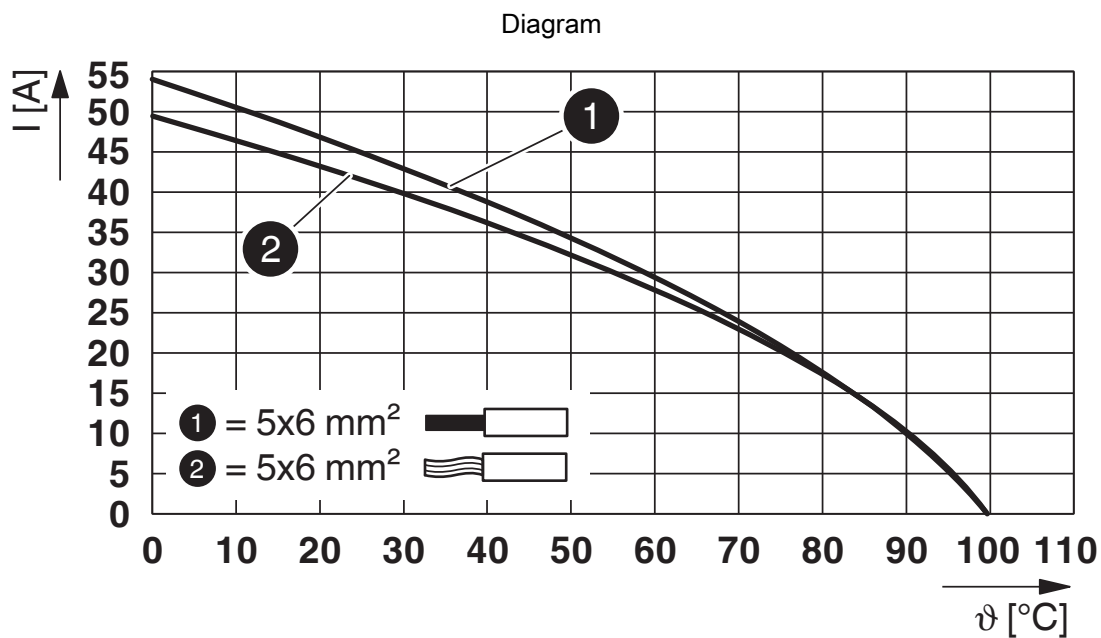


Dimensional drawing of QPD W 4PE6,0 M25

Dimensional drawing



Panel cutout



Derating diagram

# QPD W 4PE6,0 M25 1,0 GY - Panel feed-through



1410404

<https://www.phoenixcontact.com/us/products/1410404>

## Classifications

### ECLASS

ECLASS-11.0	27440602
ECLASS-13.0	27440602

# QPD W 4PE6,0 M25 1,0 GY - Panel feed-through



1410404

<https://www.phoenixcontact.com/us/products/1410404>

## Environmental product compliance

EU REACH SVHC

REACH candidate substance (CAS No.)	No substance above 0.1 wt%
-------------------------------------	----------------------------

# QPD W 4PE6,0 M25 1,0 GY - Panel feed-through



1410404

<https://www.phoenixcontact.com/us/products/1410404>

## Accessories

### CP-QPD 5X6,0 - Coding profile

1411402

<https://www.phoenixcontact.com/us/products/1411402>



Coding profile, red, for insertion into the 5-pos. QUICKON dome and connector, can be positioned in 72° increments.

---

### QPD QSK 5X6,0 - Protective cap

1411403

<https://www.phoenixcontact.com/us/products/1411403>



Protective cap, black plastic, for 5 x 2.5 mm<sup>2</sup> QPD connector, IP50.



# QPD W 4PE6,0 M25 1,0 GY - Panel feed-through



1410404

<https://www.phoenixcontact.com/us/products/1410404>

## QPD QSK GY 5X6,0 FS - Protective cap

1411401

<https://www.phoenixcontact.com/us/products/1411401>

Protective cap, plastic, for QUICKON connection, gray, with retaining cord, IP68



---

## Q-MU M25 - Nut

1640715

<https://www.phoenixcontact.com/us/products/1640715>

Nut (plastic) to lock the contact carrier from the inside of the device



---

Phoenix Contact 2024 © - all rights reserved  
<https://www.phoenixcontact.com>

Phoenix Contact USA  
586 Fulling Mill Road  
Middletown, PA 17057, United States  
(+717) 944-1300  
[info@phoenixcon.com](mailto:info@phoenixcon.com)