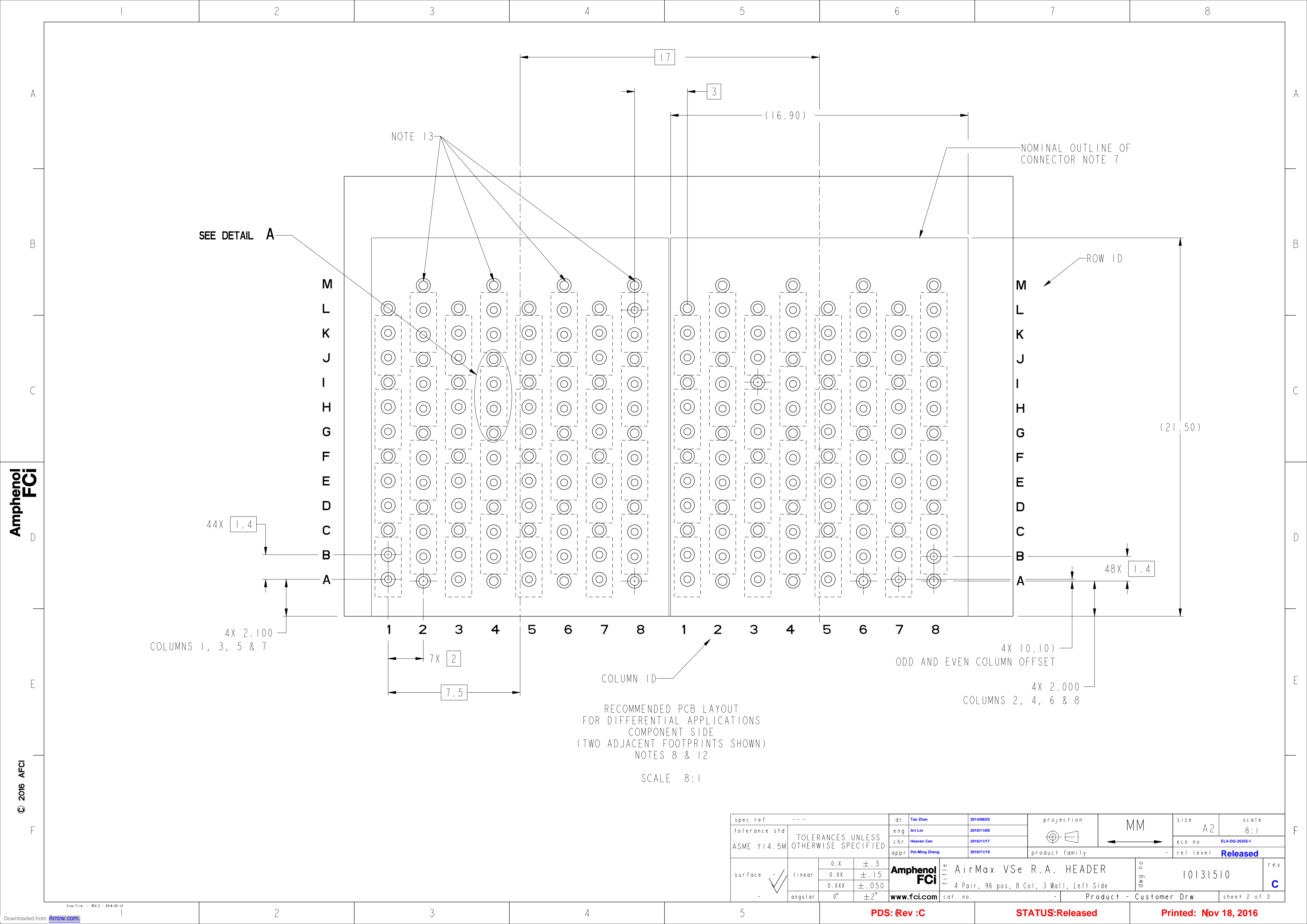


spec ref ---				dr Tao Zhan		2014/08/29		projection		MM		size A2		scale 10:1			
tolerance std				eng Art Lin		2016/11/09						ecn no		ELX-DG-25255-1			
ASME Y14.5M				chr Heaven Cen		2016/11/17						rel level		Released			
				appr Pei-Ming Zheng		2016/11/18						product family		-			
surface - ✓		linear		0.X		±.3		Amphenol FCI		title AirMax VSe R.A. HEADER		dwg no 10131510		rev C			
				0.XX		±.15											
				0.XXX		±.050											
		- ✓		angular		0°		±2°		www.fci.com		cat. no.		-		Product - Customer Drw	

PDS: Rev :C

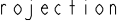

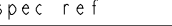

STATUS:Released

Printed: Nov 18, 2016



Amphenol
FCI


© 2016 APCI

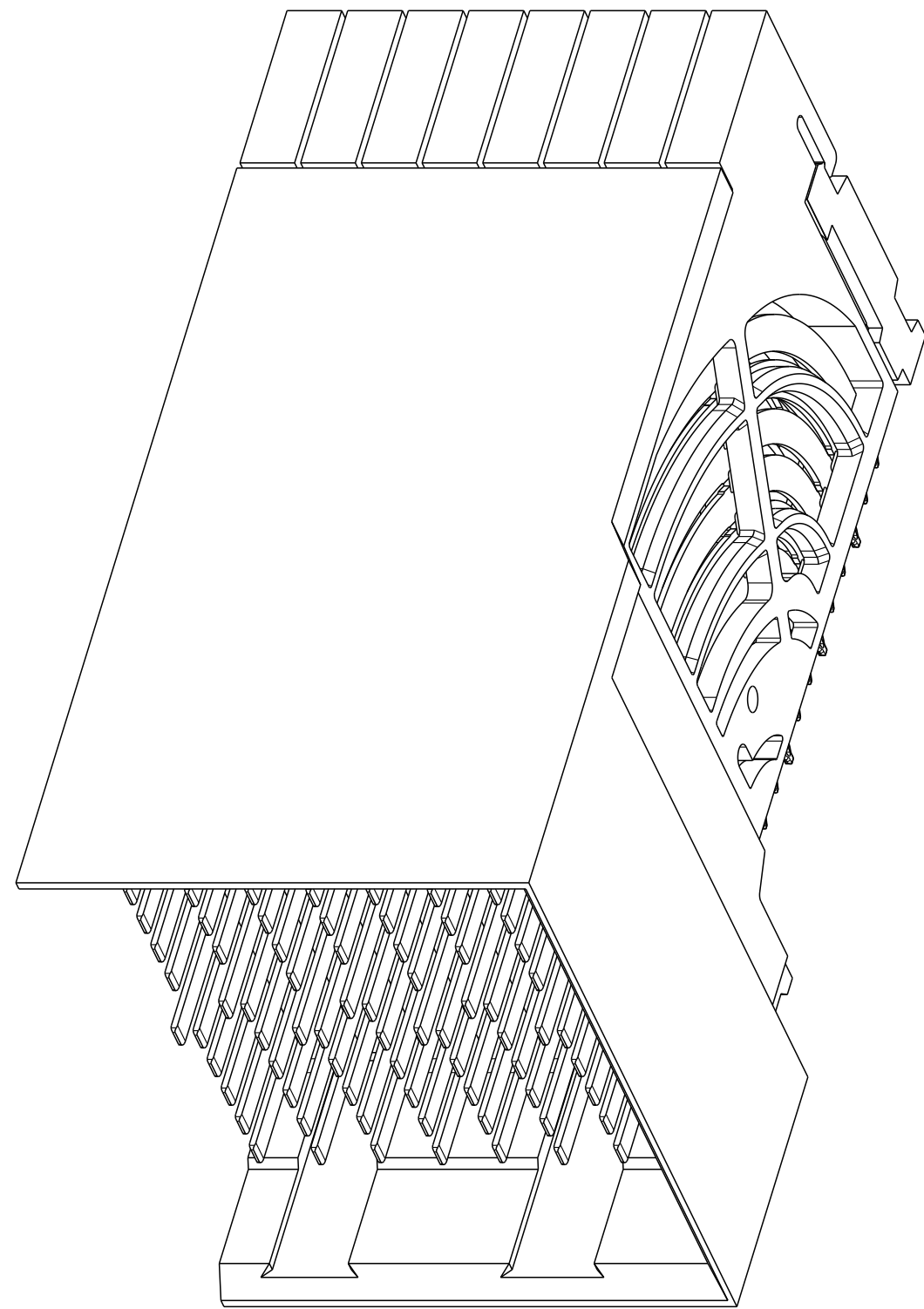
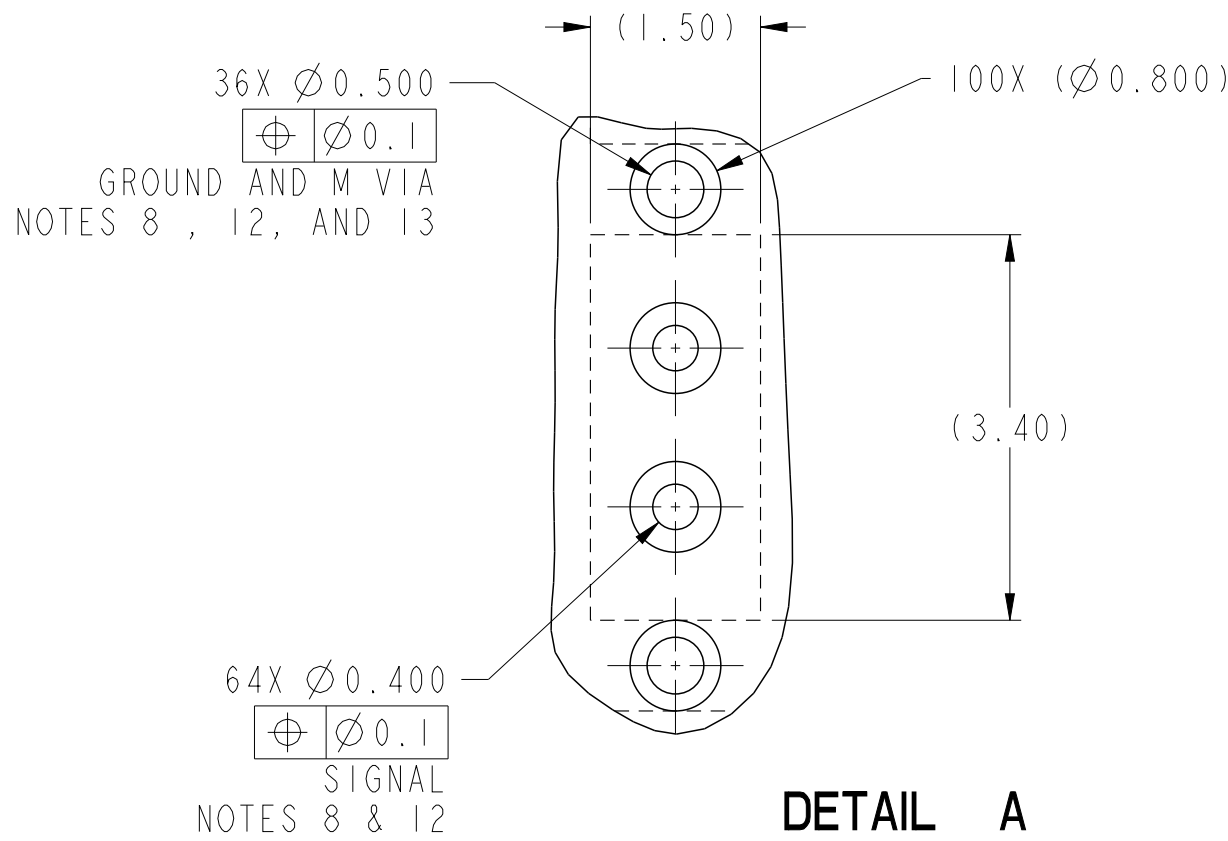
spec ref ---			dr Tao Zhan		2014/08/29				size A2		scale 8:1			
tolerance std			eng Art Lin		2016/11/09				ecn no ELX-DG-25255-1		rel level Released			
ASME Y14.5M			TOLERANCES UNLESS OTHERWISE SPECIFIED		chr Heaven Cen				2016/11/17					
			appr Pei-Ming Zheng		2016/11/18				product family -					
			linear		0.X ±.3 0.XX ±.15 0.XXX ±.050				title AirMax VSe R.A. HEADER 4 Pair, 96 pos, 8 Col, 3 Wall, Left Side		dwg no 10131510		rev C	
-			angular		0° ±2°		www.fci.com		cat. no. -		Product - Customer Drw		sheet 2 of 3	

PDS: Rev :C

STATUS:Released

Printed: Nov 18, 2016

- 1 - CONNECTOR MATERIALS:
HOUSING: LCP, 20% MINIMUM GLASS, NATURAL, UL94-V0
IMLA PLASTIC: HIGH TEMP THERMOPLASTIC, BLACK, UL94-V0
CONTACT: COPPER ALLOY
ORGANIZER: HIGH TEMP THERMOPLASTIC, NATURAL, UL94-V0
- 2 - CONTACT PLATING:
SEPARABLE INTERFACE:
PERFORMANCE-BASED PLATING, QUALIFIED TO MEET THE
REQUIREMENTS OF FCI PRODUCT SPECIFICATION GS-12-0956
INCLUDING TELCORDIA GR-1217-CORE (NOVEMBER 1995)
CENTRAL OFFICE TEST SEQUENCE
- PRESS-FIT TAILS: SEE TABLE
- 3 - PRODUCT SPECIFICATION: GS-12-0956
- 4 - APPLICATION SPECIFICATION: GS-20-0305
- 5 - PRODUCT MARKING, (PROTOTYPE, PART NUMBER & LOT CODE), ON THIS SURFACE.
- 6 - POSITIONS "F" OF ODD NUMBERED COLUMNS
AND POSITIONS "G" OF EVEN NUMBERED COLUMNS
CORRESPOND TO EARLY MATE HEADER PINS.
- 7 - CONNECTOR OUTLINE MAY BE SCREEN PRINTED ONTO CUSTOMER PCB TO
BE USED AS A GUIDE FOR CONNECTOR PLACEMENT.
- 8 - REFER TO CUSTOMER DRAWING 10104444 FOR INFORMATION
ON PCB HOLE DIAMETERS AND PLATING OPTIONS
- 9 - LEAD FREE PRODUCT MEETS THE EUROPEAN UNION DIRECTIVES &
OTHER COUNTRY REGULATIONS AS DESCRIBED IN GS-22-008
- 10 - A  SYMBOL WILL BE NEXT TO ANY DIMENSION,
VIEW, OR NOTE THAT HAS BEEN MODIFIED WITH THE
CURRENT DRAWING REVISION.
- 11 - PACKAGING MEETS GS-14-920 LEAD FREE LABELING
SPECIFICATION.
- 12 - GROUND CONTACTS (C, F, I & L IN ODD COLUMNS AND
A, D, G & J IN EVEN COLUMNS) REQUIRE (Ø0.500) FINISHED HOLES.
SIGNAL LOCATIONS REQUIRE (Ø0.400) FINISHED HOLES
- 13 - THESE OUTER VIAS (M) ARE OPTIONAL. WHILE NO CONNECTOR EONS ARE
PRESSED INTO THESE HOLES WE RECOMMEND (Ø0.500) FINISHED HOLES
AT THESE LOCATIONS TO PROVIDE GROUND SYMMETRY THROUGH THE PCB.



10131510-101LF

spec ref	---	dr	Tao Zhan	2014/08/29	projection	MM	size	A2	scale	10:1
tolerance std	ASME Y14.5M	eng	Art Lin	2016/11/09	chr	Heaven Cen	ecn no	ELX-DG-25255-1		
		appr	Pei-Ming Zheng	2016/11/18	product family	-	rel level	Released		
surface	✓	linear	0.X	±.3	Amphenol FCi	title	AirMax VSe R.A. HEADER	dwg no	10131510	rev
			0.XX	±.15	www.fci.com	cat. no.	4 Pair, 96 pos, 8 Col, 3 Wall, Left Side			C
			0.XXX	±.050						
		angular	0°	±2°						
			Product - Customer Drw			sheet 3 of 3				