

# VIP-PA/20XOE/1,0M/FB3000 - Front adapter



1360225

<https://www.phoenixcontact.com/us/products/1360225>

Please be informed that the data shown in this PDF document is generated from our online catalog. Please find the complete data in the user documentation. Our general terms of use for downloads are valid.



VIP power cabling, universal front adapter with assembled shielded round cable for connection to 20-pos. Emerson FB3000 3MSG12 I/O modules. 1 x 20 single wires (each ferruled and marked) can be connected (field connection, e.g., via 20 terminal blocks).

## Commercial data

Item number	1360225
Packing unit	1 pc
Minimum order quantity	1 pc
Note	Made to order (non-returnable)
Sales key	C423
Product key	CK2BNK
GTIN	4063151689995
Weight per piece (excluding packing)	177.6 g
Customs tariff number	85444290
Country of origin	MX

## Technical data

### Product properties

Product type	Front adapter
Data management status	
Article revision	01
Insulation characteristics	
Overvoltage category	II
Pollution degree	2

### Electrical properties

Max. permissible operating voltage	31 V DC
Max. permissible current	0.5 A (per path)

### Connection data

Controller level	
Connection method	Plug-in connection
Note	Can be plugged onto 12-ch. "3MSG12" I/O modules
Field level	
Connection method	Single wires
Number of connections	20
Number of positions	1
Note	The wires are marked and fitted with ferrules

### Dimensions

Cable	
Length	1 m

### Cable/line

Number of positions	20
Shielded	yes
Conductor type	Assembled shielded round cable
AWG signal line	22
Conductor cross section	20x
Outer sheath, material	PVC
External sheath, color	gray
Conductor material	Tin-plated Cu litz wires
Halogen-free	no

### Environmental and real-life conditions

Ambient conditions	
--------------------	--

# VIP-PA/20XOE/1,0M/FB3000 - Front adapter



1360225

<https://www.phoenixcontact.com/us/products/1360225>

Degree of protection (IP20)	IP20
Ambient temperature (operation)	-40 °C ... 75 °C
Ambient temperature (storage/transport)	-40 °C ... 80 °C
Altitude	≤ 2000 m (above sea level)
Permissible humidity (operation)	≤ 0 % ... 95 % (non-condensing)
Permissible humidity (storage/transport)	≤ 95 % (non-condensing)

## Approvals

### ATEX

Identification	Ⓔ II 3G Ex ec IIC T6 Gc
Certificate	UL 22ATEX2930X

### UKEX

Identification	Ⓔ II 3G Ex ec IIC T6 Gc
Certificate	UL 22UKEX2748X

### UL, USA/Canada

Identification	Class I, Div. 2, Groups A, B, C, D T6
	Class I, Zone 2, IIC T6

## Notes

Notes on operation	For proper use, the specifications of the installation directive (see Downloads) must be observed. For applications or use with third-party products, the specifications, and the safety and warning instructions of the respective third-party manufacturer must also be met.
--------------------	--

# VIP-PA/20XOE/1,0M/FB3000 - Front adapter



1360225

<https://www.phoenixcontact.com/us/products/1360225>

## Approvals

To download certificates, visit the product detail page: <https://www.phoenixcontact.com/us/products/1360225>



**cUL Recognized**

Approval ID: CoC E196811-20230227



**UL Recognized**

Approval ID: UL CoC



**ATEX**

Approval ID: UL22ATEX2930X



**UKCA-EX**

Approval ID: UL22UKEX2748X

**cULus Recognized**

# VIP-PA/20XOE/1,0M/FB3000 - Front adapter



1360225

<https://www.phoenixcontact.com/us/products/1360225>

## Classifications

### ECLASS

ECLASS-11.0	27242292
ECLASS-12.0	27242292
ECLASS-13.0	27242292

### ETIM

ETIM 9.0	EC002584
----------	----------

1360225

<https://www.phoenixcontact.com/us/products/1360225>

Environmental product compliance

EU RoHS	
Fulfills EU RoHS substance requirements	Yes, No exemptions
China RoHS	
Environment friendly use period (EFUP)	EFUP-E
	No hazardous substances above the limits
EU REACH SVHC	
REACH candidate substance (CAS No.)	No substance above 0.1 wt%

1360225

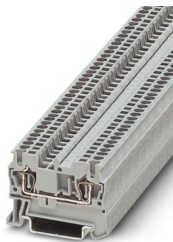
<https://www.phoenixcontact.com/us/products/1360225>

## Accessories

### ST 1,5 - Feed-through terminal block

3031076

<https://www.phoenixcontact.com/us/products/3031076>



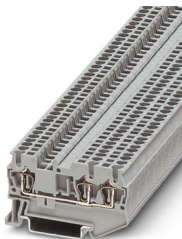
Feed-through terminal block, nom. voltage: 500 V, nominal current: 17.5 A, number of connections: 2, connection method: Spring-cage connection, 1 level, Rated cross section: 1.5 mm<sup>2</sup>, cross section: 0.08 mm<sup>2</sup> - 1.5 mm<sup>2</sup>, mounting type: NS 35/7,5, NS 35/15, color: gray

---

### ST 1,5-TWIN - Feed-through terminal block

3031128

<https://www.phoenixcontact.com/us/products/3031128>



Feed-through terminal block, nom. voltage: 500 V, nominal current: 17.5 A, number of connections: 3, connection method: Spring-cage connection, Rated cross section: 1.5 mm<sup>2</sup>, cross section: 0.08 mm<sup>2</sup> - 1.5 mm<sup>2</sup>, mounting type: NS 35/7,5, NS 35/15, color: gray

# VIP-PA/20XOE/1,0M/FB3000 - Front adapter



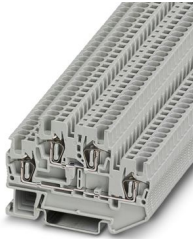
1360225

<https://www.phoenixcontact.com/us/products/1360225>

## STTB 1,5 - Double-level spring-cage terminal block

3031157

<https://www.phoenixcontact.com/us/products/3031157>



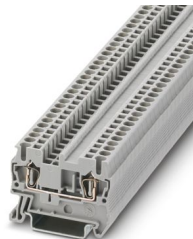
Double-level spring-cage terminal block, nom. voltage: 500 V, nominal current: 17.5 A, connection method: Spring-cage connection, 1st and 2nd level, Rated cross section: 1.5 mm<sup>2</sup>, cross section: 0.08 mm<sup>2</sup> - 1.5 mm<sup>2</sup>, mounting type: NS 35/7,5, NS 35/15, color: gray

---

## ST 2,5 - Feed-through terminal block

3031212

<https://www.phoenixcontact.com/us/products/3031212>



Feed-through terminal block, nom. voltage: 800 V, nominal current: 24 A, number of connections: 2, connection method: Spring-cage connection, Rated cross section: 2.5 mm<sup>2</sup>, cross section: 0.08 mm<sup>2</sup> - 4 mm<sup>2</sup>, mounting type: NS 35/7,5, NS 35/15, color: gray



# VIP-PA/20XOE/1,0M/FB3000 - Front adapter



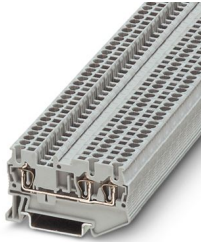
1360225

<https://www.phoenixcontact.com/us/products/1360225>

## ST 2,5-TWIN - Feed-through terminal block

3031241

<https://www.phoenixcontact.com/us/products/3031241>



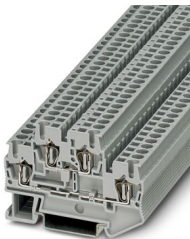
Feed-through terminal block, nom. voltage: 800 V, nominal current: 24 A, number of connections: 3, connection method: Spring-cage connection, Rated cross section: 2.5 mm<sup>2</sup>, cross section: 0.08 mm<sup>2</sup> - 4 mm<sup>2</sup>, mounting type: NS 35/7,5, NS 35/15, color: gray

---

## STTB 2,5 - Double-level spring-cage terminal block

3031270

<https://www.phoenixcontact.com/us/products/3031270>



Double-level spring-cage terminal block, nom. voltage: 500 V, nominal current: 22 A, connection method: Spring-cage connection, Rated cross section: 2.5 mm<sup>2</sup>, cross section: 0.08 mm<sup>2</sup> - 4 mm<sup>2</sup>, mounting type: NS 35/7,5, NS 35/15, color: gray

# VIP-PA/20XOE/1,0M/FB3000 - Front adapter



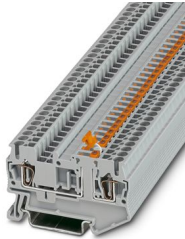
1360225

<https://www.phoenixcontact.com/us/products/1360225>

## ST 2,5-MT - Knife-disconnect terminal block

3036343

<https://www.phoenixcontact.com/us/products/3036343>



Knife-disconnect terminal block, nom. voltage: 400 V, nominal current: 20 A, 1 level, connection method: Spring-cage connection, Rated cross section: 2.5 mm<sup>2</sup>, cross section: 0.08 mm<sup>2</sup> - 4 mm<sup>2</sup>, mounting: NS 35/7,5, NS 35/15, color: gray

---

## UT 2,5 - Feed-through terminal block

3044076

<https://www.phoenixcontact.com/us/products/3044076>



Feed-through terminal block, nom. voltage: 1000 V, nominal current: 24 A, number of connections: 2, connection method: Screw connection, Rated cross section: 2.5 mm<sup>2</sup>, cross section: 0.14 mm<sup>2</sup> - 4 mm<sup>2</sup>, mounting type: NS 35/7,5, NS 35/15, color: gray

# VIP-PA/20XOE/1,0M/FB3000 - Front adapter



1360225

<https://www.phoenixcontact.com/us/products/1360225>

## UT 2,5-TWIN - Feed-through terminal block

3044513

<https://www.phoenixcontact.com/us/products/3044513>



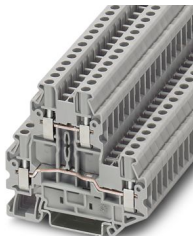
Feed-through terminal block, nom. voltage: 500 V, nominal current: 24 A, number of connections: 3, connection method: Screw connection, 1 level, Rated cross section: 2.5 mm<sup>2</sup>, cross section: 0.14 mm<sup>2</sup> - 4 mm<sup>2</sup>, mounting type: NS 35/7,5, NS 35/15, color: gray

---

## UTTB 2,5 - Double-level terminal block

3044636

<https://www.phoenixcontact.com/us/products/3044636>



Double-level terminal block, nom. voltage: 500 V, nominal current: 24 A, connection method: Screw connection, Rated cross section: 2.5 mm<sup>2</sup>, cross section: 0.14 mm<sup>2</sup> - 4 mm<sup>2</sup>, mounting type: NS 35/7,5, NS 35/15, color: gray

# VIP-PA/20XOE/1,0M/FB3000 - Front adapter



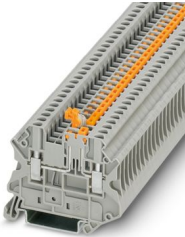
1360225

<https://www.phoenixcontact.com/us/products/1360225>

## UT 2,5-MT - Knife-disconnect terminal block

3046362

<https://www.phoenixcontact.com/us/products/3046362>



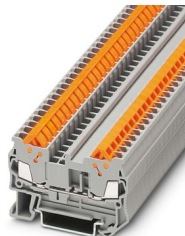
Knife-disconnect terminal block, nom. voltage: 400 V, nominal current: 20 A, Thermal continuous current  $I_{th}$ : 20 A, connection method: Screw connection, Rated cross section: 2.5 mm<sup>2</sup>, cross section: 0.14 mm<sup>2</sup> - 4 mm<sup>2</sup>, mounting: NS 35/7,5, NS 35/15, color: gray

---

## QTC 1,5 - Feed-through terminal block

3205019

<https://www.phoenixcontact.com/us/products/3205019>



Feed-through terminal block, nom. voltage: 800 V, nominal current: 17.5 A, number of connections: 2, connection method: Quick connection, 1 level, Rated cross section: 1.5 mm<sup>2</sup>, cross section: 0.25 mm<sup>2</sup> - 1.5 mm<sup>2</sup>, mounting type: NS 35/7,5, NS 35/15, color: gray

# VIP-PA/20XOE/1,0M/FB3000 - Front adapter



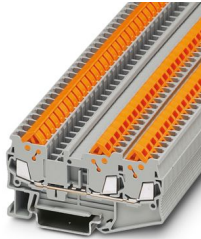
1360225

<https://www.phoenixcontact.com/us/products/1360225>

## QTC 1,5-TWIN - Feed-through terminal block

3205048

<https://www.phoenixcontact.com/us/products/3205048>



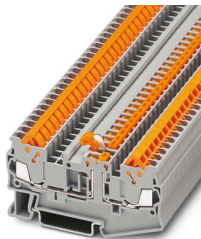
Feed-through terminal block, nom. voltage: 800 V, nominal current: 17.5 A, number of connections: 3, connection method: Quick connection, 1 level, Rated cross section: 1.5 mm<sup>2</sup>, cross section: 0.25 mm<sup>2</sup> - 1.5 mm<sup>2</sup>, mounting type: NS 35/7,5, NS 35/7,5, color: gray

---

## QTC 1,5-MT - Knife-disconnect terminal block

3205103

<https://www.phoenixcontact.com/us/products/3205103>



Knife-disconnect terminal block, nom. voltage: 400 V, nominal current: 17.5 A, 1 level, connection method: Quick connection, Rated cross section: 1.5 mm<sup>2</sup>, cross section: 0.25 mm<sup>2</sup> - 1.5 mm<sup>2</sup>, mounting: NS 35/7,5, NS 35/15, color: gray

# VIP-PA/20XOE/1,0M/FB3000 - Front adapter



1360225

<https://www.phoenixcontact.com/us/products/1360225>

## QTTCB 1,5 - Double-level terminal block

3205116

<https://www.phoenixcontact.com/us/products/3205116>



Double-level terminal block, nom. voltage: 500 V, nominal current: 17.5 A, connection method: Quick connection, 1st and 2nd level, Rated cross section: 1.5 mm<sup>2</sup>, cross section: 0.25 mm<sup>2</sup> - 1.5 mm<sup>2</sup>, mounting type: NS 35/7,5, NS 35/15, color: gray

---

## QTC 2,5 - Feed-through terminal block

3206416

<https://www.phoenixcontact.com/us/products/3206416>



Feed-through terminal block, nom. voltage: 800 V, nominal current: 24 A, number of connections: 2, connection method: Quick connection, 1 level, Rated cross section: 2.5 mm<sup>2</sup>, cross section: 0.5 mm<sup>2</sup> - 2.5 mm<sup>2</sup>, mounting type: NS 35/7,5, NS 35/15, color: gray

# VIP-PA/20XOE/1,0M/FB3000 - Front adapter



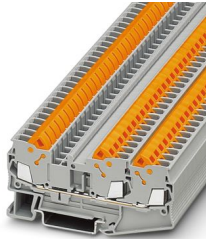
1360225

<https://www.phoenixcontact.com/us/products/1360225>

## QTC 2,5-TWIN - Feed-through terminal block

3206445

<https://www.phoenixcontact.com/us/products/3206445>



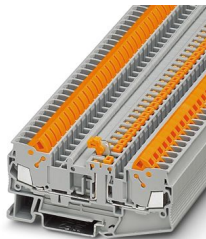
Feed-through terminal block, nom. voltage: 800 V, nominal current: 24 A, number of connections: 3, connection method: Quick connection, 1 level, Rated cross section: 2.5 mm<sup>2</sup>, cross section: 0.5 mm<sup>2</sup> - 2.5 mm<sup>2</sup>, mounting type: NS 35/7,5, NS 35/7,5, color: gray

---

## QTC 2,5-MT - Knife-disconnect terminal block

3206487

<https://www.phoenixcontact.com/us/products/3206487>



Knife-disconnect terminal block, nom. voltage: 400 V, nominal current: 20 A, 1 level, connection method: Quick connection, Rated cross section: 2.5 mm<sup>2</sup>, cross section: 0.5 mm<sup>2</sup> - 2.5 mm<sup>2</sup>, mounting: NS 35/7,5, NS 35/15, color: gray

# VIP-PA/20XOE/1,0M/FB3000 - Front adapter



1360225

<https://www.phoenixcontact.com/us/products/1360225>

## PT 1,5/S - Feed-through terminal block

3208100

<https://www.phoenixcontact.com/us/products/3208100>



Feed-through terminal block, nom. voltage: 500 V, nominal current: 17.5 A, number of connections: 2, connection method: Push-in connection, 1 level, Rated cross section: 1.5 mm<sup>2</sup>, cross section: 0.14 mm<sup>2</sup> - 1.5 mm<sup>2</sup>, mounting type: NS 35/7,5, NS 35/15, color: gray

---

## PT 1,5/S-TWIN - Feed-through terminal block

3208155

<https://www.phoenixcontact.com/us/products/3208155>



Feed-through terminal block, nom. voltage: 500 V, nominal current: 17.5 A, number of connections: 3, connection method: Push-in connection, 1 level, Rated cross section: 1.5 mm<sup>2</sup>, cross section: 0.14 mm<sup>2</sup> - 1.5 mm<sup>2</sup>, mounting type: NS 35/7,5, NS 35/15, color: gray



# VIP-PA/20XOE/1,0M/FB3000 - Front adapter



1360225

<https://www.phoenixcontact.com/us/products/1360225>

## PTTB 1,5/S - Double-level terminal block

3208511

<https://www.phoenixcontact.com/us/products/3208511>



Double-level terminal block, nom. voltage: 500 V, nominal current: 16 A, connection method: Push-in connection, 1st and 2nd level, Rated cross section: 1.5 mm<sup>2</sup>, cross section: 0.14 mm<sup>2</sup> - 1.5 mm<sup>2</sup>, mounting type: NS 35/7,5, NS 35/15, color: gray

---

## PT 2,5 - Feed-through terminal block

3209510

<https://www.phoenixcontact.com/us/products/3209510>



Feed-through terminal block, nom. voltage: 800 V, nominal current: 24 A, number of connections: 2, number of positions: 1, connection method: Push-in connection, Rated cross section: 2.5 mm<sup>2</sup>, cross section: 0.14 mm<sup>2</sup> - 4 mm<sup>2</sup>, mounting type: NS 35/7,5, NS 35/15, color: gray

# VIP-PA/20XOE/1,0M/FB3000 - Front adapter



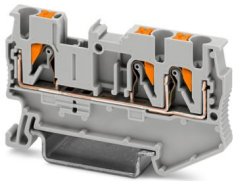
1360225

<https://www.phoenixcontact.com/us/products/1360225>

## PT 2,5-TWIN - Feed-through terminal block

3209549

<https://www.phoenixcontact.com/us/products/3209549>



Feed-through terminal block, nom. voltage: 800 V, nominal current: 24 A, number of connections: 3, connection method: Push-in connection, Rated cross section: 2.5 mm<sup>2</sup>, cross section: 0.14 mm<sup>2</sup> - 4 mm<sup>2</sup>, mounting type: NS 35/7,5, NS 35/15, color: gray

---

## PT 2,5-MT - Knife-disconnect terminal block

3210156

<https://www.phoenixcontact.com/us/products/3210156>



Knife-disconnect terminal block, nom. voltage: 400 V, nominal current: 20 A, connection method: Push-in connection, Rated cross section: 2.5 mm<sup>2</sup>, cross section: 0.14 mm<sup>2</sup> - 4 mm<sup>2</sup>, mounting: NS 35/7,5, NS 35/15, color: gray

# VIP-PA/20XOE/1,0M/FB3000 - Front adapter



1360225

<https://www.phoenixcontact.com/us/products/1360225>

## PTTB 2,5 - Double-level terminal block

3210567

<https://www.phoenixcontact.com/us/products/3210567>



Double-level terminal block, nom. voltage: 500 V, nominal current: 22 A, connection method: Push-in connection, 1st and 2nd level, Rated cross section: 2.5 mm<sup>2</sup>, cross section: 0.14 mm<sup>2</sup> - 4 mm<sup>2</sup>, mounting type: NS 35/7,5, NS 35/15, color: gray

---

Phoenix Contact 2024 © - all rights reserved

<https://www.phoenixcontact.com>

Phoenix Contact USA  
586 Fulling Mill Road  
Middletown, PA 17057, United States  
(+717) 944-1300  
[info@phoenixcon.com](mailto:info@phoenixcon.com)