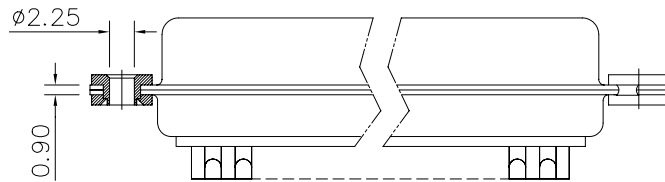
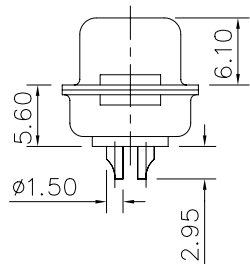
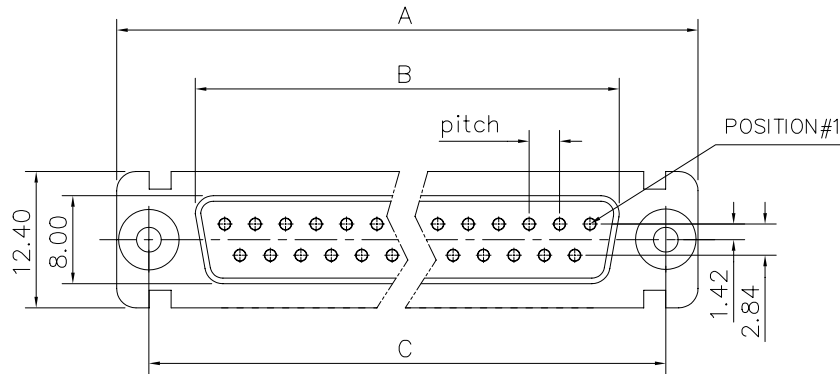


This document is the property of Amphenol Corporation and is delivered on the express condition that it is not to be disclosed, reproduced or used, in whole or in part, for manufacture or sale by anyone other than Amphenol Corporation without its prior consent, & that no right is granted to disclose or to use any information in this document.



Customer drawing

DIM.S SHELL	A	B	C	Pitch
9	30.70	16.40	25.00	2.74
15	39.00	24.80	33.30	2.74
25	52.90	38.50	47.00	2.77
37	69.20	54.90	63.50	2.77

REVISIONS				
SYM	ECN	DESCRIPTION	DATE	APPROVED
1			02/22/08	

D-SUB TECHNICAL DATA

SHELL : Steel 2.5um(100u") min tin over 1.25um(50u") min nickel
BODY : Glass filled thermoplastic.
Flame retardant to UL94 V-0 Color Black
CONTACTS : Copper alloy
0.4um(15u") min gold over 1.25um(50u") min nickel
FLOAT NUT : Brass ,100u" min tin over 50u" nickel
ELECTRICAL : Voltage rating :300 V RMS at 50 Hz
Current rating 7.5A.
Insulation resistance >5000 M Ohms
Contact resistance 20 mOhms max.
CLIMATIC : Temperature range -55 °C up to 85°C
Damp heat 21 days(40 °C-95% HR)
MACHANICAL : Mating force 0.34kg Max
Unmating force 0.021kg min
MARKING : Amphenol-...(Series No.)
Commercial reference
Manufacturing date

PRODUCT CODE

L 77DF X F XX S

L: RoHS Compliance

Contact type:
S: Socket

77DF: tinned shell
for receptacle

Configuration: 09,15,25,37

Shell Size :E,A,B,C

F=Float mounting

UNLESS OTHERWISE SPECIFIED TOLERANCES		APPROVAL	DATE	Amphenol®	
	U.S. METRIC	DRAWN	Christine.cui 02/22/08		
.X +/-	0.50	CHECKED	lik.wang 02/22/08		
.XX +/-	0.30	CHECKED			
.XXX +/-	0.20			TITLE	
FRACTIONS +/-				machined contacts connector, DF series	
ANGLES +/-	5°			SIZE DRAWING NO. REV.	
FOR MATERIALS AND FINISHES SEE NOTES		DRAWING FILE :		A4 C L77DFXFXXS 1	
REMOVE SHARP EDGES		ANGLE OF PROJECTION		SCALE NONE SHEET 1 OF 1	
DIMENSIONS					
U.S. INCHES					
METRIC MM					

Mouser Electronics

Authorized Distributor

Click to View Pricing, Inventory, Delivery & Lifecycle Information:

[Amphenol:](#)

[L77DFCF37S](#) [L77DFAF15S](#) [L77DFBF25S](#) [L77DFEF09S](#)