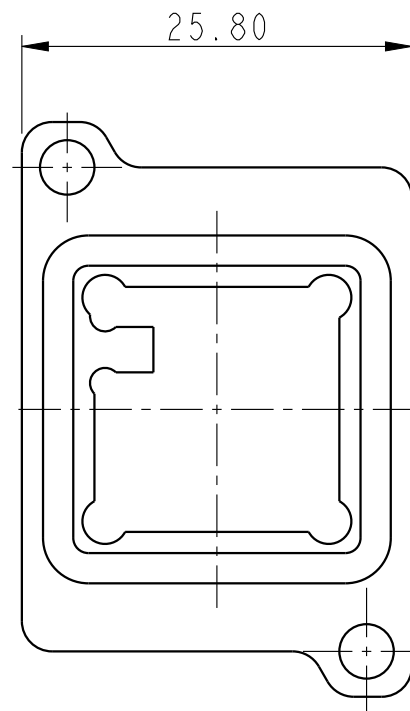
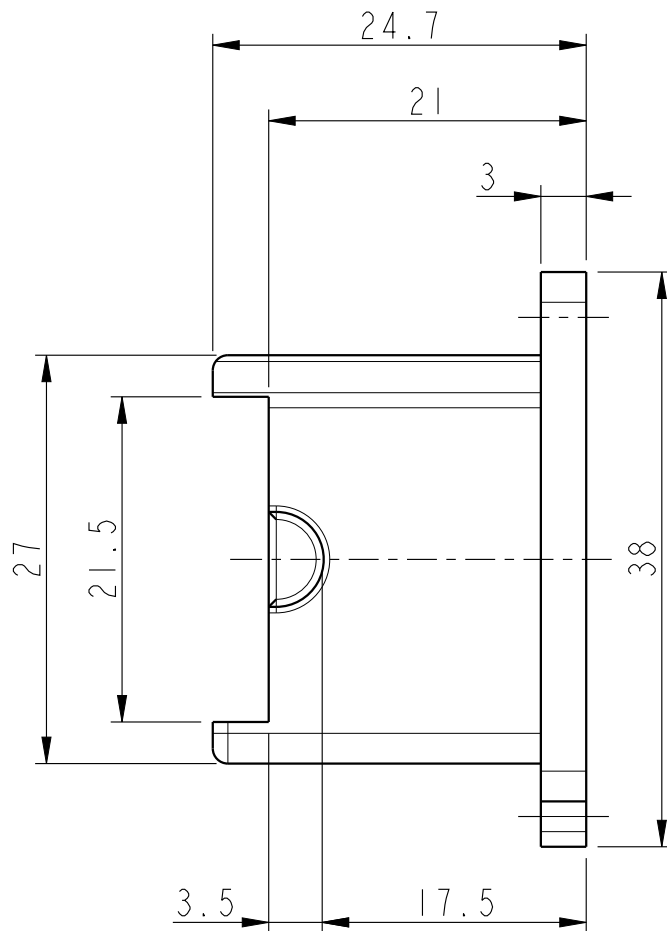
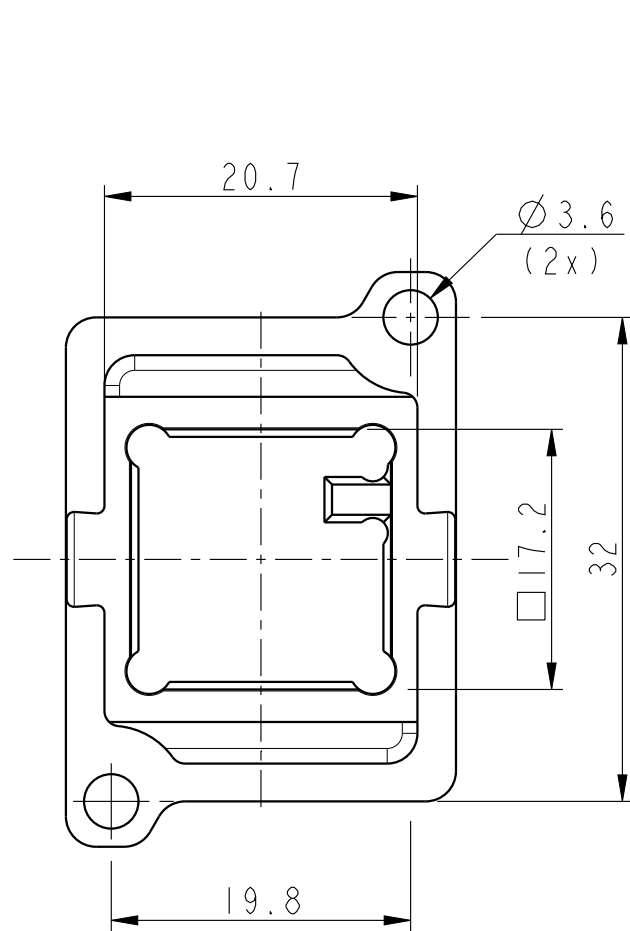
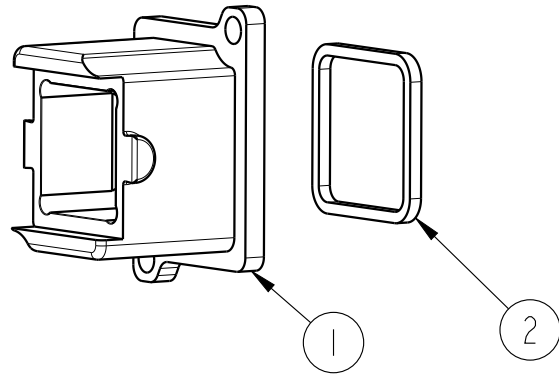


PART NUMBER
10138460-101LF

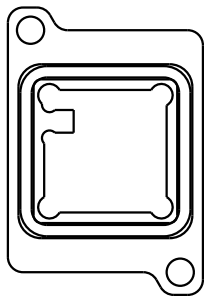
SL NO	DESCRIPTION	MATERIAL	PLATING
1	SCREWABLE RECEPTACLE BODY	ALUMINIUM	PASSIVATION
2	PANEL SEALING GASKET	SILICONE	-



NOTES :-

- PART WILL BE SUPPLIED ONLY IN ASSEMBLED FORM
- SCREWS TO BE USED ARE M3 X 6MM; MATERIAL-STAINLESS STEEL
- CASTED MOUNTING PANEL SHOULD HAVE ON ITS REAR SIDE AN INTEGRAL RECTANGULAR REINFORCED RIBS OF 3MM THICKNESS AND 4MM WIDTH ALONG THE MOUNTING SCREW PLANE AT THE TOP AND BOTTOM TO ACCOMODATE THE BLIND INTERNAL SCREW THREAD

PACKING CONFIGURATION
(ASSEMBLED FORM)



spec ref				dr	Jibin John	2016/11/08	projection	MM	size	A3	scale	1:1				
tolerance std	TOLERANCES UNLESS OTHERWISE SPECIFIED			eng	Varghese, Bone	2018/09/08			ecp no	ELX-I-30701-1						
				chr	-	-										
ISO 406				appr	Varma Sudhir	2018/09/12	product family		OCTIS	rel level	Released					
ISO 1101				Amphenol FCI			title		BULKHEAD (RECEPTACLE) FOR SIGNAL		dwg no		10138460		rev	C
			OCTIS, 26MM PITCH													
surface	linear	0.X	±0.3				cat. no.		-	Product - Customer Drw				sheet 1 of 1		
ISO 1302		angular	0°				±2°									

Mouser Electronics

Authorized Distributor

Click to View Pricing, Inventory, Delivery & Lifecycle Information:

[FCI / Amphenol:](#)

[10138460-101LF](#)