

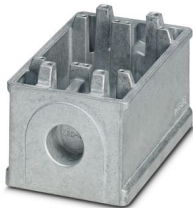
# HC-B 32-SFS-72-O2M32-EEE - Housing



1580527

<https://www.phoenixcontact.com/us/products/1580527>

Please be informed that the data shown in this PDF document is generated from our online catalog. Please find the complete data in the user documentation. Our general terms of use for downloads are valid.



HEAVYCON-ADVANCE pedestal enclosure B32, for increased environmental requirements, EMC-conductive, for Allen wrench screw locking, with 2x M32x1.5 opposite cable outlets

## Commercial data

Item number	1580527
Packing unit	6 pc
Minimum order quantity	1 pc
Product key	BF7AAA
Catalog page	Page 542 (C-4-2013)
GTIN	4046356463232
Weight per piece (including packing)	222.22 g
Weight per piece (excluding packing)	222.22 g
Country of origin	DE

# HC-B 32-SFS-72-O2M32-EEE - Housing



1580527

<https://www.phoenixcontact.com/us/products/1580527>

## Technical data

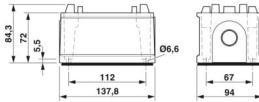
### Notes

General	For contact inserts HC-B32, DD144, M
---------	--------------------------------------

### Product properties

Product type	Housing with screw locking
Housing type	Box mounting bases
Type	B32
No. of cable outlets	2
Type of the screw connection	2x M32
Fixing screws	M6 (5 mm Allen screw)
Shielded	yes
Cable outlet	lateral
Pg screw connection	none

### Dimensions

Dimensional drawing	
Width	94 mm
Height	72 mm
Length	138 mm

### Material specifications

Seal material	NBR, conductive
Housing material	Die-cast aluminum, salt water resistant
Housing surface material	uncoated

### Environmental and real-life conditions

#### Ambient conditions

Degree of protection	IP66
	IP68 (0.2 bar/24 h)
	IP69K
Enclosure rating (NEMA)	4
	4X
	6P
	12
Ambient temperature (operation)	-40 °C ... 125 °C

### Mechanical properties

#### Mechanical data

# HC-B 32-SFS-72-O2M32-EEE - Housing



1580527

<https://www.phoenixcontact.com/us/products/1580527>

Type of the screw connection	2x M32
Locking type	Nut

## Mounting

Fixing screws	M6 (5 mm Allen screw)
---------------	-----------------------

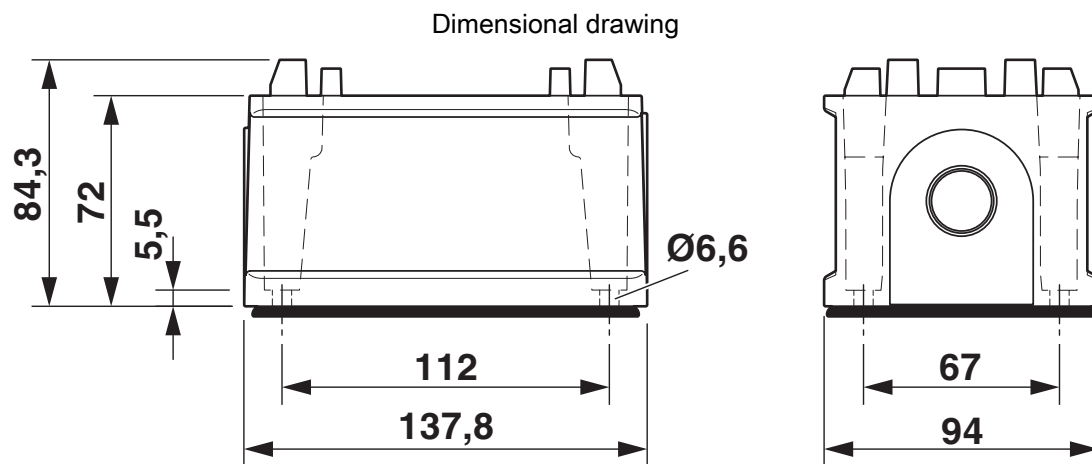
# HC-B 32-SFS-72-O2M32-EEE - Housing

1580527

<https://www.phoenixcontact.com/us/products/1580527>



## Drawings



Dimensional drawing

# HC-B 32-SFS-72-O2M32-EEE - Housing

1580527

<https://www.phoenixcontact.com/us/products/1580527>



## Classifications

### ECLASS

ECLASS-11.0	27440202
ECLASS-13.0	27440202

# HC-B 32-SFS-72-O2M32-EEE - Housing



1580527

<https://www.phoenixcontact.com/us/products/1580527>

## Environmental product compliance

EU REACH SVHC

REACH candidate substance (CAS No.)	No substance above 0.1 wt%
-------------------------------------	----------------------------

# HC-B 32-SFS-72-O2M32-EEE - Housing



1580527

<https://www.phoenixcontact.com/us/products/1580527>

## Accessories

### G-INS-M32-M68N-PNES-GY - Cable gland

1411127

<https://www.phoenixcontact.com/us/products/1411127>



Cable gland, material for screw connection: PA, application: Standard, external cable diameter 15 mm ... 21 mm, shielding: no, connecting thread: M32 x 1.5, color: silver-grey RAL 7001

---

### G-INS-M32-M68N-PNES-BK - Cable gland

1411136

<https://www.phoenixcontact.com/us/products/1411136>



Cable gland, material for screw connection: PA, application: Standard, external cable diameter 15 mm ... 21 mm, shielding: no, connecting thread: M32 x 1.5, color: jet black RAL 9005

# HC-B 32-SFS-72-O2M32-EEE - Housing

1580527

<https://www.phoenixcontact.com/us/products/1580527>



## G-INS-M32-M68N-NNES-S - Cable gland

1411166

<https://www.phoenixcontact.com/us/products/1411166>



Cable gland, material for screw connection: Brass, nickel-plated, application: Standard, external cable diameter 15 mm ... 21 mm, shielding: no, connecting thread: M32 x 1.5, color: silver, with O-ring

---

## HC-M-KV-M32(19-27) - Cable gland

1646010

<https://www.phoenixcontact.com/us/products/1646010>



Metal screw connection up to 5 bar, thread length: 8 mm, cable diameter: 19 - 27 mm, WAF 43, screw connection: M32



# HC-B 32-SFS-72-O2M32-EEE - Housing

1580527

<https://www.phoenixcontact.com/us/products/1580527>



## G-INSEC-M32-M68N-NCRS-S - Cable gland

1411191

<https://www.phoenixcontact.com/us/products/1411191>



Cable gland, material for screw connection: Brass, nickel-plated, application: EMC, external cable diameter 14 mm ... 21 mm, shielding: yes, connecting thread: M32 x 1.5, color: silver, with O-ring

---

## HC-M-KV-Z-M32 - Cable gland

1646162

<https://www.phoenixcontact.com/us/products/1646162>



Metal screw connection with strain relief clamp, thread length: 8 mm, cable sealing area: 18 - 27 mm, clamping area: 19 - 30 mm, SW 40, screw connection: M32

## HC-B 32-SFS-72-O2M32-EEE - Housing

1580527

<https://www.phoenixcontact.com/us/products/1580527>



## HC-M-KV-T-M32 - Cable gland

1646201

<https://www.phoenixcontact.com/us/products/1646201>

Metal screw connection with cable bend protection and strain relief, thread length: 8 mm, cable sealing area: 18 - 27 mm, clamping area: 20 - 30 mm, SW 40, screw connection: M32



---

## REDUC-M-KV-M32/M25 - Reducing adapter

1647637

<https://www.phoenixcontact.com/us/products/1647637>

Reducing adapter, connecting thread: M32 x 1.5, color: silver, with O-ring



# HC-B 32-SFS-72-O2M32-EEE - Housing

1580527

<https://www.phoenixcontact.com/us/products/1580527>



## ENLAR-M-KV-M32/M40 - Extension adapter

1647682

<https://www.phoenixcontact.com/us/products/1647682>

Extension adapter, connecting thread: M32 x 1.5, color: silver, with O-ring



---

## HC-M-BS-M32 - Screw plug

1645862

<https://www.phoenixcontact.com/us/products/1645862>

Screw plug, material for screw connection: Brass, nickel-plated, connecting thread: M32 x 1.5, color: silver



# HC-B 32-SFS-72-O2M32-EEE - Housing



1580527

<https://www.phoenixcontact.com/us/products/1580527>

## SF-BIT-HEXB 5-89 - Screw insert

1208911

<https://www.phoenixcontact.com/us/products/1208911>



Screw bit, hexagonal with ball head, E6.3-1/4" drive, size: Hex 5 x 89 mm, hardened, suitable for holder according to DIN 3126-F 6.3/ISO 1173

---

## SF-M BH - Screwdriver

1212070

<https://www.phoenixcontact.com/us/products/1212070>



Bit screwdriver, with 1/4" quick-action chuck, handle length 119 mm, 2-component handle, with non-slip grip, suitable for bits according to DIN 3126-C 6.3 and E 6.3/ISO 1173, magnetic

---

Phoenix Contact 2024 © - all rights reserved  
<https://www.phoenixcontact.com>

Phoenix Contact USA  
586 Fulling Mill Road  
Middletown, PA 17057, United States  
(+717) 944-1300  
[info@phoenixcon.com](mailto:info@phoenixcon.com)