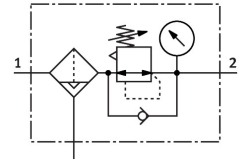


# Filter regulator MS6-LFR-1/2-D6-CRV-AS

Part number: 529178

**FESTO**



[PDF](#) General operating condition

## Data sheet

Feature	Value
Size	6
Series	MS
Actuator lock	Rotary knob with detent can be closed with accessories
Mounting position	Vertical +/- 5°
Grade of filtration	5 µm
Condensate drain	Fully automatic Manual, non-detenting
Structural design	Filter regulator with pressure gauge
Max. condensate volume	38 ml
Controller function	Outlet pressure constant With secondary exhausting
Bowl guard	Plastic bowl guard
Degree of condensate separation	>75 %
Symbol	00991587
Pressure gauge	with pressure gauge
Operating pressure	0.2 MPa ... 1.2 MPa
Operating pressure	2 bar ... 12 bar
Pressure regulation range	0.3 bar ... 7 bar
Max. pressure hysteresis	0.025 MPa
Max. pressure hysteresis	0.25 bar
Max. pressure hysteresis	3.625 psi
Standard nominal flow rate	5600 l/min
Operating medium	Compressed air as per ISO 8573-1:2010 [7:4:-] Inert gas
Corrosion resistance class (CRC)	2 - Moderate corrosion stress
LABS (PWIS) conformity	VDMA24364-B1/B2-L
Storage temperature	-10 °C ... 60 °C
For use in the food industry	See supplementary material information
Air quality class at the output	Compressed air as per ISO 8573-1:2010 [6:4:4]
Temperature of medium	-10 °C ... 60 °C
Ambient temperature	-10 °C ... 60 °C
Pore size	≤5 µm
Product weight	875 g

Feature	Value
Type of mounting	Optionally: Front panel mounting Line installation With accessories
Pneumatic connection 1	G1/2
Pneumatic connection 2	G1/2
Note on materials	RoHS-compliant
Material of operator panel	PA POM
Seals material	NBR
Compressed air filter material	PE
Housing material	Die-cast aluminum
Diaphragm material	NBR
Material of bowl	PC
Separating disc material	POM