

# RJ45 Jack, Right Angle, Tab Down, Shielded, Low Profile, 8P8C

ARJ014-011157

RoHS/RoHS II Compliant



15.74 x 11.75 x 18.65mm

## FEATURES:

- 8P8C standard DIP Jack
- Compliant with IEEE802.3 standard
- High performance for maximum EMI suppression
- High reliability 750 mating/unmating cycles

## APPLICATIONS:

- Designed for most leading PHY IC manufacturers such as Broadcom, Marvell, Microsemi.
- Side entry with wide temperature range(-40°C~85°C)
- Applicable for Ethernet Switch, Servers, & Access Point Routers

## STANDARD SPECIFICATIONS

**Operating temperature range:** -40°C to +85°C **Storage temperature range:** -40°C to +85°C

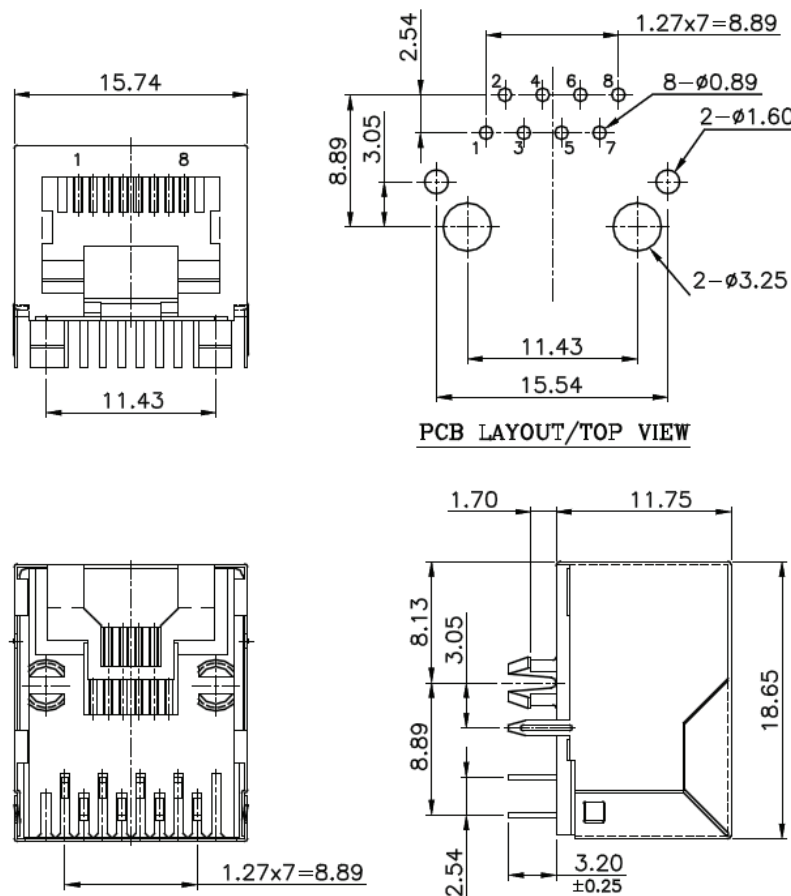
### Standard Electrical Specifications

**Voltage Rating:** 125 Vac RMS  
**Current Rating:** 1.5 Amp  
**Contact Resistance:** 40 mΩ Max  
**Insulation resistance:** 1000 MΩ Min @500 Vdc  
**Dielectric strength:** 1000Vac RMS @50 or 60Hz, 1Min

### Standard Mechanical Specifications

**Mating/Unmating force:** 2.2kgF max  
**Retention strength:** 7.7kgF min between jack and plug  
**Operating life:** 750 cycles min

## MECHANICAL DIMENSIONS



Dimensions: mm

# RJ45 Jack, Right Angle, Tab Down, Shielded, Low Profile, 8P8C

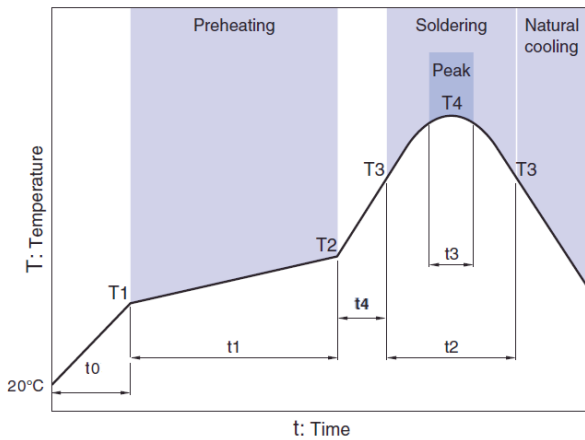
ARJ014-011157

RoHS/RoHS II Compliant



15.74 x 11.75 x 18.65mm

## DIP WAVE SOLDERING CURVE



Preheating					Soldering		Peak	
Temp.			Time		Temp.	Time	Temp.	Time
T1	T2	t0	t1	t4	T3	t2	T4	t3
100°C	150°C	30 to 60s	30 to 120s	30 to 60s	200°C	30s	230°C	5s

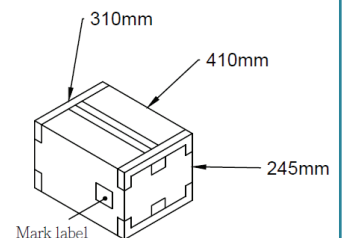
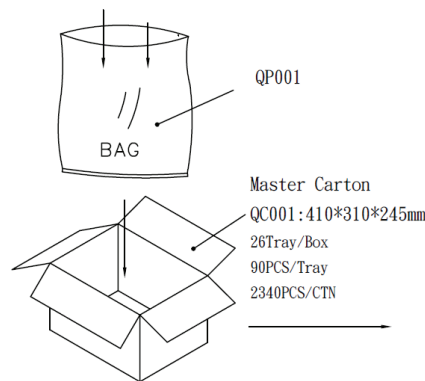
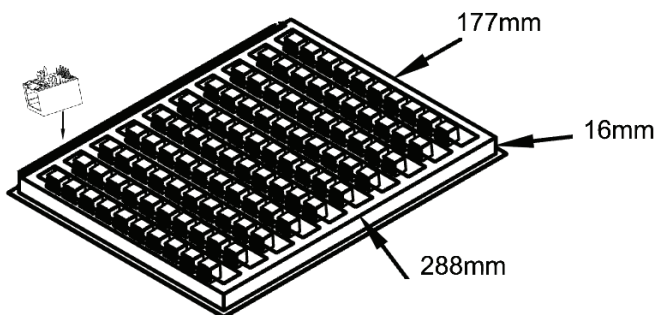
Profile Feature	Pb-Free Assembly
Preheat -Temperature Min -Temperature Max -Time (min to max)	100°C 200°C 60-120 seconds
Time maintained above: -Temperature -Time	200°C 30 seconds
Peak/Classification Temperature	230±5°C
Time within 230±5°C of actual Peak Temperature	5 seconds
Time 25°C to Peak Temperature	4 minutes 30 sec. max.

## PACKAGING:

**Packing:** (90pcs/tray) **MOQ:** 540pcs  
**Weight:** 4.02 grams/pcs

**Packaging material:** PET

**Outer carton unit(optional):**2340pcs/ 26trays/box,  
**Gross Weight:** 11.0kg



**Dimensions: mm**

**ATTENTION:** Abracon Corporation's products are COTS – Commercial-Off-The-Shelf products; suitable for Commercial, Industrial and, where designated, Automotive Applications. Abracon's products are not specifically designed for Military, Aviation, Aerospace, Life-dependant Medical applications or any application requiring high reliability where component failure could result in loss of life and/or property. For applications requiring high reliability and/or presenting an extreme operating environment, written consent and authorization from Abracon Corporation is required. Please contact Abracon Corporation for more information.

ABRACON IS  
ISO 9001:2008  
CERTIFIED



2 Faraday, Suite# B | Irvine | CA 92618 **Revised: 11.17.15**

Ph. 949.546.8000 | Fax. 949.546.8001

Visit [www.abracon.com](http://www.abracon.com) for Terms and Conditions of Sale