

# HC-B 16-SMLD-67/M1M25 - Housing



1586879

<https://www.phoenixcontact.com/us/products/1586879>

Please be informed that the data shown in this PDF document is generated from our online catalog. Please find the complete data in the user documentation. Our general terms of use for downloads are valid.



Box mounting base, with single locking latch, height 67 mm, with screw connection, 1x M25, with protective cover

## Commercial data

Item number	1586879
Packing unit	10 pc
Minimum order quantity	1 pc
Product key	BF7AAC
Catalog page	Page 573 (PC-2011)
GTIN	4046356426961
Weight per piece (including packing)	400.72 g
Weight per piece (excluding packing)	400.72 g
Country of origin	DE

# HC-B 16-SMLD-67/M1M25 - Housing



1586879

<https://www.phoenixcontact.com/us/products/1586879>

## Technical data

## Notes

General	For contact inserts HC-B16, BB32, BBB40, D40, DD72, HS6, M, K
---------	---

## Product properties

Product type	Housing with locking latch
Housing type	Box mounting bases
Application	Standard
Type	B16
No. of cable outlets	1
Type of the screw connection	1x M25
Protective cover	yes
Shielded	no
Cable outlet	left (view of the opened single locking latch)
Pg screw connection	with

## Dimensions

Dimensional drawing	
Width	57 mm
Height	67 mm
Length	117 mm
Wrench size, union nut	25 mm

## Material specifications

Material Screw connection	Brass, nickel-plated
Seal material Cable seal	NBR
Housing material	die-cast aluminum
Housing surface material	Powder-coated, gray
Material, protective cover	PA
Locking latch material	Stainless steel, handle: PA

## Mechanical properties

## Mechanical data

Type of the screw connection	1x M25
Locking type	Latch

## Cable/line

# HC-B 16-SMLD-67/M1M25 - Housing



1586879

<https://www.phoenixcontact.com/us/products/1586879>

External cable diameter Cable 1	9 mm ... 18 mm
---------------------------------	----------------

## Connection data

External cable diameter	9 mm ... 18 mm
-------------------------	----------------

## Environmental and real-life conditions

### Ambient conditions

Degree of protection	IP65 (When plugged in)
	IP54 (with closed protective cover)
Ambient temperature (operation)	-40 °C ... 125 °C

# HC-B 16-SMLD-67/M1M25 - Housing

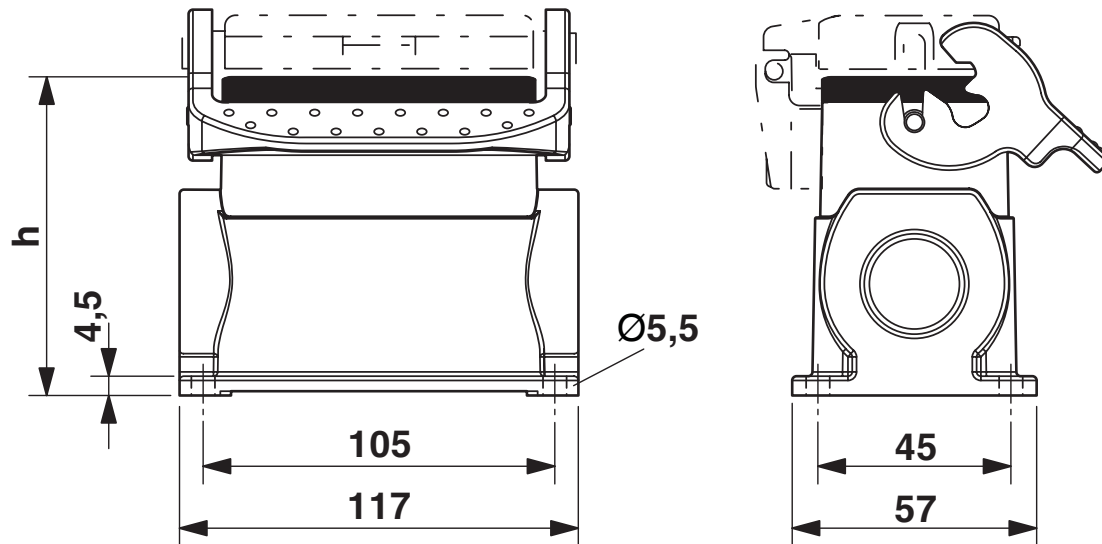
1586879

<https://www.phoenixcontact.com/us/products/1586879>



## Drawings

Dimensional drawing



Dimensional drawing;  $h = 67 \text{ mm}$

# HC-B 16-SMLD-67/M1M25 - Housing



1586879

<https://www.phoenixcontact.com/us/products/1586879>

## Classifications

### ECLASS

ECLASS-11.0	27440202
ECLASS-13.0	27440202

### UNSPSC

UNSPSC 21.0	31261501
-------------	----------

# HC-B 16-SMLD-67/M1M25 - Housing



1586879

<https://www.phoenixcontact.com/us/products/1586879>

## Environmental product compliance

China RoHS	
Environment friendly use period (EFUP)	EFUP-E
	No hazardous substances above the limits
EU REACH SVHC	
REACH candidate substance (CAS No.)	No substance above 0.1 wt%

# HC-B 16-SMLD-67/M1M25 - Housing

1586879

<https://www.phoenixcontact.com/us/products/1586879>



## Accessories

### G-INS-M25-M68N-NNES-S - Cable gland

1411165

<https://www.phoenixcontact.com/us/products/1411165>



Cable gland, material for screw connection: Brass, nickel-plated, application: Standard, external cable diameter 11 mm ... 17 mm, shielding: no, connecting thread: M25 x 1.5, color: silver, with O-ring

---

### HC-M-KV-M25(14-21) - Cable gland

1646007

<https://www.phoenixcontact.com/us/products/1646007>



Metal screw connection up to 5 bar, thread length: 7 mm, cable diameter: 14 - 21 mm, WAF 34, screw connection: M25

## HC-B 16-SMLD-67/M1M25 - Housing

1586879

<https://www.phoenixcontact.com/us/products/1586879>



### HC-M-KV-M25(1ASI) - Cable gland

1584020

<https://www.phoenixcontact.com/us/products/1584020>



Metal screw connection for an AS-Interface flat-ribbon conductor, thread type M25

---

### HC-M-KV-M25(1X10/1X11) - Cable gland

1580228

<https://www.phoenixcontact.com/us/products/1580228>



Special cable screw connection M25, brass nickel-plated, grommet with 10 mm and 11 mm holes

---

Phoenix Contact 2024 © - all rights reserved  
<https://www.phoenixcontact.com>

Phoenix Contact USA  
586 Fulling Mill Road  
Middletown, PA 17057, United States  
(+717) 944-1300  
[info@phoenixcon.com](mailto:info@phoenixcon.com)