

PP-H 2,5/1-M BK - Plug

3061937

<https://www.phoenixcontact.com/us/products/3061937>



Please be informed that the data shown in this PDF document is generated from our online catalog. Please find the complete data in the user documentation. Our general terms of use for downloads are valid.



Plug, nom. voltage: 500 V, nominal current: 24 A, number of connections: 1, number of positions: 1, connection method: Push-in connection, 1 level, Rated cross section: 2.5 mm², cross section: 0.14 mm² - 4 mm², color: black

Product description

Connector element center, left housing with engagement pin, right opened without cover

Your advantages

- Large-surface labeling option
- The Push-in technology COMBI plugs for self-assembly provide solutions that users can implement themselves
- The plug is assembled directly on site by snapping together single-position plug elements

Commercial data

Item number	3061937
Packing unit	50 pc
Minimum order quantity	1 pc
Product key	BE2244
GTIN	4055626082226
Weight per piece (including packing)	3.582 g
Weight per piece (excluding packing)	3.249 g
Country of origin	PL

PP-H 2,5/1-M BK - Plug



3061937

<https://www.phoenixcontact.com/us/products/3061937>

Technical data

Product properties

Product type	Terminal plug
Number of positions	1
Pitch	5.2 mm
Number of connections	1
Number of rows	1
Potentials	1

Insulation characteristics

Overvoltage category	III
Degree of pollution	3

Electrical properties

Rated surge voltage	6 kV
Maximum power dissipation for nominal condition	0.77 W

Connection data

Number of connections per level	1
Nominal cross section	2.5 mm ²

1 level

Stripping length	10 mm
Internal cylindrical gage	A3
Connection in acc. with standard	IEC 61984
Conductor cross section rigid	0.14 mm ² ... 4 mm ²
Cross section AWG	26 ... 12 (converted acc. to IEC)
Conductor cross section flexible	0.14 mm ² ... 2.5 mm ²
Conductor cross section, flexible [AWG]	26 ... 14 (converted acc. to IEC)
Conductor cross-section flexible (ferrule without plastic sleeve)	0.14 mm ² ... 2.5 mm ²
Flexible conductor cross section (ferrule with plastic sleeve)	0.14 mm ² ... 2.5 mm ²
2 conductors with the same cross section, flexible, with TWIN ferrule with plastic sleeve	0.5 mm ²
Nominal current	24 A
Maximum load current	24 A (with 4 mm ² conductor cross section)
Nominal voltage	500 V
Nominal cross section	2.5 mm ²

1 level Connection cross sections directly pluggable

Conductor cross section rigid	0.34 mm ² ... 4 mm ²
Conductor cross-section flexible (ferrule without plastic sleeve)	0.34 mm ² ... 2.5 mm ²
Flexible conductor cross section (ferrule with plastic sleeve)	0.34 mm ² ... 2.5 mm ²

Dimensions

PP-H 2,5/1-M BK - Plug



3061937

<https://www.phoenixcontact.com/us/products/3061937>

Width	5.2 mm
Height	39 mm
Pitch	5.2 mm

Material specifications

Color	black
Flammability rating according to UL 94	V0
Insulating material group	I
Insulating material	PA
Static insulating material application in cold	-60 °C
Temperature index of insulation material (DIN EN 60216-1 (VDE 0304-21))	130 °C
Relative insulation material temperature index (Elec., UL 746 B)	130 °C
Fire protection for rail vehicles (DIN EN 45545-2) R22	HL 1 - HL 3
Fire protection for rail vehicles (DIN EN 45545-2) R23	HL 1 - HL 3
Fire protection for rail vehicles (DIN EN 45545-2) R24	HL 1 - HL 3
Fire protection for rail vehicles (DIN EN 45545-2) R26	HL 1 - HL 3
Calorimetric heat release NFPA 130 (ASTM E 1354)	28 MJ/kg
Surface flammability NFPA 130 (ASTM E 162)	passed
Specific optical density of smoke NFPA 130 (ASTM E 662)	passed
Smoke gas toxicity NFPA 130 (SMP 800C)	passed

Mechanical properties

Mechanical data

Open side panel	No
-----------------	----

Environmental and real-life conditions

Ambient conditions

Ambient temperature (storage/transport)	-25 °C ... 60 °C (for a short time, not exceeding 24 h, -60 °C to +70 °C)
Ambient temperature (assembly)	-5 °C ... 70 °C
Ambient temperature (actuation)	-5 °C ... 70 °C
Permissible humidity (storage/transport)	30 % ... 70 %

Standards and regulations

Connection in acc. with standard	IEC 61984
----------------------------------	-----------

Mounting

Assembly note	Use of a parallel pressing tool is recommended for easy latching of the COMBI connector and coupling elements for self-assembly
---------------	---

PP-H 2,5/1-M BK - Plug

3061937

<https://www.phoenixcontact.com/us/products/3061937>

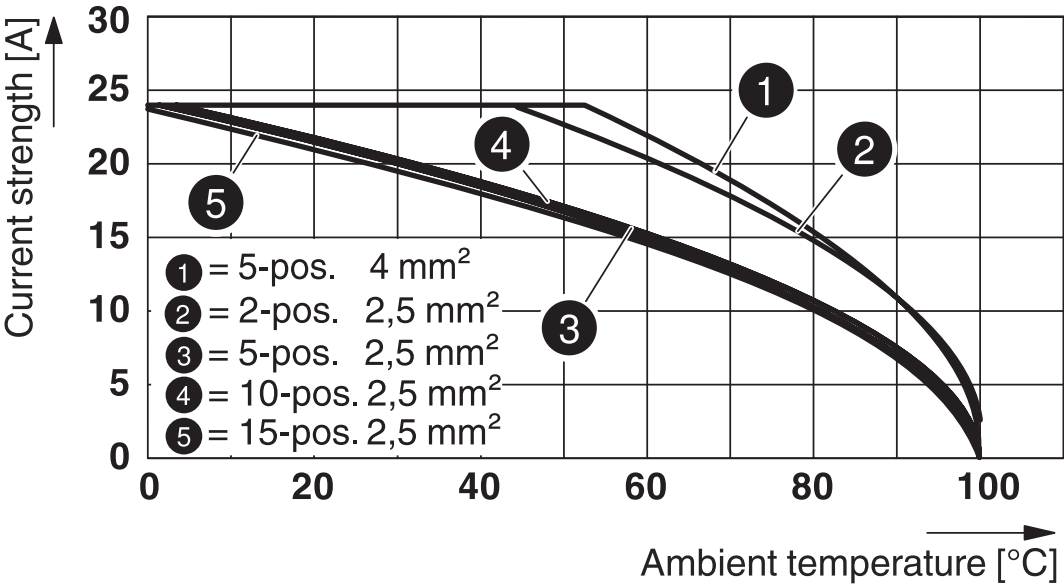


Drawings

Circuit diagram



Diagram



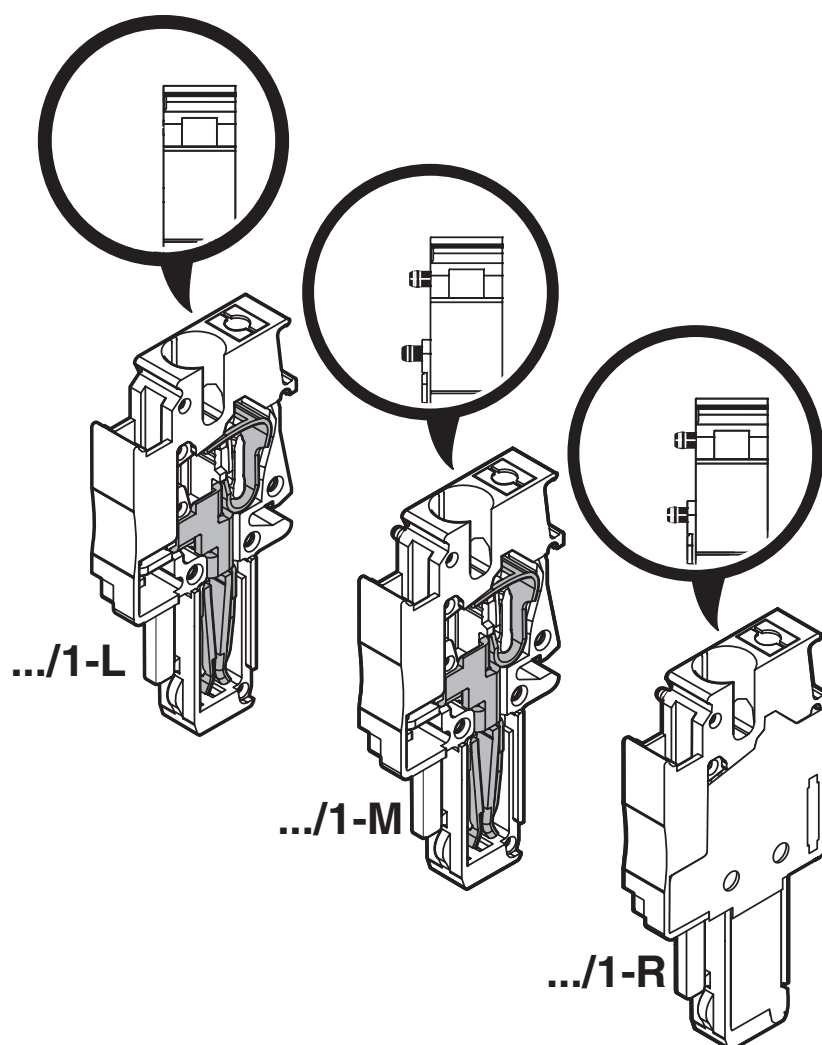
PP-H 2,5/1-M BK - Plug

3061937

<https://www.phoenixcontact.com/us/products/3061937>



Schematic diagram



PP-H 2,5/1-M BK - Plug

3061937

<https://www.phoenixcontact.com/us/products/3061937>



Classifications

ECLASS

ECLASS-11.0	27141151
-------------	----------

ETIM

ETIM 8.0	EC002021
----------	----------

UNSPSC

UNSPSC 21.0	39121400
-------------	----------

PP-H 2,5/1-M BK - Plug

3061937

<https://www.phoenixcontact.com/us/products/3061937>



Environmental product compliance

EU RoHS	
Fulfills EU RoHS substance requirements	Yes, No exemptions
China RoHS	
Environment friendly use period (EFUP)	EFUP-E
	No hazardous substances above the limits
EU REACH SVHC	
REACH candidate substance (CAS No.)	No substance above 0.1 wt%

PP-H 2,5/1-M BK - Plug

3061937

<https://www.phoenixcontact.com/us/products/3061937>



Accessories

PZ/2 - Strain relief

3040627

<https://www.phoenixcontact.com/us/products/3040627>



Strain relief, width: 9.3 mm, height: 48.7 mm, number of positions: 2, color: black

PZ/4 - Strain relief

3040643

<https://www.phoenixcontact.com/us/products/3040643>



Strain relief, width: 19.6 mm, height: 48.7 mm, number of positions: 4, color: black

PP-H 2,5/1-M BK - Plug

3061937

<https://www.phoenixcontact.com/us/products/3061937>



PR - Latching

3040559

<https://www.phoenixcontact.com/us/products/3040559>



Latching, width: 4.4 mm, height: 29.8 mm, number of positions: 1, color: orange

PR/2 - Latching

3040630

<https://www.phoenixcontact.com/us/products/3040630>



Latching, width: 10 mm, height: 29.8 mm, number of positions: 2, color: orange

PP-H 2,5/1-M BK - Plug

3061937

<https://www.phoenixcontact.com/us/products/3061937>



PRT/2 - Latching

3040631

<https://www.phoenixcontact.com/us/products/3040631>



Latching, can only be released using a screwdriver, width: 9 mm, height: 23.2 mm, number of positions: 2, color: orange

PRZ - Latching

3040614

<https://www.phoenixcontact.com/us/products/3040614>



Latching, number of positions: 2, length: 64 mm, color: orange

PP-H 2,5/1-M BK - Plug

3061937

<https://www.phoenixcontact.com/us/products/3061937>



PH 2,5/ 2 - Cable housing

3209691

<https://www.phoenixcontact.com/us/products/3209691>



Cable housing, pitch: 10.4 mm, depth: 36.8 mm, width: 10.4 mm, height: 19.9 mm, number of positions: 2, color: gray

PH 2,5/ 3 - Cable housing

3209701

<https://www.phoenixcontact.com/us/products/3209701>



Cable housing, pitch: 15.6 mm, depth: 36.8 mm, width: 15.6 mm, height: 19.9 mm, number of positions: 3, color: gray

PP-H 2,5/1-M BK - Plug

3061937

<https://www.phoenixcontact.com/us/products/3061937>



PH 2,5/ 4 - Cable housing

3209714

<https://www.phoenixcontact.com/us/products/3209714>



Cable housing, pitch: 20.8 mm, depth: 36.8 mm, width: 20.8 mm, height: 19.9 mm, number of positions: 4, color: gray

PH 2,5/ 5 - Cable housing

3209727

<https://www.phoenixcontact.com/us/products/3209727>



Cable housing, pitch: 26 mm, depth: 36.8 mm, width: 26 mm, height: 19.9 mm, number of positions: 5, color: gray

PP-H 2,5/1-M BK - Plug

3061937

<https://www.phoenixcontact.com/us/products/3061937>



PH 2,5/ 6 - Cable housing

3209730

<https://www.phoenixcontact.com/us/products/3209730>



Cable housing, pitch: 31.2 mm, depth: 36.8 mm, width: 31.2 mm, height: 19.9 mm, number of positions: 6, color: gray

PH 2,5/ 7 - Cable housing

3209743

<https://www.phoenixcontact.com/us/products/3209743>



Cable housing, pitch: 36.4 mm, depth: 36.8 mm, width: 36.4 mm, height: 19.9 mm, number of positions: 7, color: gray

PP-H 2,5/1-M BK - Plug

3061937

<https://www.phoenixcontact.com/us/products/3061937>



PH 2,5/ 8 - Cable housing

3209756

<https://www.phoenixcontact.com/us/products/3209756>



Cable housing, pitch: 41.6 mm, depth: 36.8 mm, width: 41.6 mm, height: 19.9 mm, number of positions: 8, color: gray

PH 2,5/ 9 - Cable housing

3209507

<https://www.phoenixcontact.com/us/products/3209507>



Cable housing, pitch: 46.8 mm, depth: 36.8 mm, width: 46.8 mm, height: 19.9 mm, number of positions: 9, color: gray

PP-H 2,5/1-M BK - Plug

3061937

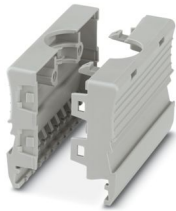
<https://www.phoenixcontact.com/us/products/3061937>



PH 2,5/10 - Cable housing

3209769

<https://www.phoenixcontact.com/us/products/3209769>

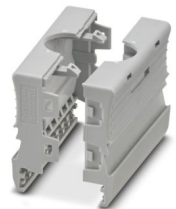


Cable housing, pitch: 52 mm, depth: 36.8 mm, width: 52 mm, height: 19.9 mm, number of positions: 10, color: gray

PH 2,5/11 - Cable housing

3209772

<https://www.phoenixcontact.com/us/products/3209772>



Cable housing, pitch: 57.2 mm, depth: 36.8 mm, width: 57.2 mm, height: 19.9 mm, number of positions: 11, color: gray

PP-H 2,5/1-M BK - Plug

3061937

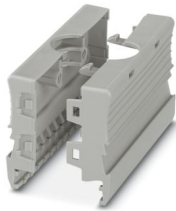
<https://www.phoenixcontact.com/us/products/3061937>



PH 2,5/12 - Cable housing

3209785

<https://www.phoenixcontact.com/us/products/3209785>

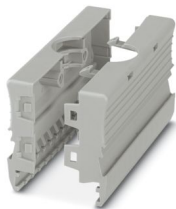


Cable housing, pitch: 62.4 mm, depth: 36.8 mm, width: 62.4 mm, height: 19.9 mm, number of positions: 12, color: gray

PH 2,5/13 - Cable housing

3209798

<https://www.phoenixcontact.com/us/products/3209798>



Cable housing, pitch: 67.6 mm, depth: 36.8 mm, width: 67.6 mm, height: 19.9 mm, number of positions: 13, color: gray

PP-H 2,5/1-M BK - Plug

3061937

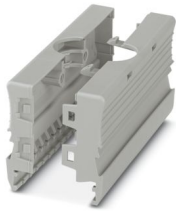
<https://www.phoenixcontact.com/us/products/3061937>



PH 2,5/14 - Cable housing

3209808

<https://www.phoenixcontact.com/us/products/3209808>



Cable housing, pitch: 72.8 mm, depth: 36.8 mm, width: 72.8 mm, height: 19.9 mm, number of positions: 14, color: gray

PH 2,5/15 - Cable housing

3209811

<https://www.phoenixcontact.com/us/products/3209811>



Cable housing, pitch: 78 mm, depth: 36.8 mm, width: 78 mm, height: 19.9 mm, number of positions: 15, color: gray

PP-H 2,5/1-M BK - Plug

3061937

<https://www.phoenixcontact.com/us/products/3061937>



ST-BW - Actuation tool

1207608

<https://www.phoenixcontact.com/us/products/1207608>



Actuation tool, for all 2.5 mm² - 4.0 mm² spring-cages

PP-H 2,5/1-L - Plug

3210062

<https://www.phoenixcontact.com/us/products/3210062>



Plug, nom. voltage: 500 V, nominal current: 24 A, number of connections: 1, number of positions: 1, connection method: Push-in connection, 1 level, Rated cross section: 2.5 mm², cross section: 0.14 mm² - 4 mm², color: gray

PP-H 2,5/1-M BK - Plug

3061937

<https://www.phoenixcontact.com/us/products/3061937>



PP-H 2,5/1-L BU - Plug

3210075

<https://www.phoenixcontact.com/us/products/3210075>



Plug, nom. voltage: 500 V, nominal current: 24 A, number of connections: 1, number of positions: 1, connection method: Push-in connection, 1 level, Rated cross section: 2.5 mm², cross section: 0.14 mm² - 4 mm², color: blue

PP-H 2,5/1-L GNYE - Plug

3210088

<https://www.phoenixcontact.com/us/products/3210088>



Plug, nom. voltage: 500 V, nominal current: 24 A, number of connections: 1, number of positions: 1, connection method: Push-in connection, 1 level, Rated cross section: 2.5 mm², cross section: 0.14 mm² - 4 mm², color: green-yellow

PP-H 2,5/1-M BK - Plug

3061937

<https://www.phoenixcontact.com/us/products/3061937>



PP-H 2,5/1-M - Plug

3210091

<https://www.phoenixcontact.com/us/products/3210091>



Plug, nom. voltage: 500 V, nominal current: 24 A, number of positions: 1, connection method: Push-in connection, 1 level, Rated cross section: 2.5 mm², cross section: 0.14 mm² - 4 mm², color: gray

PP-H 2,5/1-M BU - Plug

3210101

<https://www.phoenixcontact.com/us/products/3210101>



Plug, nom. voltage: 500 V, nominal current: 24 A, number of connections: 1, number of positions: 1, connection method: Push-in connection, 1 level, Rated cross section: 2.5 mm², cross section: 0.14 mm² - 4 mm², color: blue

PP-H 2,5/1-M BK - Plug

3061937

<https://www.phoenixcontact.com/us/products/3061937>



PP-H 2,5/1-M GNYE - Plug

3210114

<https://www.phoenixcontact.com/us/products/3210114>



Plug, nom. voltage: 500 V, nominal current: 24 A, number of connections: 1, number of positions: 1, connection method: Push-in connection, 1 level, Rated cross section: 2.5 mm², cross section: 0.14 mm² - 4 mm², color: green-yellow

PP-H 2,5/1-R - Plug

3210127

<https://www.phoenixcontact.com/us/products/3210127>



Plug, nom. voltage: 500 V, nominal current: 24 A, number of connections: 1, number of positions: 1, connection method: Push-in connection, 1 level, Rated cross section: 2.5 mm², cross section: 0.14 mm² - 4 mm², color: gray

PP-H 2,5/1-M BK - Plug

3061937

<https://www.phoenixcontact.com/us/products/3061937>



PP-H 2,5/1-R BU - Plug

3210130

<https://www.phoenixcontact.com/us/products/3210130>



Plug, nom. voltage: 500 V, nominal current: 24 A, number of connections: 1, number of positions: 1, connection method: Push-in connection, 1 level, Rated cross section: 2.5 mm², cross section: 0.14 mm² - 4 mm², color: blue

PP-H 2,5/1-R GNYE - Plug

3210143

<https://www.phoenixcontact.com/us/products/3210143>



Plug, nom. voltage: 500 V, nominal current: 24 A, number of connections: 1, number of positions: 1, connection method: Push-in connection, 1 level, Rated cross section: 2.5 mm², cross section: 0.14 mm² - 4 mm², color: green-yellow

PP-H 2,5/1-M BK - Plug

3061937

<https://www.phoenixcontact.com/us/products/3061937>



MPS-MT - Test plug

0201744

<https://www.phoenixcontact.com/us/products/0201744>



Test plug, with solder connection up to 1 mm² conductor cross section, number of positions: 1, color: gray

MPS-IH WH - Insulating sleeve

0201663

<https://www.phoenixcontact.com/us/products/0201663>

Insulating sleeve, color: white



PP-H 2,5/1-M BK - Plug

3061937

<https://www.phoenixcontact.com/us/products/3061937>



MPS-IH RD - Insulating sleeve

0201676

<https://www.phoenixcontact.com/us/products/0201676>

Insulating sleeve, color: red

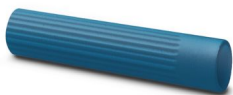


MPS-IH BU - Insulating sleeve

0201689

<https://www.phoenixcontact.com/us/products/0201689>

Insulating sleeve, color: blue



PP-H 2,5/1-M BK - Plug

3061937

<https://www.phoenixcontact.com/us/products/3061937>



MPS-IH YE - Insulating sleeve

0201692

<https://www.phoenixcontact.com/us/products/0201692>

Insulating sleeve, color: yellow



MPS-IH GN - Insulating sleeve

0201702

<https://www.phoenixcontact.com/us/products/0201702>

Insulating sleeve, color: green



PP-H 2,5/1-M BK - Plug

3061937

<https://www.phoenixcontact.com/us/products/3061937>



MPS-IH GY - Insulating sleeve

0201728

<https://www.phoenixcontact.com/us/products/0201728>

Insulating sleeve, color: gray



MPS-IH BK - Insulating sleeve

0201731

<https://www.phoenixcontact.com/us/products/0201731>

Insulating sleeve, color: black



PP-H 2,5/1-M BK - Plug

3061937

<https://www.phoenixcontact.com/us/products/3061937>



ISH 2,5/0,2 - Insulating sleeve

3002843

<https://www.phoenixcontact.com/us/products/3002843>

Insulating sleeve, color: white



ISH 2,5/0,5 - Insulating sleeve

3002856

<https://www.phoenixcontact.com/us/products/3002856>

Insulating sleeve, color: gray



PP-H 2,5/1-M BK - Plug

3061937

<https://www.phoenixcontact.com/us/products/3061937>



ISH 2,5/1,0 - Insulating sleeve

3002869

<https://www.phoenixcontact.com/us/products/3002869>



Insulating sleeve, color: black

ZBF 5:UNBEDRUCKT - Zack Marker strip, flat

0808642

<https://www.phoenixcontact.com/us/products/0808642>



Zack Marker strip, flat, Strip, white, unlabeled, can be labeled with: PLOTMARK, CMS-P1-PLOTTER, mounting type: snapped, for terminal block width: 5 mm, lettering field size: 5.1 x 5.2 mm, Number of individual labels: 10

PP-H 2,5/1-M BK - Plug

3061937

<https://www.phoenixcontact.com/us/products/3061937>



ZBF 5 CUS - Zack Marker strip, flat

0825025

<https://www.phoenixcontact.com/us/products/0825025>



Zack Marker strip, flat, can be ordered: Strip, white, labeled according to customer specifications, mounting type: snap into flat marker groove, for terminal block width: 5 mm, lettering field size: 5.15 x 5.15 mm, Number of individual labels: 10

ZBF 5,LGS:FORTL.ZAHLEN - Zack Marker strip, flat

0808671

<https://www.phoenixcontact.com/us/products/0808671>



Zack Marker strip, flat, Strip, white, labeled, printed horizontally: consecutive numbers 1 ... 10, 11 ... 20, etc. up to 491 ... 500, mounting type: snapped, for terminal block width: 5 mm, lettering field size: 5.15 x 5.15 mm, Number of individual labels: 10

PP-H 2,5/1-M BK - Plug

3061937

<https://www.phoenixcontact.com/us/products/3061937>



ZBF 5,QR:FORTL.ZAHLEN - Zack Marker strip, flat

0808697

<https://www.phoenixcontact.com/us/products/0808697>



Zack Marker strip, flat, Strip, white, labeled, Printed vertically: consecutive numbers 1 ... 10, 11 ... 20, etc. up to 91 ... 100, mounting type: snapped, for terminal block width: 5 mm, lettering field size: 5.15 x 5.15 mm, Number of individual labels: 10

ZBF 5,LGS:GERADE ZAHLEN - Zack Marker strip, flat

0810821

<https://www.phoenixcontact.com/us/products/0810821>



Zack Marker strip, flat, Strip, white, labeled, printed horizontally: consecutive even numbers 2 ... 20, 22 ... 40, etc. up to 82 ... 100, mounting type: snapped, for terminal block width: 5 mm, lettering field size: 5.15 x 5.15 mm, Number of individual labels: 10

PP-H 2,5/1-M BK - Plug

3061937

<https://www.phoenixcontact.com/us/products/3061937>



ZBF 5,LGS:UNGERADE ZAHLEN - Zack Marker strip, flat

0810863

<https://www.phoenixcontact.com/us/products/0810863>

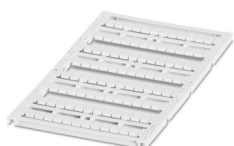


Zack Marker strip, flat, Strip, white, labeled, printed horizontally: Odd numbers 1 - 19, 21 - 39, etc. up to 81 - 99, mounting type: snapped, for terminal block width: 5 mm, lettering field size: 5.15 x 5.15 mm, Number of individual labels: 10

UC-TMF 5 - Marker for terminal blocks

0818153

<https://www.phoenixcontact.com/us/products/0818153>



Marker for terminal blocks, Sheet, white, unlabeled, can be labeled with: BLUEMARK ID COLOR, BLUEMARK ID, BLUEMARK CLED, PLOTMARK, CMS-P1-PLOTTER, mounting type: snapped, for terminal block width: 5.2 mm, lettering field size: 4.6 x 5.1 mm, Number of individual labels: 96

PP-H 2,5/1-M BK - Plug

3061937

<https://www.phoenixcontact.com/us/products/3061937>



UC-TMF 5 CUS - Marker for terminal blocks

0824638

<https://www.phoenixcontact.com/us/products/0824638>



Marker for terminal blocks, can be ordered: by sheet, white, labeled according to customer specifications, mounting type: snap into flat marker groove, for terminal block width: 5.2 mm, lettering field size: 4.6 x 5.1 mm, Number of individual labels: 96

UCT-TMF 5 - Marker for terminal blocks

0828744

<https://www.phoenixcontact.com/us/products/0828744>



Marker for terminal blocks, Sheet, white, unlabeled, can be labeled with: TOPMARK NEO, TOPMARK LASER, BLUEMARK ID COLOR, BLUEMARK ID, BLUEMARK CLED, THERMOMARK PRIME, THERMOMARK CARD 2.0, THERMOMARK CARD, mounting type: snapped, for terminal block width: 5.2 mm, lettering field size: 4.4 x 4.7 mm, Number of individual labels: 72

PP-H 2,5/1-M BK - Plug

3061937

<https://www.phoenixcontact.com/us/products/3061937>



UCT-TMF 5 CUS - Marker for terminal blocks

0829658

<https://www.phoenixcontact.com/us/products/0829658>



Marker for terminal blocks, can be ordered: by sheet, white, labeled according to customer specifications, mounting type: snap into flat marker groove, for terminal block width: 5.2 mm, lettering field size: 4.4 x 4.7 mm, Number of individual labels: 72

Phoenix Contact 2024 © - all rights reserved

<https://www.phoenixcontact.com>

Phoenix Contact USA
586 Fulling Mill Road
Middletown, PA 17057, United States
(+717) 944-1300
info@phoenixcon.com