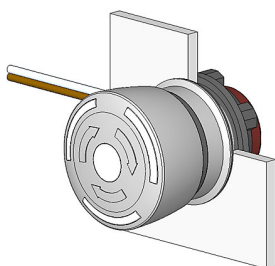


# EAO – Your Expert Partner for Human Machine Interfaces

## 84-6820.0040 - Stop switch complete grey

### 84-6820.0040 - Stop switch complete grey



*Attention: The preview is based on a sample product. This can differ from your current configuration.*

#### Mounting

Mounting cut-out	Ø 22,3 mm
Design	raised
Behind panel depth	13,5 mm

#### Front

Front dimension	Ø 32 mm
Front shape	round

#### Other Attributes

Weight	0,036 kg
--------	----------

#### Operating-/Indication part

Lens material	Plastic
Lens colour	grey
Lens profile	Mushroom
Lens optics	opaque
Lens illumination	non-illuminative

#### IP-Rating

Front protection	IP65
------------------	------

#### Connection Method

Terminal	Flat ribbon cable
----------	-------------------

#### Actuator

Switching action	Maintained
------------------	------------

#### Switching element

Switching system	Slow-make switching element
Contacts	1 NC
Switching voltage	250 V AC/DC
Switching current	5 A
Contact material	gold-plated silver

#### Illumination

LED colour	
------------	--

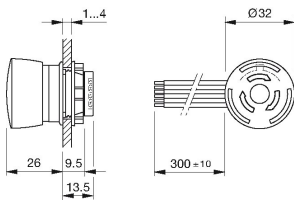
#### Function

Stop switch	
-------------	--

# EAO – Your Expert Partner for Human Machine Interfaces

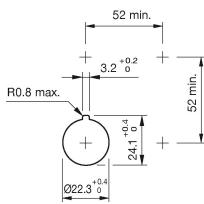
84-6820.0040 - Stop switch complete grey

## Dimensions

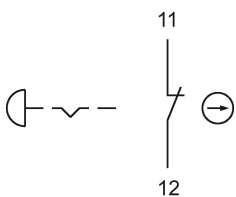


F1 = Flat ribbon cable

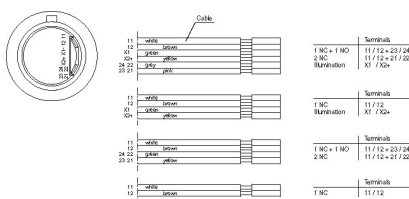
## Mounting cut-outs



## Wiring diagram



## Component layout



## Additional information

Twist to unlock clockwise

Position indication ring black

Standard version: Flat ribbon-cable length 300 mm or plug-in

terminal 2.8 x 0.5 mm

Other options on request: Customisation of flat ribbon-cable and connectors

## Legend

Contacts: NC = Normally closed