



Quality Products. Service Excellence.

Open Frame Wall Rack *RB-2PW Series*

Up to 200 lbs (91 kg) Weight Capacity



RACK BASICS®

A HAMMOND BRAND



Features

- The rails are constructed in 12-gauge steel while the while brackets are constructed in 14 gauge steel.
- EIA compliant 10-32 tapped rails with 19" mounting and rack unit indicators.
- Provides 18 inches of usable mounting depth.
 - An optional **RB-2PW-EXT** extender can be used to add up to 7" of usable mounting depth while maintaining the load capacity.
- Open-rear design can be installed over existing equipment.
- Knockdown design ships unassembled for easy handling and shipping protection.
- Includes starter pack of **SCREW1032-25** screws.
- 200 lbs (90.72 kg) **static load rating**.
- Finished in RAL9005 black powder paint. Complies with the Greenguard guidelines for indoor air quality.
- TAA-compliant for GSA Schedule purchases.
- RoHS Compliant.
- Manufactured in North America within an ISO 9001:2015 certified facility.

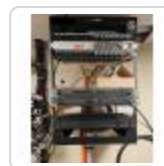
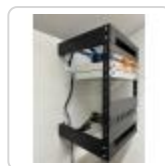


Need a different height? Purchase our 8U version and the desired height of our **URR Rack Rails** (Add 4U to the desired height). Note we only approve the weight capacity up to 20U.



This product is not designed nor intended to be used for non-wall mounted applications.

Gallery



Accessories

- Cable Managers
- Two Post Mounting Adjustable Shelf
- Two Post Mounting Clamping Shelf
- Hinged Clear Security Cover
- PDUs and Outlet Strips
- Rack Panels
- Universal Rack Shelf
- Two Post Mounting Keyboard & Equipment Shelf
- Adjustable Rack Mount DIN Rail Kit
- Ground Stud Kit

Part No.	Overall Dimensions			Rack Units	Mounting Dimensions			Weight Capacity
	Height	Width	Depth		Height	Width	Depth	
RB-2PW8	18.00	20.00	18.00	8U	14.00	19.00	18.00	200 lbs
RB-2PW12	28.50	20.00	18.00	12U	21.00	19.00	18.00	200 lbs
RB-2PW20	40.00	20.00	18.00	20U	35.00	19.00	18.00	175 lbs

Optional Extender Bracket

Part No.	Description
RB-2PW-EXT	Provides additional seven inches of mounting depth (18" to 25") while maintaining weight load capacity.

What's Inside the Box

Qty Included	Description	Replacement Part No.
1	Pair of Rack Rails	URR8U, URR12U, or URR20U
2	Top and Bottom Cover/Wall Brackets	
1	Assembly Instructions	
8	1/4-20 x 0.5in Screw For Assembly	
8	1/4-20 Kep Nut For Assembly	
8	10-32 x 0.75in Rack Screws For Assembly	SCREW1032-10
25	10-32 x 0.75in Rack Mounting Screws	SCREW1032-25

Data subject to change without notice

© 2024. Hammond Manufacturing Ltd. All rights reserved.