

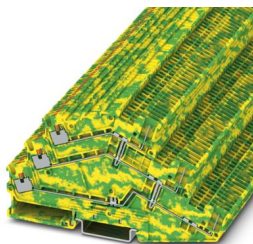
# PTS 1,5/S-3PE/3P - Ground terminal



1027884

<https://www.phoenixcontact.com/us/products/1027884>

Please be informed that the data shown in this PDF document is generated from our online catalog. Please find the complete data in the user documentation. Our general terms of use for downloads are valid.



Ground terminal, nominal current: 15 A, connection method: Push-in / plug connection, 1 level, Rated cross section: 1.5 mm<sup>2</sup>, cross section: 0.14 mm<sup>2</sup> - 1.5 mm<sup>2</sup>, mounting type: NS 35/7,5, NS 35/15, color: green-yellow

## Your advantages

- In addition to the testing option in the double function shaft, all terminal blocks provide an additional test pick-off
- The compact design and front connection enable wiring in a confined space
- The Push-in connection terminal blocks are characterized by the system features of the CLIPLINE complete system and by easy and tool-free wiring of conductors with ferrules or solid conductors
- Tested for railway applications

## Commercial data

Item number	1027884
Packing unit	50 pc
Minimum order quantity	50 pc
Sales key	BE22
Product key	BE2242
Catalog page	Page 280 (C-1-2019)
GTIN	4055626523804
Weight per piece (including packing)	16.708 g
Weight per piece (excluding packing)	16.708 g
Customs tariff number	85369010
Country of origin	PL

# PTS 1,5/S-3PE/3P - Ground terminal



1027884

<https://www.phoenixcontact.com/us/products/1027884>

## Technical data

### Product properties

Product type	Ground terminal block
Product family	PTS
Area of application	Railway industry
	Machine building
	Plant engineering
Number of connections	6
Number of rows	3

### Data management status

Article revision	00
------------------	----

### Insulation characteristics

Overvoltage category	III
Degree of pollution	3

### Electrical properties

Rated surge voltage	6 kV
Maximum power dissipation for nominal condition	0.56 W

### Connection data

Grounding foot	Yes
Number of connections per level	2
Nominal cross section	1.5 mm <sup>2</sup>

#### 1 level

Note	Please observe the current carrying capacity of the DIN rails.
Stripping length	8 mm ... 10 mm
Internal cylindrical gage	A1 / B1
Connection in acc. with standard	IEC 60947-7-2
Conductor cross section rigid	0.14 mm <sup>2</sup> ... 1.5 mm <sup>2</sup>
Cross section AWG	26 ... 16 (converted acc. to IEC)
Conductor cross section flexible	0.14 mm <sup>2</sup> ... 1.5 mm <sup>2</sup>
Conductor cross section, flexible [AWG]	26 ... 16 (converted acc. to IEC)
Conductor cross-section flexible (ferrule without plastic sleeve)	0.14 mm <sup>2</sup> ... 1.5 mm <sup>2</sup>
Flexible conductor cross section (ferrule with plastic sleeve)	0.14 mm <sup>2</sup> ... 1 mm <sup>2</sup> Using the AI-S 1-8 TQ ferrule, Item No. 1200293, is recommended
Nominal current	15 A
Nominal cross section	1.5 mm <sup>2</sup>

#### 1 level Connection cross sections directly pluggable

Conductor cross section rigid	0.25 mm <sup>2</sup> ... 1.5 mm <sup>2</sup>
Conductor cross-section flexible (ferrule without plastic sleeve)	0.34 mm <sup>2</sup> ... 1.5 mm <sup>2</sup>

# PTS 1,5/S-3PE/3P - Ground terminal



1027884

<https://www.phoenixcontact.com/us/products/1027884>

Flexible conductor cross section (ferrule with plastic sleeve)	0.34 mm <sup>2</sup> ... 1 mm <sup>2</sup>
--	--

## Dimensions

Width	3.5 mm
End cover width	0.8 mm
Height	119.5 mm
Depth	64.3 mm
Depth on NS 35/7,5	58.3 mm
Depth on NS 35/15	65.8 mm

## Material specifications

Color	green-yellow
Flammability rating according to UL 94	V0
Insulating material group	I
Insulating material	PA
Static insulating material application in cold	-60 °C
Temperature index of insulation material (DIN EN 60216-1 (VDE 0304-21))	130 °C
Relative insulation material temperature index (Elec., UL 746 B)	130 °C
Fire protection for rail vehicles (DIN EN 45545-2) R22	HL 1 - HL 3
Fire protection for rail vehicles (DIN EN 45545-2) R23	HL 1 - HL 3
Fire protection for rail vehicles (DIN EN 45545-2) R24	HL 1 - HL 3
Fire protection for rail vehicles (DIN EN 45545-2) R26	HL 1 - HL 3
Calorimetric heat release NFPA 130 (ASTM E 1354)	28 MJ/kg
Surface flammability NFPA 130 (ASTM E 162)	passed
Specific optical density of smoke NFPA 130 (ASTM E 662)	passed
Smoke gas toxicity NFPA 130 (SMP 800C)	passed

## Mechanical properties

### Mechanical data

Open side panel	Yes
-----------------	-----

## Environmental and real-life conditions

### Oscillation/broadband noise

Specification	DIN EN 50155 (VDE 0115-200):2018-05
Spectrum	Service life test category 1, class B, body mounted
Frequency	$f_1 = 5 \text{ Hz}$ to $f_2 = 150 \text{ Hz}$
ASD level	0.964 (m/s <sup>2</sup> )/Hz
Acceleration	0.58g
Test duration per axis	5 h
Test directions	X-, Y- and Z-axis
Result	Test passed

### Shocks

# PTS 1,5/S-3PE/3P - Ground terminal



1027884

<https://www.phoenixcontact.com/us/products/1027884>

Specification	DIN EN 50155 (VDE 0115-200):2018-05
Pulse shape	Half-sine
Acceleration	5g
Shock duration	30 ms
Number of shocks per direction	3
Test directions	X-, Y- and Z-axis (pos. and neg.)
Result	Test passed

## Ambient conditions

Ambient temperature (operation)	-60 °C (max. operating temperature see derating curve)
Ambient temperature (storage/transport)	-25 °C ... 60 °C (for a short time, no longer than 24 h, -60°C to +70°C)
Ambient temperature (assembly)	-5 °C ... 70 °C
Ambient temperature (actuation)	-5 °C ... 70 °C
Permissible humidity (operation)	20 % ... 90 %
Permissible humidity (storage/transport)	30 % ... 70 %

## Standards and regulations

Connection in acc. with standard	IEC 60947-7-2
----------------------------------	---------------

## Mounting

Mounting type	NS 35/7,5
	NS 35/15

# PTS 1,5/S-3PE/3P - Ground terminal

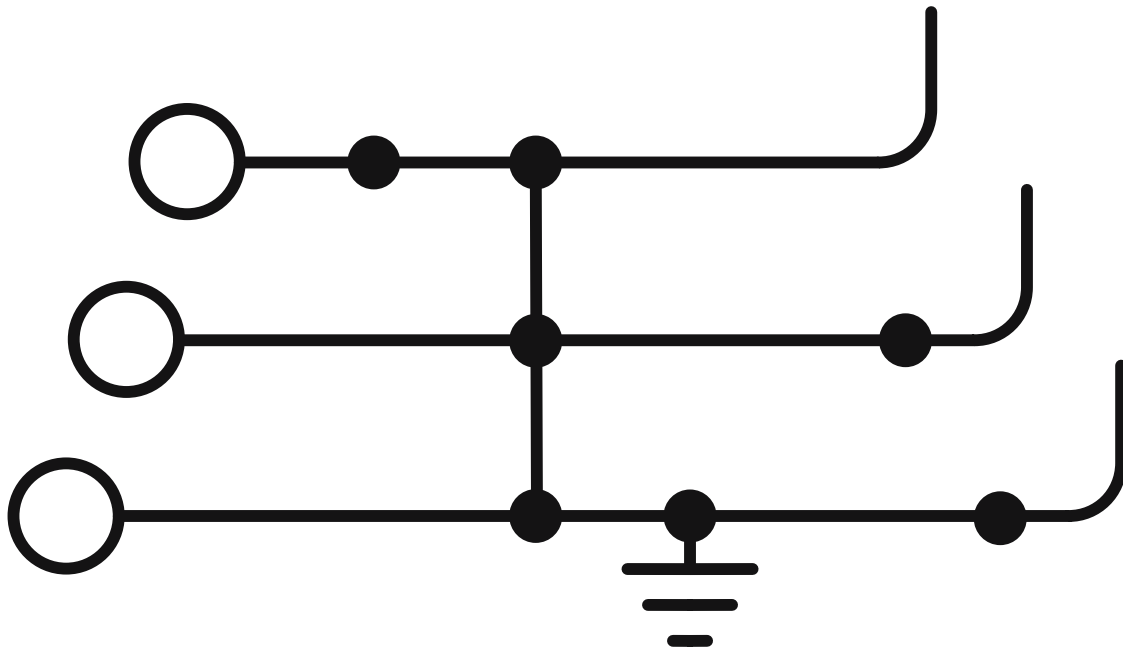
1027884

<https://www.phoenixcontact.com/us/products/1027884>



## Drawings

Circuit diagram



# PTS 1,5/S-3PE/3P - Ground terminal





1027884

<https://www.phoenixcontact.com/us/products/1027884>

## Approvals

To download certificates, visit the product detail page: <https://www.phoenixcontact.com/us/products/1027884>

 <b>CSA</b> Approval ID: 158887				
	Nominal voltage $U_N$	Nominal current $I_N$	Cross section AWG	Cross section $\text{mm}^2$
	-	-	26 - 14	-

 <b>cULus Recognized</b> Approval ID: E60425				
	Nominal voltage $U_N$	Nominal current $I_N$	Cross section AWG	Cross section $\text{mm}^2$
Use group B				
	-	-	26 - 14	-
Use group C				
	-	-	26 - 14	-

# PTS 1,5/S-3PE/3P - Ground terminal



1027884

<https://www.phoenixcontact.com/us/products/1027884>

## Classifications

### ECLASS

ECLASS-11.0	27141141
ECLASS-13.0	27250104

### ETIM

ETIM 9.0	EC000901
----------	----------

### UNSPSC

UNSPSC 21.0	39121400
-------------	----------

# PTS 1,5/S-3PE/3P - Ground terminal



1027884

<https://www.phoenixcontact.com/us/products/1027884>

## Environmental product compliance

EU RoHS	
Fulfills EU RoHS substance requirements	Yes, No exemptions
China RoHS	
Environment friendly use period (EFUP)	EFUP-E
	No hazardous substances above the limits
EU REACH SVHC	
REACH candidate substance (CAS No.)	No substance above 0.1 wt%



# PTS 1,5/S-3PE/3P - Ground terminal

1027884

<https://www.phoenixcontact.com/us/products/1027884>



## Accessories



Note: Applying some accessories below might limit this product.

### FBS 3-3,5 BU - Plug-in bridge

3213099

<https://www.phoenixcontact.com/us/products/3213099>



Plug-in bridge, pitch: 3.5 mm, number of positions: 3, color: blue

### FBS 4-3,5 BU - Plug-in bridge

3213109

<https://www.phoenixcontact.com/us/products/3213109>



Plug-in bridge, pitch: 3.5 mm, number of positions: 4, color: blue

## PTS 1,5/S-3PE/3P - Ground terminal

1027884

<https://www.phoenixcontact.com/us/products/1027884>



## FBS 5-3,5 BU - Plug-in bridge

3213112

<https://www.phoenixcontact.com/us/products/3213112>



Plug-in bridge, pitch: 3.5 mm, number of positions: 5, color: blue

---

## FBS 10-3,5 BU - Plug-in bridge

3213125

<https://www.phoenixcontact.com/us/products/3213125>



Plug-in bridge, pitch: 3.5 mm, number of positions: 10, color: blue

## PTS 1,5/S-3PE/3P - Ground terminal

1027884

<https://www.phoenixcontact.com/us/products/1027884>



## FBS 20-3,5 BU - Plug-in bridge

3213138

<https://www.phoenixcontact.com/us/products/3213138>



Plug-in bridge, pitch: 3.5 mm, number of positions: 20, color: blue

---

## FBS 2-3,5 - Plug-in bridge

3213014

<https://www.phoenixcontact.com/us/products/3213014>



Plug-in bridge, pitch: 3.5 mm, number of positions: 2, color: red

## PTS 1,5/S-3PE/3P - Ground terminal

1027884

<https://www.phoenixcontact.com/us/products/1027884>



## FBS 3-3,5 - Plug-in bridge

3213027

<https://www.phoenixcontact.com/us/products/3213027>



Plug-in bridge, pitch: 3.5 mm, number of positions: 3, color: red

---

## FBS 4-3,5 - Plug-in bridge

3213030

<https://www.phoenixcontact.com/us/products/3213030>



Plug-in bridge, pitch: 3.5 mm, number of positions: 4, color: red

## PTS 1,5/S-3PE/3P - Ground terminal

1027884

<https://www.phoenixcontact.com/us/products/1027884>



## FBS 5-3,5 - Plug-in bridge

3213043

<https://www.phoenixcontact.com/us/products/3213043>

Plug-in bridge, pitch: 3.5 mm, number of positions: 5, color: red



---

## FBS 10-3,5 - Plug-in bridge

3213056

<https://www.phoenixcontact.com/us/products/3213056>

Plug-in bridge, pitch: 3.5 mm, number of positions: 10, color: red



## PTS 1,5/S-3PE/3P - Ground terminal

1027884

<https://www.phoenixcontact.com/us/products/1027884>



## FBS 20-3,5 - Plug-in bridge

3213069

<https://www.phoenixcontact.com/us/products/3213069>



Plug-in bridge, pitch: 3.5 mm, number of positions: 20, color: red

---

## FBS 2-3,5 GY - Plug-in bridge

3213153

<https://www.phoenixcontact.com/us/products/3213153>



Plug-in bridge, pitch: 3.5 mm, number of positions: 2, color: gray

## PTS 1,5/S-3PE/3P - Ground terminal

1027884

<https://www.phoenixcontact.com/us/products/1027884>



## FBS 2-3,5 BU - Plug-in bridge

3213086

<https://www.phoenixcontact.com/us/products/3213086>



Plug-in bridge, pitch: 3.5 mm, number of positions: 2, color: blue

---

## FBS 3-3,5 GY - Plug-in bridge

3213167

<https://www.phoenixcontact.com/us/products/3213167>



Plug-in bridge, pitch: 3.5 mm, number of positions: 3, color: gray

## PTS 1,5/S-3PE/3P - Ground terminal

1027884

<https://www.phoenixcontact.com/us/products/1027884>



## FBS 4-3,5 GY - Plug-in bridge

3213180

<https://www.phoenixcontact.com/us/products/3213180>



Plug-in bridge, pitch: 3.5 mm, number of positions: 4, color: gray

---

## FBS 5-3,5 GY - Plug-in bridge

3213183

<https://www.phoenixcontact.com/us/products/3213183>



Plug-in bridge, pitch: 3.5 mm, number of positions: 5, color: gray



## PTS 1,5/S-3PE/3P - Ground terminal

1027884

<https://www.phoenixcontact.com/us/products/1027884>



## FBS 10-3,5 GY - Plug-in bridge

3213196

<https://www.phoenixcontact.com/us/products/3213196>



Plug-in bridge, pitch: 3.5 mm, number of positions: 10, color: gray

---

## FBS 20-3,5 GY - Plug-in bridge

3213206

<https://www.phoenixcontact.com/us/products/3213206>



Plug-in bridge, pitch: 3.5 mm, number of positions: 20, color: gray

## PTS 1,5/S-3PE/3P - Ground terminal

1027884

<https://www.phoenixcontact.com/us/products/1027884>




## FBS 50-3,5 - Plug-in bridge

3000706

<https://www.phoenixcontact.com/us/products/3000706>



Plug-in bridge, pitch: 3.5 mm, number of positions: 50, color: red

 Max. current carrying capacity: 17.5 A

---


## FBS 50-3,5 BU - Plug-in bridge

3000708

<https://www.phoenixcontact.com/us/products/3000708>



Plug-in bridge, pitch: 3.5 mm, number of positions: 50, color: blue

 Max. current carrying capacity: 17.5 A

## PTS 1,5/S-3PE/3P - Ground terminal

1027884

<https://www.phoenixcontact.com/us/products/1027884>



## FBS 50-3,5 GY - Plug-in bridge

3000707

<https://www.phoenixcontact.com/us/products/3000707>



Plug-in bridge, pitch: 3.5 mm, number of positions: 50, color: gray

 Max. current carrying capacity: 17.5 A

---

## GBS-ZB/26X6 - Group marker label for terminal marking

0809298

<https://www.phoenixcontact.com/us/products/0809298>



Group marking label, snaps onto terminal center for screw, spring-cage and quick connection terminal blocks, labeled with ESL 26x6 mm or EST 25x6 mm, in the foot part with Zack marker strip, length: 29 mm

## PTS 1,5/S-3PE/3P - Ground terminal

1027884

<https://www.phoenixcontact.com/us/products/1027884>



## D-PTS 1,5/S-3L/3P - End cover

1027887

<https://www.phoenixcontact.com/us/products/1027887>

End cover, depth: 58.1 mm, width: 0.8 mm, height: 119.3 mm, color: gray



---

## PC - Coding star

3040588

<https://www.phoenixcontact.com/us/products/3040588>

Coding star, 4-section, depth: 6 mm, width: 3 mm, height: 3 mm, color: red



## PTS 1,5/S-3PE/3P - Ground terminal

1027884

<https://www.phoenixcontact.com/us/products/1027884>



## Al-S 1 - 8 TQ - Ferrule

1200293

<https://www.phoenixcontact.com/us/products/1200293>



Ferrule, S-Slimline, sleeve length: 8 mm, color: turquoise

---

## NS 35/ 7,5 PERF 2000MM - DIN rail perforated

0801733

<https://www.phoenixcontact.com/us/products/0801733>



DIN rail perforated, Pack of 25 (50 m), acc. to EN 60715, material: Steel, galvanized, passivated with a thick layer, Standard profile, color: silver

## PTS 1,5/S-3PE/3P - Ground terminal

1027884

<https://www.phoenixcontact.com/us/products/1027884>



## NS 35/ 7,5 UNPERF 2000MM - DIN rail, unperforated

0801681

<https://www.phoenixcontact.com/us/products/0801681>



DIN rail, unperforated, Pack of 25 (50 m), acc. to EN 60715, material: Steel, galvanized, passivated with a thick layer, Standard profile, color: silver

---

## NS 35/ 7,5 WH PERF 2000MM - DIN rail perforated

1204119

<https://www.phoenixcontact.com/us/products/1204119>



DIN rail perforated, Pack of 25 (50 m), acc. to EN 60715, material: Steel, Galvanized, white passivated, Standard profile, color: silver

## PTS 1,5/S-3PE/3P - Ground terminal

1027884

<https://www.phoenixcontact.com/us/products/1027884>



## NS 35/ 7,5 WH UNPERF 2000MM-VPE 10 - DIN rail, unperforated

1204122

<https://www.phoenixcontact.com/us/products/1204122>



DIN rail, unperforated, Pack of 10 (20 m), acc. to EN 60715, material: Steel, Galvanized, white passivated, Standard profile, color: silver

---

## NS 35/ 7,5 AL UNPERF 2000MM - DIN rail, unperforated

0801704

<https://www.phoenixcontact.com/us/products/0801704>



DIN rail, unperforated, Pack of 25 (50 m), acc. to EN 60715, material: Aluminum, uncoated, Standard profile, color: silver

## PTS 1,5/S-3PE/3P - Ground terminal

1027884

<https://www.phoenixcontact.com/us/products/1027884>



## NS 35/ 7,5 ZN PERF 2000MM - DIN rail perforated

1206421

<https://www.phoenixcontact.com/us/products/1206421>



DIN rail perforated, Pack of 25 (50 m), acc. to EN 60715, material: Steel, galvanized, Standard profile, color: silver

---

## NS 35/ 7,5 ZN UNPERF 2000MM - DIN rail, unperforated

1206434

<https://www.phoenixcontact.com/us/products/1206434>



DIN rail, unperforated, Pack of 25 (50 m), acc. to EN 60715, material: Steel, galvanized, Standard profile, color: silver



## PTS 1,5/S-3PE/3P - Ground terminal

1027884

<https://www.phoenixcontact.com/us/products/1027884>



## NS 35/ 7,5 CU UNPERF 2000MM-VPE 10 - DIN rail, unperforated

0801762

<https://www.phoenixcontact.com/us/products/0801762>



DIN rail, unperforated, Pack of 10 (20 m), acc. to EN 60715, material: Copper, uncoated, Standard profile, color: copper-colored

---

## NS 35/ 7,5 CAP - End cap

1206560

<https://www.phoenixcontact.com/us/products/1206560>

DIN rail end piece, for DIN rail NS 35/7.5



## PTS 1,5/S-3PE/3P - Ground terminal

1027884

<https://www.phoenixcontact.com/us/products/1027884>



## NS 35/15 PERF 2000MM - DIN rail perforated

1201730

<https://www.phoenixcontact.com/us/products/1201730>



DIN rail perforated, Pack of 25 (50 m), similar to EN 60715, material: Steel, galvanized, passivated with a thick layer, Standard profile, color: silver

---

## NS 35/15 UNPERF 2000MM - DIN rail, unperforated

1201714

<https://www.phoenixcontact.com/us/products/1201714>



DIN rail, unperforated, Pack of 25 (50 m), similar to EN 60715, material: Steel, galvanized, passivated with a thick layer, Standard profile, color: silver

## PTS 1,5/S-3PE/3P - Ground terminal

1027884

<https://www.phoenixcontact.com/us/products/1027884>



## NS 35/15 WH PERF 2000MM - DIN rail perforated

0806602

<https://www.phoenixcontact.com/us/products/0806602>



DIN rail perforated, Pack of 25 (50 m), similar to EN 60715, material: Steel, Galvanized, white passivated, Standard profile, color: white

---

## NS 35/15 WH UNPERF 2000MM-VPE 10 - DIN rail, unperforated

1204135

<https://www.phoenixcontact.com/us/products/1204135>



DIN rail, unperforated, Pack of 10 (20 m), similar to EN 60715, material: Steel, Galvanized, white passivated, Standard profile, color: silver

## PTS 1,5/S-3PE/3P - Ground terminal

1027884

<https://www.phoenixcontact.com/us/products/1027884>



## NS 35/15 AL UNPERF 2000MM - DIN rail, unperforated

1201756

<https://www.phoenixcontact.com/us/products/1201756>



DIN rail, unperforated, similar to EN 60715, material: Aluminum, uncoated, Standard profile, color: silver

---

## NS 35/15 ZN PERF 2000MM - DIN rail perforated

1206599

<https://www.phoenixcontact.com/us/products/1206599>



DIN rail perforated, Pack of 25 (50 m), similar to EN 60715, material: Steel, galvanized, Standard profile, color: silver

## PTS 1,5/S-3PE/3P - Ground terminal

1027884

<https://www.phoenixcontact.com/us/products/1027884>



## NS 35/15 ZN UNPERF 2000MM - DIN rail, unperforated

1206586

<https://www.phoenixcontact.com/us/products/1206586>



DIN rail, unperforated, Pack of 25 (50 m), similar to EN 60715, material: Steel, galvanized, Standard profile, color: silver

---

## NS 35/15 CU UNPERF 2000MM-VPE 10 - DIN rail, unperforated

1201895

<https://www.phoenixcontact.com/us/products/1201895>



DIN rail, unperforated, Pack of 10 (20 m), similar to EN 60715, material: Copper, uncoated, Standard profile, color: copper-colored

## PTS 1,5/S-3PE/3P - Ground terminal

1027884

<https://www.phoenixcontact.com/us/products/1027884>

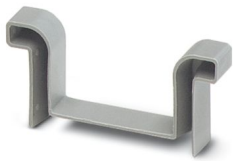


## NS 35/15 CAP - End cap

1206573

<https://www.phoenixcontact.com/us/products/1206573>

DIN rail end piece, for DIN rail NS 35/15



---

## NS 35/15-2,3 UNPERF 2000MM-VPE 10 - DIN rail, unperforated

1201798

<https://www.phoenixcontact.com/us/products/1201798>



DIN rail, unperforated, Pack of 10 (20 m), acc. to EN 60715, material: Steel, galvanized, passivated with a thick layer, Standard profile 2.3 mm, color: silver

## PTS 1,5/S-3PE/3P - Ground terminal

1027884

<https://www.phoenixcontact.com/us/products/1027884>



## ZB 3,5:UNBEDRUCKT - Zack marker strip

0829414

<https://www.phoenixcontact.com/us/products/0829414>



Zack marker strip, Strip, white, unlabeled, can be labeled with: PLOTMARK, CMS-P1-PLOTTER, mounting type: snapped, for terminal block width: 3.5 mm, lettering field size: 3.5 x 10.5 mm, Number of individual labels: 10

---

## ZB 3,5 CUS - Zack marker strip

0829415

<https://www.phoenixcontact.com/us/products/0829415>



Zack marker strip, can be ordered: Strip, white, labeled according to customer specifications, mounting type: snap into tall marker groove, for terminal block width: 3.5 mm, lettering field size: 3.5 x 10.5 mm, Number of individual labels: 10

## PTS 1,5/S-3PE/3P - Ground terminal

1027884

<https://www.phoenixcontact.com/us/products/1027884>



## ZB 3,5,LGS:FORTL.ZAHLEN - Zack marker strip

0801404

<https://www.phoenixcontact.com/us/products/0801404>



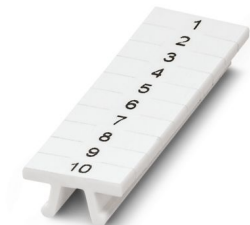
Zack marker strip, Strip, white, labeled, printed horizontally: consecutive numbers 1 ... 10, 11 ... 20, etc. up to 91 ... 100, mounting type: snapped, for terminal block width: 3.5 mm, lettering field size: 3.5 x 10.5 mm, Number of individual labels: 10

---

## ZB 3,5,QR:FORT.ZAHLEN - Zack marker strip

0801405

<https://www.phoenixcontact.com/us/products/0801405>



Zack marker strip, Strip, white, labeled, Printed vertically: consecutive numbers 1 ... 10, 11 ... 20, etc. up to 91 ... 100, mounting type: snapped, for terminal block width: 3.5 mm, lettering field size: 3.5 x 10.5 mm, Number of individual labels: 10



## PTS 1,5/S-3PE/3P - Ground terminal

1027884

<https://www.phoenixcontact.com/us/products/1027884>



## UCT-TM 3,5 - Marker for terminal blocks

0829484

<https://www.phoenixcontact.com/us/products/0829484>



Marker for terminal blocks, Sheet, white, unlabeled, can be labeled with: TOPMARK NEO, TOPMARK LASER, BLUEMARK ID COLOR, BLUEMARK ID, BLUEMARK CLED, THERMOMARK PRIME, THERMOMARK CARD 2.0, THERMOMARK CARD, mounting type: snapped, for terminal block width: 3.5 mm, lettering field size: 2.95 x 10.5 mm, Number of individual labels: 102

---

## UCT-TM 3,5 CUS - Marker for terminal blocks

0829581

<https://www.phoenixcontact.com/us/products/0829581>



Marker for terminal blocks, can be ordered: by sheet, white, labeled according to customer specifications, mounting type: snap into tall marker groove, for terminal block width: 3.5 mm, lettering field size: 2.95 x 10.5 mm, Number of individual labels: 102

## PTS 1,5/S-3PE/3P - Ground terminal

1027884

<https://www.phoenixcontact.com/us/products/1027884>



### GBS 3,5-25X3,5 - Group marker label for terminal marking

0830290

<https://www.phoenixcontact.com/us/products/0830290>



Group marking label, snaps into terminal center for push-in terminal blocks ...1.  
5/S,  
Lettering field 25 x 3.5 mm, pitch 3.5 mm, labeled with EML (24 x 3)R

---

### GBS 3,5-25X12 - Group marker label for terminal marking

0830292

<https://www.phoenixcontact.com/us/products/0830292>



Group marking label, snaps into terminal center for push-in terminal blocks ...1.  
5/S,  
Lettering field 25 x 12 mm, pitch 3.5 mm, labeled with EML (25.4 x 12.7)R

## PTS 1,5/S-3PE/3P - Ground terminal

1027884

<https://www.phoenixcontact.com/us/products/1027884>



## MPS-MT - Test plug

0201744

<https://www.phoenixcontact.com/us/products/0201744>



Test plug, with solder connection up to 1 mm<sup>2</sup> conductor cross section, number of positions: 1, color: gray

---

## MPS-IH WH - Insulating sleeve

0201663

<https://www.phoenixcontact.com/us/products/0201663>

Insulating sleeve, color: white



## PTS 1,5/S-3PE/3P - Ground terminal

1027884

<https://www.phoenixcontact.com/us/products/1027884>



## MPS-IH RD - Insulating sleeve

0201676

<https://www.phoenixcontact.com/us/products/0201676>

Insulating sleeve, color: red



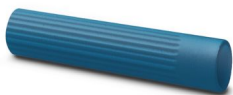
---

## MPS-IH BU - Insulating sleeve

0201689

<https://www.phoenixcontact.com/us/products/0201689>

Insulating sleeve, color: blue



## PTS 1,5/S-3PE/3P - Ground terminal

1027884

<https://www.phoenixcontact.com/us/products/1027884>



### MPS-IH YE - Insulating sleeve

0201692

<https://www.phoenixcontact.com/us/products/0201692>

Insulating sleeve, color: yellow



---

### MPS-IH GN - Insulating sleeve

0201702

<https://www.phoenixcontact.com/us/products/0201702>

Insulating sleeve, color: green



## PTS 1,5/S-3PE/3P - Ground terminal

1027884

<https://www.phoenixcontact.com/us/products/1027884>



## MPS-IH GY - Insulating sleeve

0201728

<https://www.phoenixcontact.com/us/products/0201728>

Insulating sleeve, color: gray



---

## MPS-IH BK - Insulating sleeve

0201731

<https://www.phoenixcontact.com/us/products/0201731>

Insulating sleeve, color: black



## PTS 1,5/S-3PE/3P - Ground terminal

1027884

<https://www.phoenixcontact.com/us/products/1027884>



## TMT (EX9,5)R - Marker for terminal blocks

0828295

<https://www.phoenixcontact.com/us/products/0828295>



Marker for terminal blocks, Roll, white, unlabeled, can be labeled with: THERMOMARK E.300 (D)/600 (D), THERMOMARK ROLL 2.0, THERMOMARK ROLL, THERMOMARK ROLL X1, THERMOMARK ROLLMASTER 300/600, THERMOMARK X1.2, mounting type: snapped, snap into tall marker groove, for terminal block width: 30000 mm, lettering field size: 9.5 x 50000 mm, Number of individual labels: 1

---

## US-TM 100 - Marker for terminal blocks

0829255

<https://www.phoenixcontact.com/us/products/0829255>



Marker for terminal blocks, Card, white, unlabeled, can be labeled with: BLUEMARK ID COLOR, BLUEMARK ID, THERMOMARK PRIME, THERMOMARK CARD 2.0, THERMOMARK CARD, mounting type: snapped, lettering field size: 104 x 9.8 mm, Number of individual labels: 13

## PTS 1,5/S-3PE/3P - Ground terminal

1027884

<https://www.phoenixcontact.com/us/products/1027884>



## PS-3,5 - Test plug

3031010

<https://www.phoenixcontact.com/us/products/3031010>



Test plug, Modular test plug, number of positions: 1, color: red

---

## DP PS-3,5 - Spacer plate

3031011

<https://www.phoenixcontact.com/us/products/3031011>



Spacer plate, depth: 33.5 mm, width: 3.5 mm, height: 15.9 mm, number of positions: 1, color: red



## PTS 1,5/S-3PE/3P - Ground terminal

1027884

<https://www.phoenixcontact.com/us/products/1027884>



## PS-3,5/E - Test plug

3031012

<https://www.phoenixcontact.com/us/products/3031012>



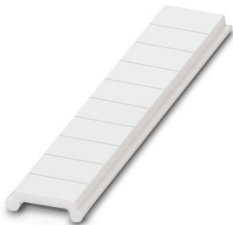
Test plug, Individual test plug, number of positions: 1, color: red

---

## ZBF 3,5:UNBEDRUCKT - Zack Marker strip, flat

0829392

<https://www.phoenixcontact.com/us/products/0829392>



Zack Marker strip, flat, Strip, white, unlabeled, can be labeled with: PLOTMARK, CMS-P1-PLOTTER, mounting type: snapped, for terminal block width: 3.5 mm, lettering field size: 3.5 x 5.2 mm, Number of individual labels: 10

## PTS 1,5/S-3PE/3P - Ground terminal

1027884

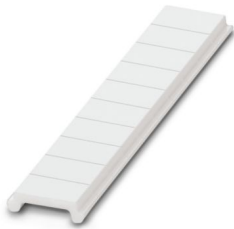
<https://www.phoenixcontact.com/us/products/1027884>



## ZBF 3,5 CUS - Zack Marker strip, flat

0829394

<https://www.phoenixcontact.com/us/products/0829394>



Zack Marker strip, flat, can be ordered: Strip, white, labeled according to customer specifications, mounting type: snap into flat marker groove, for terminal block width: 3.5 mm, lettering field size: 3.5 x 5.2 mm, Number of individual labels: 10

---

## ZBF 3,5,LGS:FORTL.ZAHLEN - Zack Marker strip, flat

0801406

<https://www.phoenixcontact.com/us/products/0801406>



Zack Marker strip, flat, Strip, white, labeled, printed horizontally: consecutive numbers 1 ... 10, 11 ... 20, etc. up to 91 ... 100, mounting type: snapped, for terminal block width: 3.5 mm, lettering field size: 5.15 x 3.5 mm, Number of individual labels: 10

## PTS 1,5/S-3PE/3P - Ground terminal

1027884

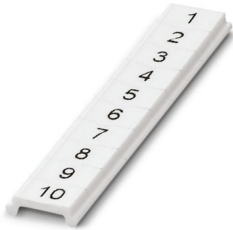
<https://www.phoenixcontact.com/us/products/1027884>



## ZBF 3,5,QR:FORTL.ZAHLEN - Zack Marker strip, flat

0801407

<https://www.phoenixcontact.com/us/products/0801407>



Zack Marker strip, flat, Strip, white, labeled, Printed vertically: consecutive numbers 1 ... 10, 11 ... 20, etc. up to 91 ... 100, mounting type: snapped, for terminal block width: 3.5 mm, lettering field size: 5.15 x 3.5 mm, Number of individual labels: 10

---

## UCT-TMF 3,5 - Marker for terminal blocks

0829486

<https://www.phoenixcontact.com/us/products/0829486>



Marker for terminal blocks, Sheet, white, unlabeled, can be labeled with: TOPMARK NEO, TOPMARK LASER, BLUEMARK ID COLOR, BLUEMARK ID, BLUEMARK CLED, THERMOMARK PRIME, THERMOMARK CARD 2.0, THERMOMARK CARD, mounting type: snapped, for terminal block width: 3.5 mm, lettering field size: 2.7 x 4.7 mm, Number of individual labels: 108

## PTS 1,5/S-3PE/3P - Ground terminal

1027884

<https://www.phoenixcontact.com/us/products/1027884>



## UCT-TMF 3,5 CUS - Marker for terminal blocks

0829644

<https://www.phoenixcontact.com/us/products/0829644>



Marker for terminal blocks, can be ordered: by sheet, white, labeled according to customer specifications, mounting type: snap into flat marker groove, for terminal block width: 3.5 mm, lettering field size: 2.7 x 4.7 mm, Number of individual labels: 108

---

## PP-H 1,5/S/1 - Plug

3212484

<https://www.phoenixcontact.com/us/products/3212484>



Plug, nom. voltage: 500 V, nominal current: 17.5 A, number of connections: 1, number of positions: 1, connection method: Push-in connection, 1 level, Rated cross section: 1.5 mm<sup>2</sup>, cross section: 0.14 mm<sup>2</sup> - 1.5 mm<sup>2</sup>, mounting type: Plug-in mounting, color: gray

# PTS 1,5/S-3PE/3P - Ground terminal



1027884

<https://www.phoenixcontact.com/us/products/1027884>

## PP-H 1,5/S/1 BU - Plug

3212497

<https://www.phoenixcontact.com/us/products/3212497>



Plug, nom. voltage: 500 V, nominal current: 17.5 A, number of connections: 1, number of positions: 1, connection method: Push-in connection, 1 level, Rated cross section: 1.5 mm<sup>2</sup>, cross section: 0.14 mm<sup>2</sup> - 1.5 mm<sup>2</sup>, color: blue

---

## PP-H 1,5/S/1 GNYE - Plug

3212507

<https://www.phoenixcontact.com/us/products/3212507>



Plug, nom. voltage: 500 V, nominal current: 17.5 A, number of connections: 1, number of positions: 1, connection method: Push-in connection, 1 level, Rated cross section: 1.5 mm<sup>2</sup>, cross section: 0.14 mm<sup>2</sup> - 1.5 mm<sup>2</sup>, color: green-yellow

# PTS 1,5/S-3PE/3P - Ground terminal

1027884

<https://www.phoenixcontact.com/us/products/1027884>



## PP-H 1,5/S/2 - Plug

3212510

<https://www.phoenixcontact.com/us/products/3212510>



Plug, nom. voltage: 500 V, nominal current: 17.5 A, number of connections: 2, number of positions: 2, connection method: Push-in connection, 1 level, Rated cross section: 1.5 mm<sup>2</sup>, cross section: 0.14 mm<sup>2</sup> - 1.5 mm<sup>2</sup>, mounting type: Plug-in mounting, color: gray

---

## PP-H 1,5/S/3 - Plug

3212523

<https://www.phoenixcontact.com/us/products/3212523>



Plug, nom. voltage: 500 V, nominal current: 17.5 A, number of connections: 3, number of positions: 3, connection method: Push-in connection, 1 level, Rated cross section: 1.5 mm<sup>2</sup>, cross section: 0.14 mm<sup>2</sup> - 1.5 mm<sup>2</sup>, mounting type: Plug-in mounting, color: gray

# PTS 1,5/S-3PE/3P - Ground terminal

1027884

<https://www.phoenixcontact.com/us/products/1027884>



## PP-H 1,5/S/4 - Plug

3212536

<https://www.phoenixcontact.com/us/products/3212536>



Plug, nom. voltage: 500 V, nominal current: 17.5 A, number of connections: 4, number of positions: 4, connection method: Push-in connection, 1 level, Rated cross section: 1.5 mm<sup>2</sup>, cross section: 0.14 mm<sup>2</sup> - 1.5 mm<sup>2</sup>, mounting type: Plug-in mounting, color: gray

---

## PP-H 1,5/S/5 - Plug

3212549

<https://www.phoenixcontact.com/us/products/3212549>



Plug, nom. voltage: 500 V, nominal current: 17.5 A, number of connections: 5, number of positions: 5, connection method: Push-in connection, 1 level, Rated cross section: 1.5 mm<sup>2</sup>, cross section: 0.14 mm<sup>2</sup> - 1.5 mm<sup>2</sup>, mounting type: Plug-in mounting, color: gray

# PTS 1,5/S-3PE/3P - Ground terminal

1027884

<https://www.phoenixcontact.com/us/products/1027884>



## PP-H 1,5/S/6 - Plug

3212552

<https://www.phoenixcontact.com/us/products/3212552>



Plug, nom. voltage: 500 V, nominal current: 17.5 A, number of connections: 6, number of positions: 6, connection method: Push-in connection, 1 level, Rated cross section: 1.5 mm<sup>2</sup>, cross section: 0.14 mm<sup>2</sup> - 1.5 mm<sup>2</sup>, mounting type: Plug-in mounting, color: gray

---

## PP-H 1,5/S/7 - Plug

3212565

<https://www.phoenixcontact.com/us/products/3212565>



Plug, nom. voltage: 500 V, nominal current: 17.5 A, number of connections: 7, number of positions: 7, connection method: Push-in connection, 1 level, Rated cross section: 1.5 mm<sup>2</sup>, cross section: 0.14 mm<sup>2</sup> - 1.5 mm<sup>2</sup>, color: gray



# PTS 1,5/S-3PE/3P - Ground terminal

1027884

<https://www.phoenixcontact.com/us/products/1027884>



## PP-H 1,5/S/8 - Plug

3212578

<https://www.phoenixcontact.com/us/products/3212578>



Plug, nom. voltage: 500 V, nominal current: 17.5 A, number of connections: 8, number of positions: 8, connection method: Push-in connection, 1 level, Rated cross section: 1.5 mm<sup>2</sup>, cross section: 0.14 mm<sup>2</sup> - 1.5 mm<sup>2</sup>, mounting type: Plug-in mounting, color: gray

---

## PP-H 1,5/S/9 - Plug

3212581

<https://www.phoenixcontact.com/us/products/3212581>



Plug, nom. voltage: 500 V, nominal current: 17.5 A, number of connections: 9, number of positions: 9, connection method: Push-in connection, 1 level, Rated cross section: 1.5 mm<sup>2</sup>, cross section: 0.14 mm<sup>2</sup> - 1.5 mm<sup>2</sup>, color: gray

# PTS 1,5/S-3PE/3P - Ground terminal

1027884

<https://www.phoenixcontact.com/us/products/1027884>



## PP-H 1,5/S/10 - Plug

3212594

<https://www.phoenixcontact.com/us/products/3212594>



Plug, nom. voltage: 500 V, nominal current: 17.5 A, number of connections: 10, number of positions: 10, connection method: Push-in connection, 1 level, Rated cross section: 1.5 mm<sup>2</sup>, cross section: 0.14 mm<sup>2</sup> - 1.5 mm<sup>2</sup>, color: gray

---

## PP-H 1,5/S/11 - Plug

3212604

<https://www.phoenixcontact.com/us/products/3212604>



Plug, nom. voltage: 500 V, nominal current: 17.5 A, number of connections: 11, number of positions: 11, connection method: Push-in connection, 1 level, Rated cross section: 1.5 mm<sup>2</sup>, cross section: 0.14 mm<sup>2</sup> - 1.5 mm<sup>2</sup>, color: gray

# PTS 1,5/S-3PE/3P - Ground terminal

1027884

<https://www.phoenixcontact.com/us/products/1027884>



## PP-H 1,5/S/12 - Plug

3212617

<https://www.phoenixcontact.com/us/products/3212617>



Plug, nom. voltage: 500 V, nominal current: 17.5 A, number of connections: 12, number of positions: 12, connection method: Push-in connection, 1 level, Rated cross section: 1.5 mm<sup>2</sup>, cross section: 0.14 mm<sup>2</sup> - 1.5 mm<sup>2</sup>, color: gray

---

## PP-H 1,5/S/13 - Plug

3212620

<https://www.phoenixcontact.com/us/products/3212620>



Plug, nom. voltage: 500 V, nominal current: 17.5 A, number of connections: 13, number of positions: 13, connection method: Push-in connection, 1 level, Rated cross section: 1.5 mm<sup>2</sup>, cross section: 0.14 mm<sup>2</sup> - 1.5 mm<sup>2</sup>, color: gray

# PTS 1,5/S-3PE/3P - Ground terminal

1027884

<https://www.phoenixcontact.com/us/products/1027884>



## PP-H 1,5/S/14 - Plug

3212633

<https://www.phoenixcontact.com/us/products/3212633>



Plug, nom. voltage: 500 V, nominal current: 17.5 A, number of connections: 14, number of positions: 14, connection method: Push-in connection, 1 level, Rated cross section: 1.5 mm<sup>2</sup>, cross section: 0.14 mm<sup>2</sup> - 1.5 mm<sup>2</sup>, color: gray

---

## PP-H 1,5/S/15 - Plug

3212646

<https://www.phoenixcontact.com/us/products/3212646>



Plug, nom. voltage: 500 V, nominal current: 17.5 A, number of connections: 15, number of positions: 15, connection method: Push-in connection, 1 level, Rated cross section: 1.5 mm<sup>2</sup>, cross section: 0.14 mm<sup>2</sup> - 1.5 mm<sup>2</sup>, color: gray

# PTS 1,5/S-3PE/3P - Ground terminal

1027884

<https://www.phoenixcontact.com/us/products/1027884>



## PP-H 1,5/S/1-L - Plug

3212659

<https://www.phoenixcontact.com/us/products/3212659>



Plug, nom. voltage: 500 V, nominal current: 17.5 A, number of connections: 1, number of positions: 1, connection method: Push-in connection, 1 level, Rated cross section: 1.5 mm<sup>2</sup>, cross section: 0.14 mm<sup>2</sup> - 1.5 mm<sup>2</sup>, color: gray

---

## PP-H 1,5/S/1-L BU - Plug

3212662

<https://www.phoenixcontact.com/us/products/3212662>



Plug, nom. voltage: 500 V, nominal current: 17.5 A, number of connections: 1, number of positions: 1, connection method: Push-in connection, 1 level, Rated cross section: 1.5 mm<sup>2</sup>, cross section: 0.14 mm<sup>2</sup> - 1.5 mm<sup>2</sup>, color: blue

# PTS 1,5/S-3PE/3P - Ground terminal

1027884

<https://www.phoenixcontact.com/us/products/1027884>



## PP-H 1,5/S/1-L GNYE - Plug

3212675

<https://www.phoenixcontact.com/us/products/3212675>



Plug, nom. voltage: 500 V, nominal current: 17.5 A, number of connections: 1, number of positions: 1, connection method: Push-in connection, 1 level, Rated cross section: 1.5 mm<sup>2</sup>, cross section: 0.14 mm<sup>2</sup> - 1.5 mm<sup>2</sup>, color: green-yellow

---

## PP-H 1,5/S/1-M - Plug

3212688

<https://www.phoenixcontact.com/us/products/3212688>



Plug, nom. voltage: 500 V, nominal current: 17.5 A, number of connections: 1, number of positions: 1, connection method: Push-in connection, 1 level, Rated cross section: 1.5 mm<sup>2</sup>, cross section: 0.14 mm<sup>2</sup> - 1.5 mm<sup>2</sup>, color: gray

# PTS 1,5/S-3PE/3P - Ground terminal



1027884

<https://www.phoenixcontact.com/us/products/1027884>

## PP-H 1,5/S/1-M BU - Plug

3212691

<https://www.phoenixcontact.com/us/products/3212691>



Plug, nom. voltage: 500 V, nominal current: 17.5 A, number of connections: 1, number of positions: 1, connection method: Push-in connection, 1 level, Rated cross section: 1.5 mm<sup>2</sup>, cross section: 0.14 mm<sup>2</sup> - 1.5 mm<sup>2</sup>, color: blue

---

## PP-H 1,5/S/1-M GNYE - Plug

3212701

<https://www.phoenixcontact.com/us/products/3212701>



Plug, nom. voltage: 500 V, nominal current: 17.5 A, number of connections: 1, number of positions: 1, connection method: Push-in connection, 1 level, Rated cross section: 1.5 mm<sup>2</sup>, cross section: 0.14 mm<sup>2</sup> - 1.5 mm<sup>2</sup>, color: green-yellow

# PTS 1,5/S-3PE/3P - Ground terminal

1027884

<https://www.phoenixcontact.com/us/products/1027884>



## PP-H 1,5/S/1-R - Plug

3212714

<https://www.phoenixcontact.com/us/products/3212714>



Plug, nom. voltage: 500 V, nominal current: 17.5 A, number of connections: 1, number of positions: 1, connection method: Push-in connection, 1 level, Rated cross section: 1.5 mm<sup>2</sup>, cross section: 0.14 mm<sup>2</sup> - 1.5 mm<sup>2</sup>, color: gray

---

## PP-H 1,5/S/1-R BU - Plug

3212727

<https://www.phoenixcontact.com/us/products/3212727>



Plug, nom. voltage: 500 V, nominal current: 17.5 A, number of connections: 1, number of positions: 1, connection method: Push-in connection, 1 level, Rated cross section: 1.5 mm<sup>2</sup>, cross section: 0.14 mm<sup>2</sup> - 1.5 mm<sup>2</sup>, color: blue



## PTS 1,5/S-3PE/3P - Ground terminal

1027884

<https://www.phoenixcontact.com/us/products/1027884>



## PP-H 1,5/S/1-R GNYE - Plug

3212730

<https://www.phoenixcontact.com/us/products/3212730>



Plug, nom. voltage: 500 V, nominal current: 17.5 A, number of connections: 1, number of positions: 1, connection method: Push-in connection, 1 level, Rated cross section: 1.5 mm<sup>2</sup>, cross section: 0.14 mm<sup>2</sup> - 1.5 mm<sup>2</sup>, color: green-yellow

---

## PZ 1,5/S/2 - Strain relief

3212918

<https://www.phoenixcontact.com/us/products/3212918>



Strain relief, width: 6.8 mm, height: 44.5 mm, number of positions: 2, color: black

## PTS 1,5/S-3PE/3P - Ground terminal

1027884

<https://www.phoenixcontact.com/us/products/1027884>



## PRZ 1,5/S - Latching

3212905

<https://www.phoenixcontact.com/us/products/3212905>



Latching, length: 59 mm, color: orange

---

## PR 1,5/S/2 - Latching

3212895

<https://www.phoenixcontact.com/us/products/3212895>



Latching, width: 6.8 mm, height: 28.9 mm, number of positions: 2, color: orange

---

## PTS 1,5/S-3PE/3P - Ground terminal

1027884

<https://www.phoenixcontact.com/us/products/1027884>



## PR 1,5/S - Latching

3212882

<https://www.phoenixcontact.com/us/products/3212882>



Latching, width: 3.3 mm, height: 28.9 mm, number of positions: 1, color: orange

---

## SZF 0-0,4X2,5 - Screwdriver

1204504

<https://www.phoenixcontact.com/us/products/1204504>



Actuation tool, for ST terminal blocks, also suitable for use as a bladed screwdriver, size: 0.4 x 2.5 x 75 mm, 2-component grip, with non-slip grip

## PTS 1,5/S-3PE/3P - Ground terminal

1027884

<https://www.phoenixcontact.com/us/products/1027884>



## ST-BW 0 - Actuation tool

1200135

<https://www.phoenixcontact.com/us/products/1200135>

Actuation tool, for all 1.5 mm<sup>2</sup> spring cages from PT 1,5/S and FT 1,5/S



## PROJECT COMPLETE - Software

1050453

<https://www.phoenixcontact.com/us/products/1050453>



Intuitive planning and marking software for configuring terminal strips and for professional marking of marking materials for terminal blocks, conductors, cables, devices, and systems. The software is available for download

Phoenix Contact 2024 © - all rights reserved

<https://www.phoenixcontact.com>

Phoenix Contact USA  
586 Fulling Mill Road  
Middletown, PA 17057, United States  
(+717) 944-1300  
[info@phoenixcon.com](mailto:info@phoenixcon.com)