



Summary

[Request a quote](#)

[Catalog](#)

Gender	Standard
Locking system	Push-pull
Jacket cable outside diameter [mm]	4.00 - 5.20 mm
Size	1P
Series	REDEL P - Push-Pull

https://www.lemo.com/int_en/solutions/redel/redel-p-push-pull/pla-752-ug.html

LEMO products and services are provided "as is". LEMO makes no warranties or representations with regard to LEMO product & services or use of them, express, implied or statutory, including for accuracy, completeness, or security. The user is fully responsible for his products and applications using LEMO components.

Technical details

Electrical Configuration

Gender	Standard
--------	----------

Form & Material

Shell style / Model id	PL - Collet for REDEL 1P series
Housing material	PSU (Polysulfone), gray
Locking system	Push-pull
Keying	3 keys (alpha=42, gamma=30, plug: male contacts, receptacle: female contacts)
Weight	0.54 g

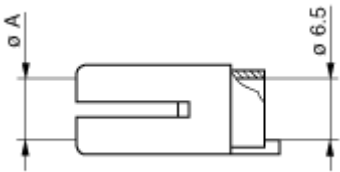
Environment

Technical domain	Energy and Industrial, Medical, Test and Measurement, Transportation, Aerospace and UAV
Environmental sealing (IP rating)	IP50
Temperature range	-50°C / +150°C

Cable fixation

Cable termination protection	Standard back nut (no additional protection)
Jacket cable outside diameter [mm]	4.00 - 5.20 mm

Drawings



Dimensions

A	
mm.	5.2
in.	0.2

https://www.lemo.com/int_en/solutions/redel/redel-p-push-pull/pla-752-ug.html

LEMO products and services are provided “as is”. LEMO makes no warranties or representations with regard to LEMO product & services or use of them, express, implied or statutory, including for accuracy, completeness, or security. The user is fully responsible for his products and applications using LEMO components.