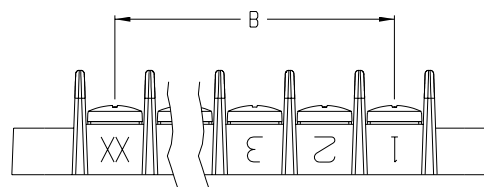
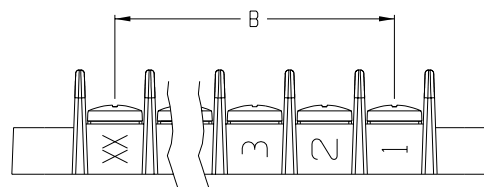


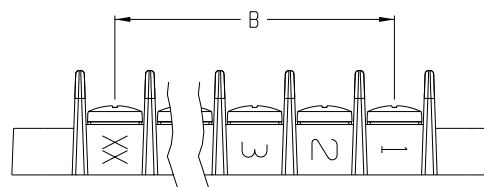
OPTION -11A



OPTION -11B



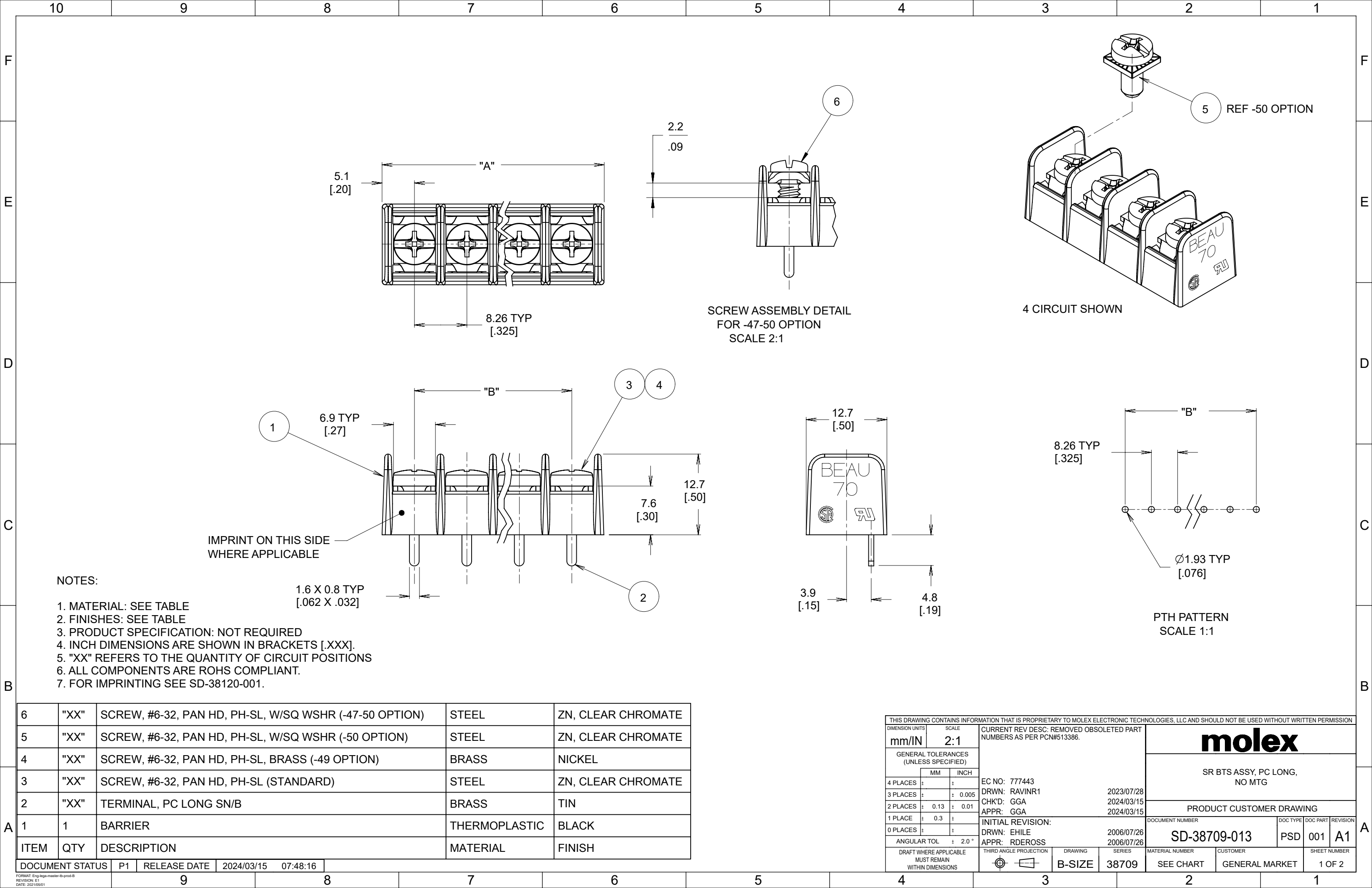
OPTION -11C



OPTION -110

1. ALL BEAU TERMINAL STRIPS MAY BE IMPRINTED ON THE SIDE OF THE STRIPS.
2. IMPRINTING ON BOTH SIDES IS ALSO AVAILABLE, EXCEPT FOR SERIES 60, 69 AND 75. THESE CLOSED-SIDE STRIPS MAY BE IMPRINTED ON THE OPEN SIDE AND/OR ON THE TOP OF THE CLOSED SIDE (SEE SD-38120-002 FOR TOP IMPRINTING OPTIONS).
3. IMPRINTING CHARACTER HEIGHT IS .070 FOR SERIES 10 AND 60, AND .135 FOR ALL OTHERS.
4. "XX" REFERS TO THE NUMBER OF CIRCUITS.
5. MOUNTING ENDS SHOWN. IMPRINTING OPTIONS ARE SIMILAR FOR PRODUCT WITHOUT MOUNTING ENDS.

10	9	8	7	6	5	4	3	2	1
----	---	---	---	---	---	---	---	---	---



6	"XX"	SCREW, #6-32, PAN HD, PH-SL, W/SQ WSHR (-47-50 OPTION)	STEEL	ZN, CLEAR CHROMATE
5	"XX"	SCREW, #6-32, PAN HD, PH-SL, W/SQ WSHR (-50 OPTION)	STEEL	ZN, CLEAR CHROMATE
4	"XX"	SCREW, #6-32, PAN HD, PH-SL, BRASS (-49 OPTION)	BRASS	NICKEL
3	"XX"	SCREW, #6-32, PAN HD, PH-SL (STANDARD)	STEEL	ZN, CLEAR CHROMATE
2	"XX"	TERMINAL, PC LONG SN/B	BRASS	TIN
1	1	BARRIER	THERMOPLASTIC	BLACK
ITEM	QTY	DESCRIPTION	MATERIAL	FINISH

DOCUMENT STATUS	P1	RELEASE DATE	2024/03/15	07:48:16
-----------------	----	--------------	------------	----------

THIS DRAWING CONTAINS INFORMATION THAT IS PROPRIETARY TO MOLEX ELECTRONIC TECHNOLOGIES, LLC AND SHOULD NOT BE USED WITHOUT WRITTEN PERMISSION															
DIMENSION UNITS		SCALE		CURRENT REV DESC: REMOVED OBSOLETE PART NUMBERS AS PER PCN#513386.					<div>molex</div> <div>SR BTS ASSY, PC LONG, NO MTG</div>						
mm/IN		2:1													
GENERAL TOLERANCES (UNLESS SPECIFIED)				EC NO: 777443 DRWN: RAVINR1 2023/07/28 CHK'D: GGA 2024/03/15 APPR: GGA 2024/03/15											
	MM		INCH												
4 PLACES	±		±												
3 PLACES	±		± 0.005												
2 PLACES	±	0.13	± 0.01												
1 PLACE	±	0.3	±												
0 PLACES	±														
ANGULAR TOL				± 2.0 °		PRODUCT CUSTOMER DRAWING									
DRAFT WHERE APPLICABLE MUST REMAIN WITHIN DIMENSIONS				THIRD ANGLE PROJECTION		DRAWING		SERIES		DOCUMENT NUMBER		DOC TYPE	DOC PART	REVISION	
										SD-38709-013		PSD	001	A1	
						B-SIZE		38709		MATERIAL NUMBER		CUSTOMER		SHEET NUMBER	
										SEE CHART		GENERAL MARKET		1 OF 2	

molex

SR BTS ASSY, PC LONG,
NO MTG

PRODUCT CUSTOMER DRAWING

DOCUMENT NUMBER	DOC TYPE	DOC PART	REVISION
SD-38709-013	PSD	001	A1

NO. OF CIRCUITS "XX"	DIM. "A"		DIM. "B"		ASSEMBLY MATERIAL NO. (-C-19 OPTION)	ASSEMBLY MATERIAL NO. (-C-19-50 OPTION)	ASSEMBLY MATERIAL NO. (-C-19-10A OPTION)
	mm	INCH	mm	INCH			
4	34.9	1.38	24.77	0.975	---	387090083	---
8	67.9	2.68	57.79	2.275	387090360	---	387090493

THIS DRAWING CONTAINS INFORMATION THAT IS PROPRIETARY TO MOLEX ELECTRONIC TECHNOLOGIES, LLC AND SHOULD NOT BE USED WITHOUT WRITTEN PERMISSION

DIMENSION UNITS

mm/IN

SCALE

2:1

GENERAL TOLERANCES
(UNLESS SPECIFIED)

	MM	INCH
4 PLACES	±	±
3 PLACES	±	± 0.005
2 PLACES	± 0.13	± 0.01
1 PLACE	± 0.3	±
0 PLACES	±	±
ANGULAR TOL	± 2.0 °	

DRAFT WHERE APPLICABLE
MUST REMAIN
WITHIN DIMENSIONS

THIRD ANGLE PROJECTION

DRAWING

B-SIZE

SERIES

38709

CURRENT REV DESC: REMOVED OBSOLETE PART
NUMBERS AS PER PCN#513386.

EC NO: 777443

DRWN: RAVINR1

CHK'D: GGA

APPR: GGA

2023/07/28

2024/03/15

2024/03/15

INITIAL REVISION:

DRWN: EHILE

APPR: RDEROSS

2006/07/26

2006/07/26

DOCUMENT NUMBER

SD-38709-013

DOC TYPE

PSD

DOC PART

001

REVISION

A1

MATERIAL NUMBER

SEE CHART

CUSTOMER

GENERAL MARKET

SHEET NUMBER

2 OF 2

PRODUCT CUSTOMER DRAWING

SR BTS ASSY, PC LONG,
NO MTG

molex

DOCUMENT STATUS

P1

RELEASE DATE

2024/03/15 07:48:16

9

8

7

6

5

4

3

2

1