

## Asymmetrical TVS Diode for Extended Common-Mode RS-485

### DESCRIPTION

The RSM712 transient voltage suppressor (TVS) diode is designed for asymmetrical (12V to -7V) protection in multi-point data transmission standard RS-485 applications. The RSM712 may be used to protect devices from transient voltages resulting from electrostatic discharge (ESD), electrical fast transients (EFT), and lightning.

The RSM712 features 400 Watts ( $t_p=8/20\mu s$ ) of power handling capability to accommodate the higher transient voltage levels which may be expected in extended common mode applications. This provides higher equipment reliability and eliminates the "guess work" required when using zener diodes that are not rated to handle such transient conditions.

The integrated design aids in reducing voltage over-shoot associated with trace inductance. The low clamping voltage of the RSM712 minimizes the stress on the protected transceiver. The SOT-23 package allows flexibility in the design of "crowded" circuit boards.

### ORDERING INFORMATION

- ✧ Device: RSM712
- ✧ Package: SOT-23
- ✧ Marking: 712 or C72
- ✧ Material: Halogen free
- ✧ Packing: Tape & Reel
- Quantity per reel: 3,000pcs

### FEATURES

- ✧ 400 watts peak pulse power ( $t_p=8/20\mu s$ )
- ✧ Transient protection for asymmetrical data lines to
  - IEC 61000-4-2 (ESD)  $\pm 15kV$ (air),  $\pm 8kV$ (contact)
  - IEC 61000-4-4 (EFT) 40A (5/50ns)
  - IEC 61000-4-5 (Lightning) 12A (8/20 $\mu s$ )
- ✧ Protects two +12V to -7V lines
- ✧ Low capacitance
- ✧ Low leakage current
- ✧ Low clamping voltage
- ✧ Solid-state silicon avalanche technology
- ✧ RoHS compliant
- ✧ P/N suffix V means AEC-Q101 qualified, e.g: RSM712V

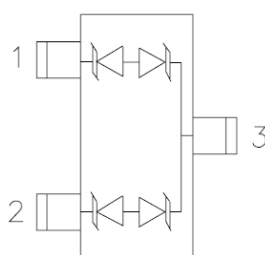
### MACHANICAL DATA

- ✧ SOT-23 package
- ✧ Flammability Rating: UL 94V-0
- ✧ Terminal: Matte tin plated.
- ✧ Packaging: Tape and Reel
- ✧ High temperature soldering guaranteed: 260°C/10s
- ✧ Reel size: 7 inch

### APPLICATIONS

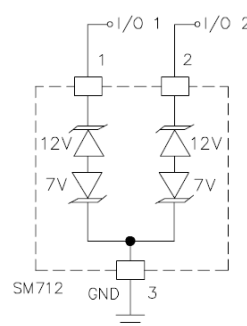
- ✧ Protection of RS-485 transceivers with extended common-mode range
- ✧ Security systems
- ✧ Automatic Teller Machines
- ✧ HFC systems
- ✧ Networks

### PIN CONFIGURATION&SCHEMATIC



**SOT23 (Top View)**

### CIRCUIT DIAGRAM



**ABSOLUTE MAXIMUM RATING (Tamb=25°C, unless otherwise specified)**

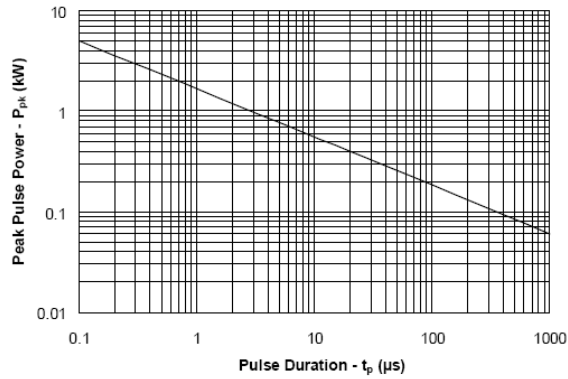
Symbol	Parameter	Value	Units
P <sub>PP</sub>	Peak Pulse Power (8/20μs)	400	W
I <sub>PP</sub>	Peak Pulse Current (8/20μs)	17	A
V <sub>ESD</sub>	ESD per IEC 61000-4-2 (Air) ESD per IEC 61000-4-2 (Contact)	±15 ±8	kV
T <sub>OPT</sub>	Operating Temperature	-55/+150	°C
T <sub>STG</sub>	Storage Temperature	-55/+150	°C

**ELECTRICAL CHARACTERISTICS (Tamb=25°C, unless otherwise specified)**

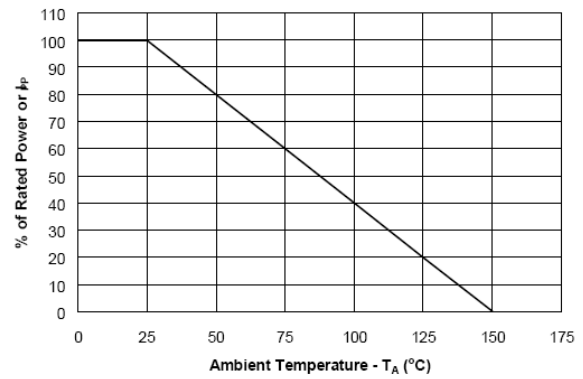
Symbol	Parameter	Test Condition	Pin 1 to 3 and Pin 2 to 3 (12V) TVS			Pin 3 to 1 and Pin 3 to 2 (7V TVS)			Units
			Min	Typ	Max	Min	Typ	Max	
V <sub>RWM</sub>	Reverse Working Voltage	Pin 3 to 1 or Pin 2 to 1			12			7	V
V <sub>BR</sub>	Reverse Breakdown Voltage	I <sub>T</sub> = 1mA	13.3			7.5			V
I <sub>R</sub>	Reverse Leakage Current	V <sub>R</sub> = V <sub>RWM</sub>			1			20	μA
V <sub>C1</sub>	Clamping Voltage 1	I <sub>PP</sub> = 5A, t <sub>p</sub> = 8/20μs			20			10	V
V <sub>C2</sub>	Clamping Voltage 2	I <sub>PP</sub> = 17A, t <sub>p</sub> = 8/20μs			26			12	V
C <sub>J1</sub>	Junction Capacitance 1	V <sub>R</sub> = 0V, f = 1MHz			75			75	pF
C <sub>J2</sub>	Junction Capacitance 2	V <sub>R</sub> = V <sub>RWM</sub> , f = 1MHz		45			45		pF

## RATING AND CHARACTERISTICS CURVES (RSM712)

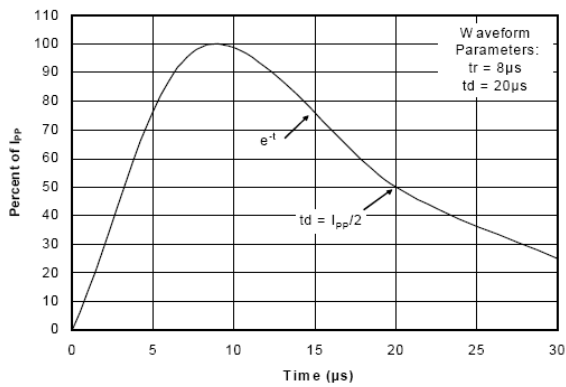
Non-Repetitive Peak Pulse Power vs. Pulse Time



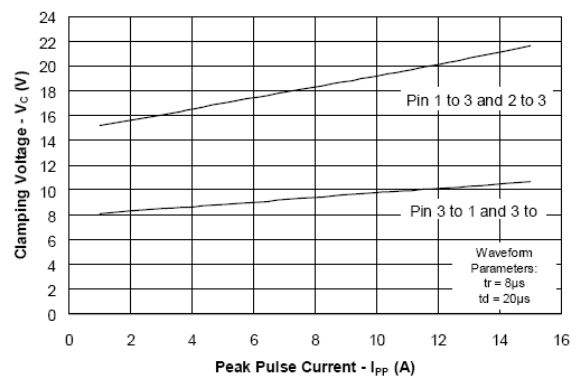
Power Derating Curve



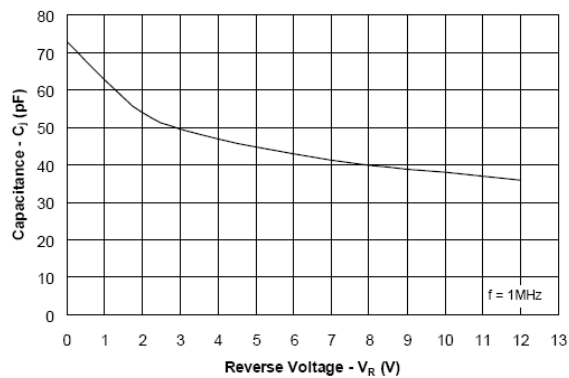
Pulse Waveform



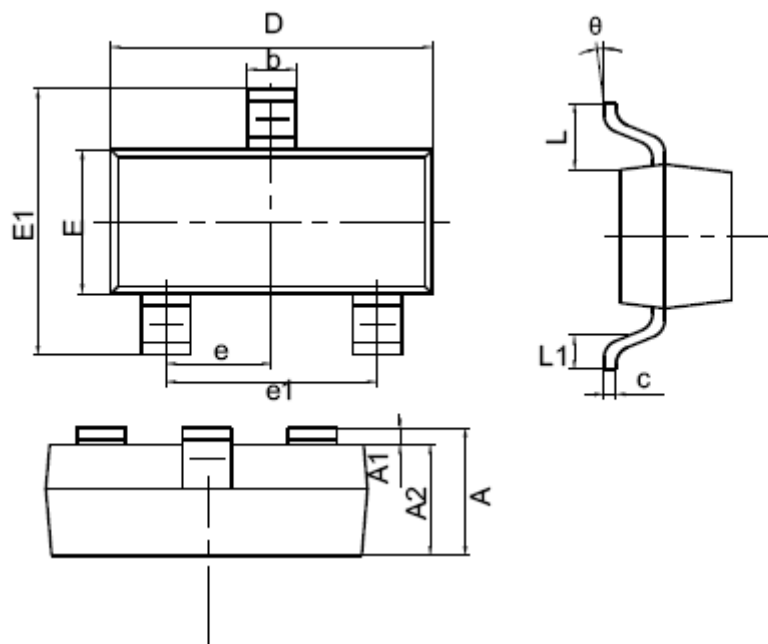
Clamping Voltage vs. Peak Pulse Current



Capacitance vs. Reverse Voltage



## SOT-23 PACKAGE OUTLINE DIMENSIONS



symbol	Dimensions in Millimeters		Dimensions in Inches	
	Min.	Max.	Min.	Max.
A	0.900	1.150	0.035	0.045
A1	0.000	0.100	0.000	0.004
A2	0.900	1.050	0.035	0.041
b	0.300	0.500	0.012	0.020
c	0.080	0.150	0.003	0.006
D	2.800	3.000	0.110	0.118
E	1.200	1.400	0.047	0.055
E1	2.250	2.550	0.089	0.100
e	0.950REF.		0.037REF.	
e1	1.800	2.000	0.071	0.079
L	0.550REF		0.022REF	
L1	0.300	0.500	0.012	0.020
θ	0°	8°	0°	8°

## DISCLAIMER NOTICE

Rectron Inc reserves the right to make changes without notice to any product specification herein, to make corrections, modifications, enhancements or other changes. Rectron Inc or anyone on its behalf assumes no responsibility or liability for any errors or inaccuracies. Data sheet specifications and its information contained are intended to provide a product description only. "Typical" parameters which may be included on RECTRON data sheets and/ or specifications can and do vary in different applications and actual performance may vary over time. Rectron Inc does not assume any liability arising out of the application or use of any product or circuit.

Rectron products are not designed, intended or authorized for use in medical, life-saving implant or other applications intended for life-sustaining or other related applications where a failure or malfunction of component or circuitry may directly or indirectly cause injury or threaten a life without expressed written approval of Rectron Inc. Customers using or selling Rectron components for use in such applications do so at their own risk and shall agree to fully indemnify Rectron Inc and its subsidiaries harmless against all claims, damages and expenditures.