

## Illuminated pushbutton Ø 22 mm silver contact

82-6551.1124



<https://eao.com/p/82-6551.1124>

Your product:

---



82-6551.1124

Illuminated pushbutton Ø  
22 mm silver contact

#### FRONT

Front dimension:	Ø 25 mm
Front bezel shape:	flush
Front form:	round
Front bezel material:	Aluminium

#### MOUNTING

Mounting cut-out:	Ø 22 mm
Mounting type:	Panel mounting

#### OPERATING-/INDICATION PART

Lens colour:	Nature
Lens shape:	flush
Lens optics:	opaque
Shape of illumination:	Ring
Lens illumination:	illuminative
Lens material:	Aluminium
Illumination colour:	Blue

#### ELECTRICAL CHARACTERISTICS

Rated insulation voltage $U_i$ :	250 V
Rated Operational Voltage $U_e$ :	250 VAC
Contacts:	1 C

<b>Pollution degree:</b>	2, according to EN IEC 60947-1		
<b>Electrical lifetime:</b>	50 000 cycles of operation		
<b>Operation current:</b>	7 mA		
<b>Electric strength:</b>	1500 VAC, 50 Hz 1 minute between life terminals and ground		
<b>Operating voltage:</b>	24 V AC/DC		
<b>Thermal current I<sub>th</sub>:</b>	5 A		
<b>Switching voltage and switching current:</b>	according to IEC 60947-5-1 (Silver contacts) Service categorie AC-15 Voltage 24 VAC 35 VAC 110 VAC 220 VAC Switch rating DC service categorie DC-13 (Silver contacts) Voltage 24 VDC 35 VDC 110 VDC 220 VDC	Current 1 A 1 A (M12 versio 1 A 0.5 A  Current 0.7 A 0.5 A (M12 vers 0.2 A 0.1 A	
	according to UL 508 (Silver contacts) cosφ 0,75 ... 0,8 Voltage 120 VAC 240 VAC 24 VAC	Current 5 A 3 A 1 A	

## MECHANICAL CHARACTERISTIC

<b>Mechanical lifetime:</b>	1 Mio. cycles of operation
<b>Terminal:</b>	Soldering terminal, 2.8 x 0.5 mm
<b>Operating force:</b>	4 N ... 7 N
<b>Tightening torque:</b>	0.5 ... 0.6 Nm
<b>Weight:</b>	0.018 kg
<b>Operating Travel:</b>	ca. 3 mm
<b>Switching system:</b>	Snap-action switching element
<b>Contact material:</b>	Silver
<b>Switching action:</b>	Momentary

## AMBIENT CONDITION

<b>Storage temperature:</b>	– 40 °C ... + 80 °C
<b>IP front protection:</b>	IP65, IP67
<b>Vibration resistance:</b>	

10 ... 500 Hz, amplitude 1.5 mm p-p according to IEC 60068-2-6

**Operating temperature:** - 30 °C ... + 70 °C

**Shock resistance:** Max. 500 m / s<sup>2</sup> as per IEC 60068-2-27

**Climate resistance:** Damp heat, 21 days according to IEC 60512-11

## CERTIFICATE

**Conformities:** CE, 2011 / 65 / EC (RoHS), 2014 / 35 / EU (LVD)

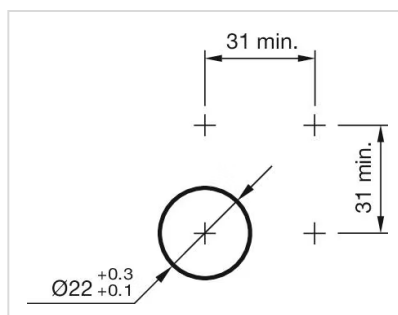
**Approbations:** CB, CCC, C UL, UL

## OTHER

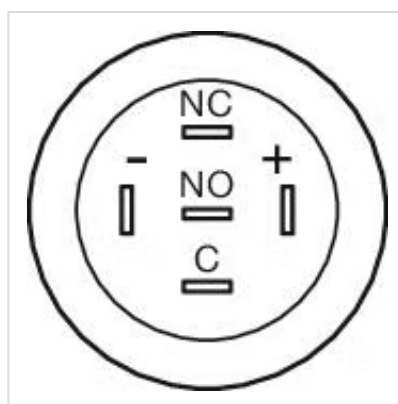
**Short Description:** Illuminated pushbutton Ø 22 mm silver contact, Momentary, 24 V AC/DC, 1 C, Soldering terminal, 2.8 x 0.5 mm, round, Aluminium, Blue, Nature

**Kind of illumination:** Single-LED

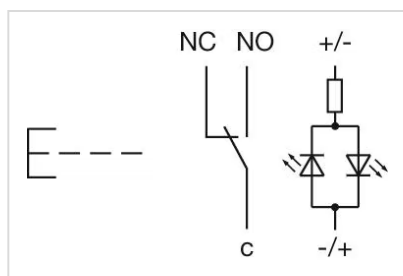
**Mounting cut-outs:**



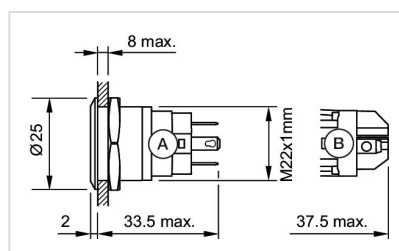
**Component layouts:**



**Wiring diagrams:**



**Dimension drawings:**



A = Solder terminal  
B = Screw terminal