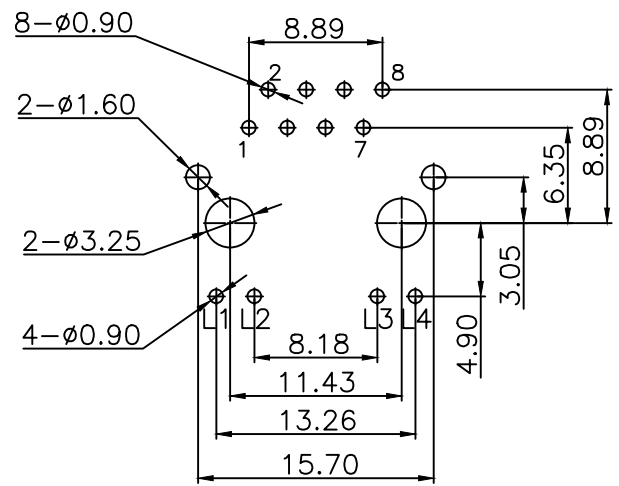
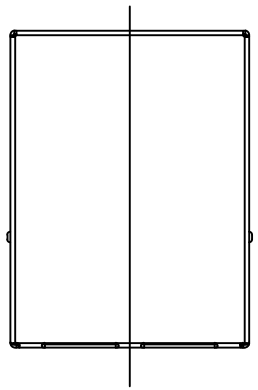
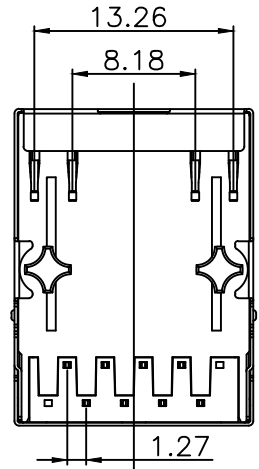
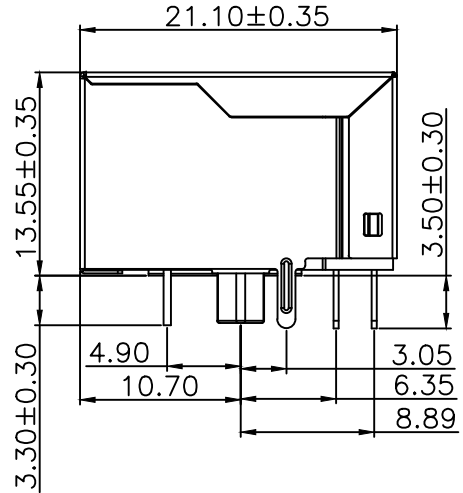
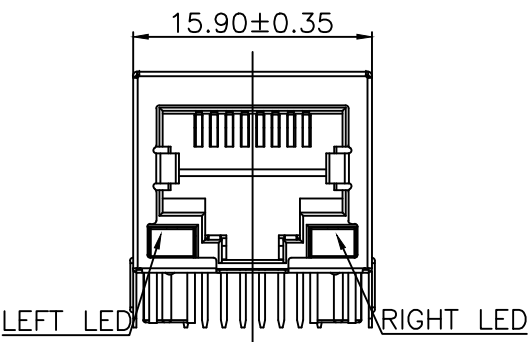


F
E
D
C
B
A

123456789

REV.	LOCAS.	DESCRIPTION	DRAWN	DATE
A	NEW	BATCH PRODUCTION INITIAL RELEASE.	Joan.Zhao	2025.02.27



Recommended PCB Layout
(Tolerance:±0.05)

- 1.Material:
- 1.1 Housing: PBT UL94V-0 Black.
Insert: PBT UL94V-0 Black.
 - 1.2 Shell: Stainless steel ,SUS 201.
 - 1.3 RJ45 Terminal:Phosphor Bronze(C5191) T=0.35mm
Plating:6u" Gold Plated On Contact Area,
80u" ~120u" Tin Plated On Solder Area,
30u" ~50u" Ni Underplated Overall.
 - 1.4 Tail Terminal: Brass(C2680) T=0.35mm,
Plating: 80u" ~120u" Tin Plated Over,
30u" ~50u" Ni Underplated Overall.
- 2.Environmental requirements:
- 2.1 Lead-free process,compliant RoHS.

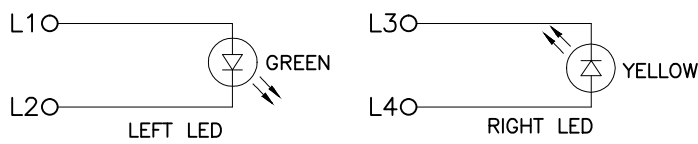
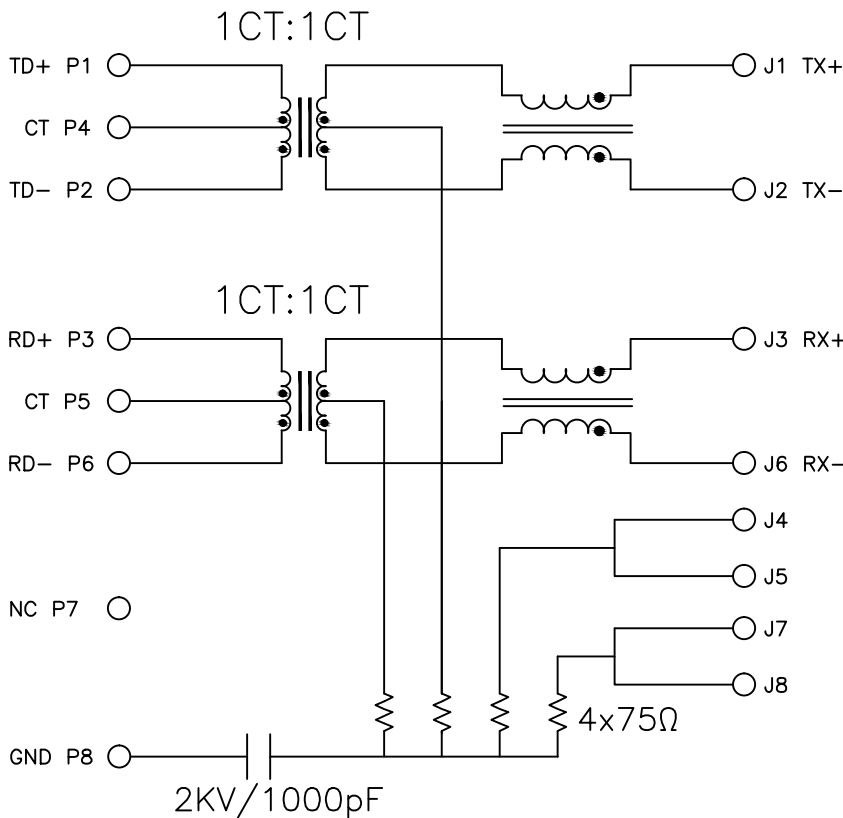
广州托克马斯电子有限公司					GENERAL TOLERANCE		DESIGNED: Joan.Zhao	DATE: 2025.02.27	DWG. NO.	TITLE. A10-RJ45 1x1 Dip Tab Down 10/100 Base With LED 6u" NS
					X.*±5.0°	X.±0.38	CHECKED: Joan.Zhao	DATE: 2025.02.27	HR911105	
					.X*±3.0°	.X±0.30		DATE: 2025.02.27	PART NO.	
REV.	UNIT.	SCALE.	PAGE.		.XX*±2.0°	.XX±0.25	APPROVED: Sunny.F		DATE: 2025.02.27	
A	mm	1:1	1/2		.XXX*±1.0°	.XXX±0.15				

123456789

F
E
D
C
B
A

PCB CONNECTIONS

RJ45 CONNECTIONS



Emitting Color	$\lambda_p(\text{nm})$	$V_f@I_f=20\text{mA}$
Green	565	1.8–2.5V
YELLOW	585	1.8–2.5V

- 3.Electrical Specification @25°C:
- 3.1 Inductance: 350uH Min With 8mA DC bias.
 - 3.2 Insertion loss :
 - 1–100MHZ –1dB max.
 - 3.3 Return loss :
 - 1–10MHZ –20dB min.
 - 10–30MHZ –16dB min.
 - 30–60MHZ –12dB min.
 - 60–80MHZ –10dB min.
 - 3.4 Common Mode Rejection:1–150MHZ –20dB min.
 - 3.5 Cross Talk:1–100MHZ –30dB min.
- 4.Operating and Storage Temperature:
- 4.1 Operating Temperature : –40°C to +85°C.
 - 4.2 Storage Temperature : –40°C to +85°C.
- 5.Wave soldering peak temperature:260°C.

REV.	LOCAS.	DESCRIPTION	DRAWN	DATE
A	NEW	BATCH PRODUCTION INITIAL RELEASE.	Joan.Zhao	2025.02.27

广州托克马斯电子有限公司

GENERAL TOLERANCE	
X.*±5.0°	X.±0.38
.X.*±3.0°	.X±0.30
.XX.*±2.0°	.XX±0.25
.XXX.*±1.0°	.XXX±0.15

DESIGNED: Joan.Zhao	DATE: 2025.02.27
CHECKED: Joan.Zhao	DATE: 2025.02.27
APPROVED: Sunny.F	DATE: 2025.02.27

DWG. NO.
HR911105
PART NO.
HR911105

TITLE.
A10–RJ45 1x1 Dip Tab Down 10/100 Base With LED 6u" NS

F
E
D
C
B
A

1 2 3 4 5 6 7 8 9