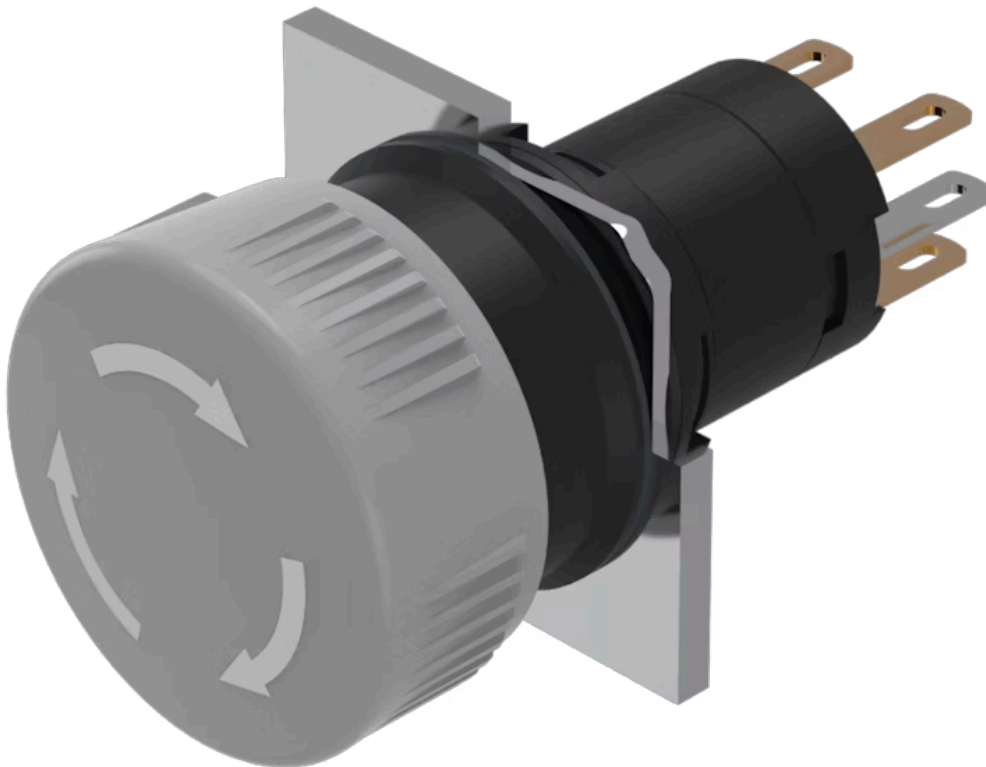


Actuator

51-
253.0228

Distribution by
DigiKey

DigiKey



<https://digikey.eao.com/p/51-253.0228>

Your product:



51-253.0228 Actuator

FRONT

Front dimension: Ø 24,5 mm

MOUNTING

Design: raised

OPERATING-/INDICATION PART

Lens shape: mushroom-head

Lens illumination: non illuminative

Lens material: Plastic

Lens colour: Grey

Lens optics: opaque

ELECTRICAL CHARACTERISTICS

Contacts: 1 NC / 1 NO

Switching voltage and switching current: 250 VAC, 5 A (ohmic)
24 VDC, 2 A (inductive, L:R = 30 ms)

MECHANICAL CHARACTERISTIC

Mechanical lifetime: 100 000 cycles of operation

Switching action: Maintained

Switching system: Snap-action switching element

Switching system: Self-cleaning, double-break snap action switching system, 1 normally closed and 1 normally open contact per element.

Operating force:	18 ... 21 N (depending on the switching element)
Weight:	0.011 kg
Tightening torque:	Fixing nut max. 0.5 Nm
Contact material:	Gold
Terminal:	Plug-in terminal, 2.8 x 0.5 mm

AMBIENT CONDITION

Storage temperature:	– 40 °C ... + 85 °C
Operating temperature:	– 25 °C ... + 55 °C
IP front protection:	IP65, according to DIN EN 60529

CERTIFICATE

Approbations:	CB (IEC 61058-1), CSA, ENEC (EN 61058-1), UL
Conformities:	CE, UKCA, 2006 / 42 / EC (MD), 2011 / 65 / EC (RoHS)

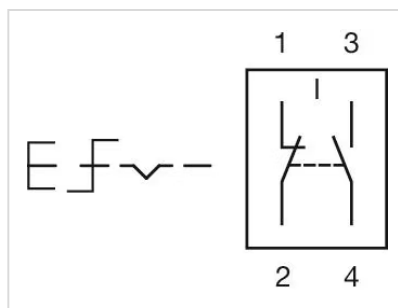
OTHER

Short Description:	Actuator, Ø 24,5 mm, mushroom-head, non illuminative, Grey, Plastic, opaque, 1 NC / 1 NO, Maintained, Plug-in terminal, 2.8 x 0.5 mm, IP65, according to DIN EN 60529
---------------------------	---

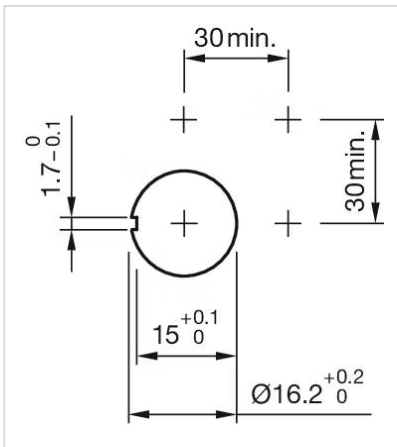
Hints:	Marking arrows
---------------	----------------

Housing colour:	Black
------------------------	-------

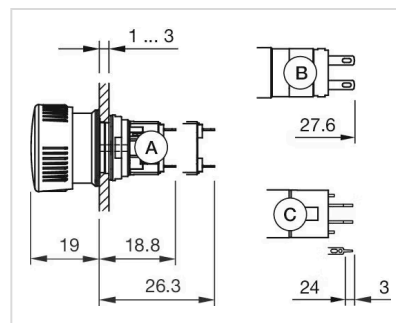
Wiring diagrams:



Mounting cut-outs:



Dimension drawings:



A = Solder terminal

B = Plug-in terminal $2.8 \text{ mm} \times 0.5 \text{ mm}$

C = Universal terminal $2.0 \text{ mm} \times 0.5 \text{ mm}$