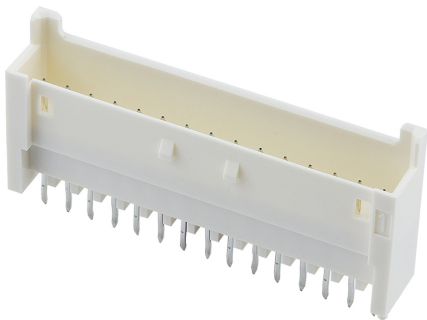




Part Number : [535171530](#)
Product Description : 2.50mm Pitch, Mini-Lock PCB Header, Single Row, Vertical, Through Hole, Matte Tin Plating, Positive Lock, 15 Circuits, with Potting Capability, Tray, 3.50mm PC Tail Length, Natural
Series Number : 53517
Status : Active
Product Category : PCB Headers and Receptacles



Documents & Resources


Drawings
[535171530_sd.pdf](#)

3D Models and Design Files
[535171530.dxf](#)
[535171530.pdf](#)
[535171530_stp.zip](#)

Specifications
[535179200-SPK-200.pdf](#)
[511030000-PS-000.pdf](#)
[511630000-PS-000.pdf](#)
[511631000-PS-000.pdf](#)

Product Environment Compliance

Compliance

GADSL/IMDS	Not Relevant
China RoHS	
EU ELV	Not Relevant
Low-Halogen Status	Not Low-Halogen per IEC 61249-2-21
REACH SVHC	Not Contained per D(2024)4144-DC (27 June 2024)
EU RoHS	Compliant per EU 2015/863

Multiple Part Product Compliance Statements
- Eu RoHS

- REACH SVHC

- Low-Halogen

Multiple Part Industry Compliance Documents

- IPC 1752A Class C

- IPC 1752A Class D

- Molex Product Compliance Declaration

- IEC-62474

- chemSHERPA (xml)

EU RoHS Certificate of Compliance

Part Details

General

Status	Active
Category	PCB Headers and Receptacles
Series	53517
Description	2.50mm Pitch, Mini-Lock PCB Header, Single Row, Vertical, Through Hole, Matte Tin Plating, Positive Lock, 15 Circuits, with Potting Capability, Tray, 3.50mm PC Tail Length, Natural
Application	Signal, Wire-to-Board
Comments	GWT performed on end product as per IEC 60695-2-11
Component Type	PCB Header
Product Name	Mini-Lock
UPC	191128828789

Agency

UL	E29179
----	--------

Electrical

Current - Maximum per Contact	3.5A
Voltage - Maximum	250V AC (RMS)/DC

Physical

Breakaway	No
Circuits (Loaded)	15

Circuits (maximum)	15
Color - Resin	Natural
Durability (mating cycles max)	30
Glow-Wire Capable	Yes
Keying to Mating Part	None
Lock to Mating Part	Yes
Material - Metal	Phosphor Bronze
Material - Plating Mating	Matte Tin
Material - Resin	Polyamide
Net Weight	2920.750/mg
Number of Rows	1
Orientation	Vertical
Packaging Type	Tray
PC Tail Length	3.50mm
PCB Locator	Yes
PCB Retention	Yes
PCB Thickness - Recommended	1.60mm
Pitch - Mating Interface	2.50mm
Plating min - Mating	1.000µm
Polarized to Mating Part	Yes
Polarized to PCB	Yes
Shrouded	Fully
Stackable	No
Temperature Range - Operating	-55° to +105°C
Termination Interface Style	Through Hole - Kinked Pin

Mates With / Use With

Mates with Part(s)

Description	Part Number
Mini-Lock Single Row Receptacle Housings	<u>51163</u>
Mini-Lock-to-Mini-Lock Off-the-Shelf (OTS) Cable Assemblies	<u>15137</u>
