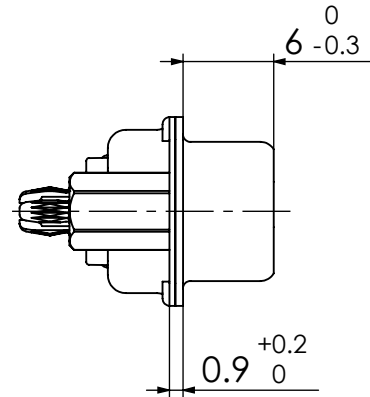
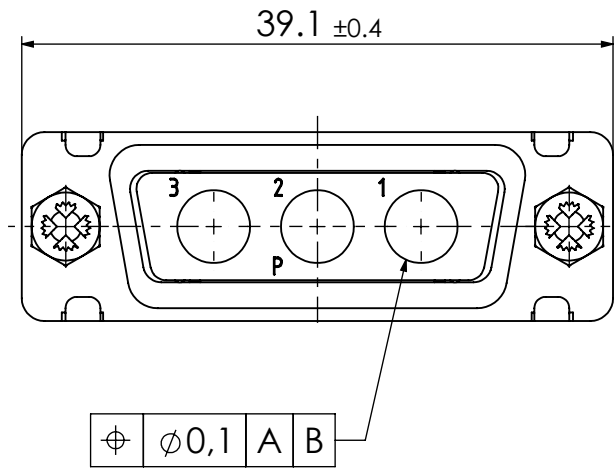
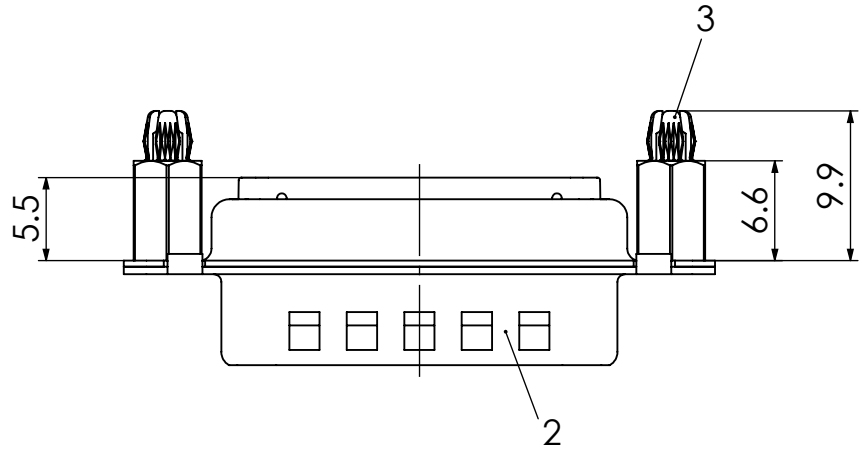
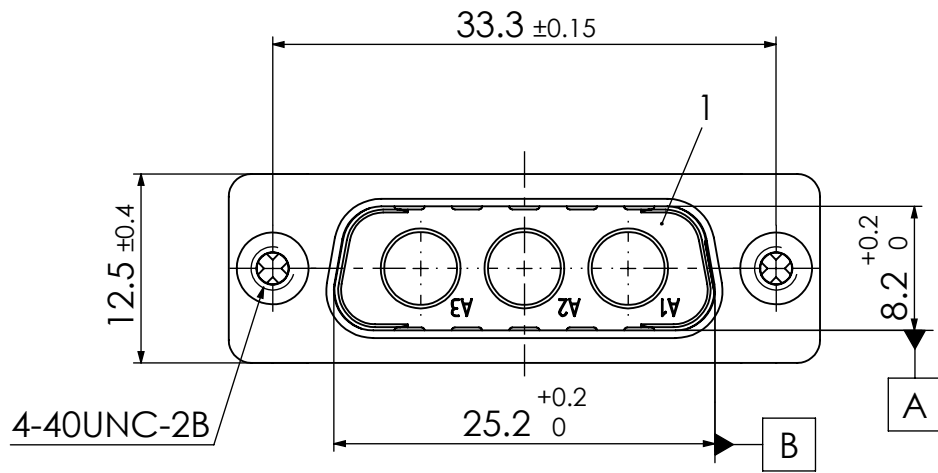
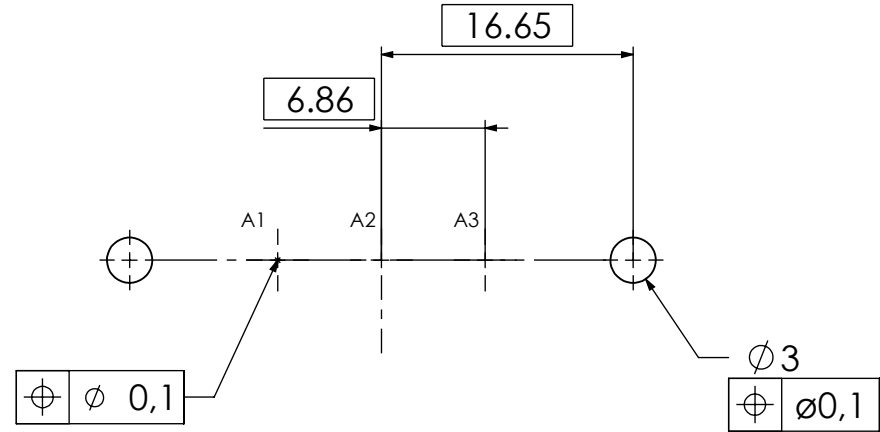


COMMENT:  
ALL RIGHTS ARE RESERVED BY US FOR THIS DRAWING. WITHOUT OUR PRIOR CONSENT,  
IT MAY NEITHER BE DUBICATED NOR MADE AVAILABLE TO A THIRD PARTY.  
AND IT ALSO MAY NOT BE IMPROPERLY USED BY TE RECEIVER, OR A THIRD PARTY.



PCB hole pattern, mounting side



3	2	Snap-in bolt	PCB 1.6mm / Brass	tin plated
2	1	Shell	Steel	tin plated
1	1	Insulator	PBT (-55°C to +130°C) acc. UL94V-0	green
No.	St.	Part	Type Description/Material	Surface plating/Colour/Class
FUNCTIONAL SYMBOLS				
THIS DRAWING CONTAINS INFORMATION THAT IS PROPRIETARY TO MOLEX ELECTRONIC TECHNOLOGIES, LLC AND SHOULD NOT BE USED WITHOUT WRITTEN PERMISSION				
DIMENSION UNITS		SCALE	MEASUREMENTS WITHOUT TOLERANCE ACC. TO ISO 2768-m	
mm		2:1		
			CURRENT REVISION	
			DRWN: DRAWN BY mteubel	18-12-2023
			APPR: APPR BY msteinbrueck	22-12-2023
			INITIAL REVISION	
			DRWN: DRAWN BY ADenzinger	07-09-2006
			APPR: APPR BY sschref	08-09-2006
			PRODUCT CUSTOMER DRAWING	
			MATERIAL NUMBER	REVISION
			1731071011	2
			REPLACEMENT FOR: 1731071011_Rev.A1	FRIST ANGLE PROJECTION
			DRAWING A3-SIZE	DOCUMENT NUMBER
				FM3W3P-0982
				CUSTOMER
				GENERAL MARKET
				SHEET NUMBER
				1 OF 1