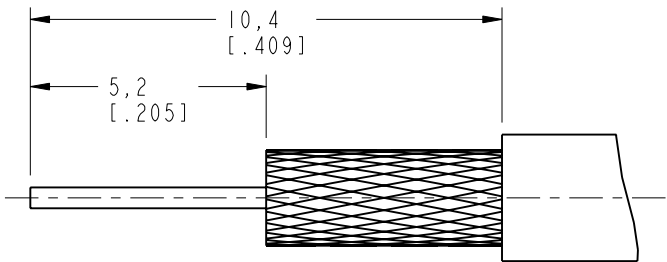
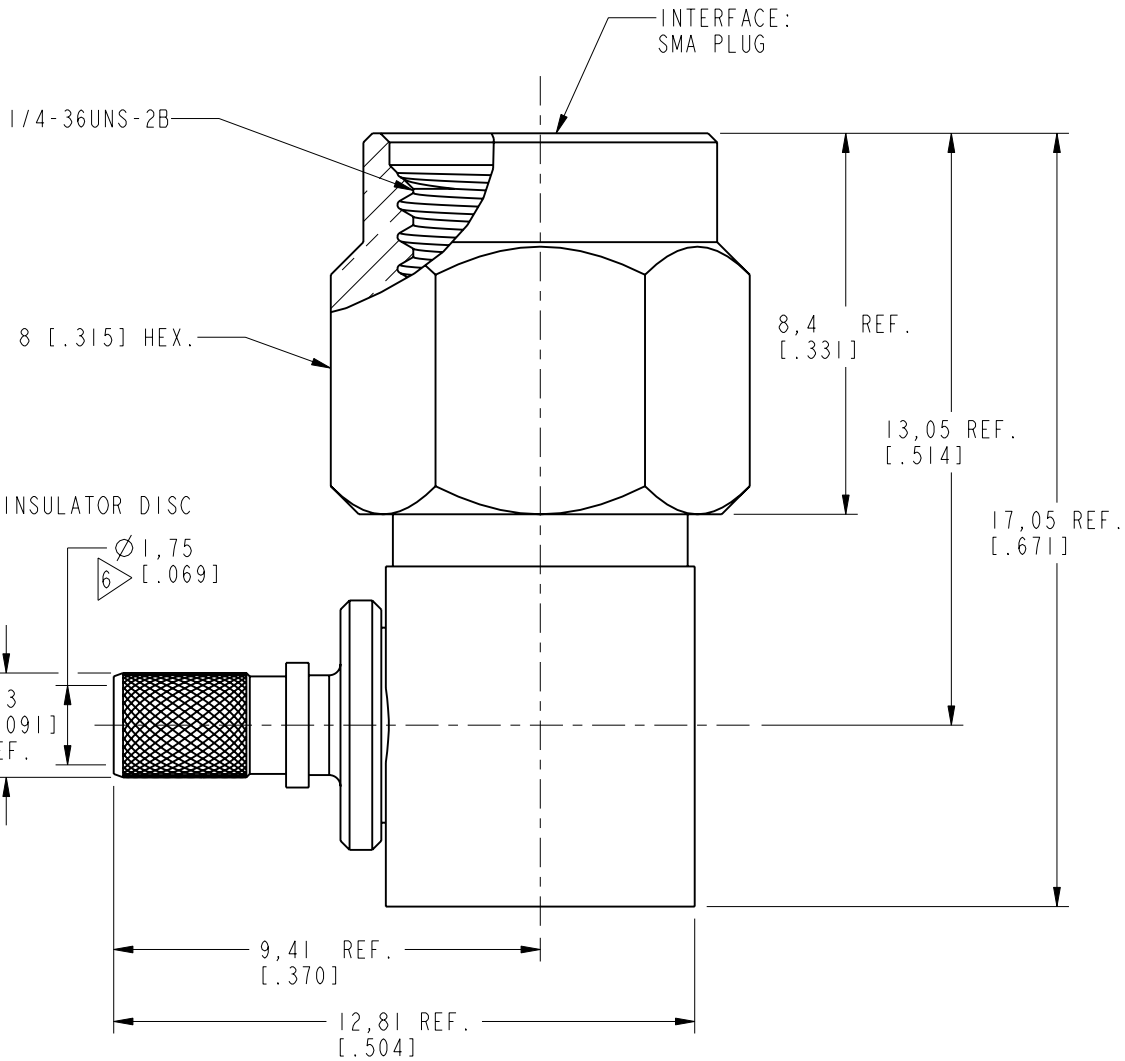
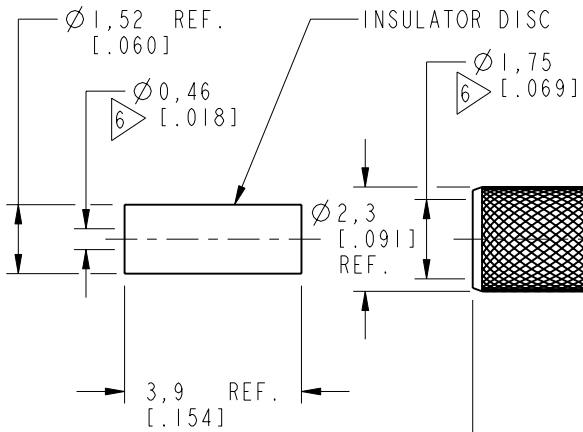
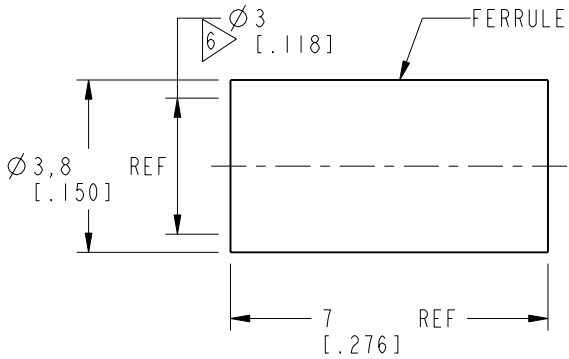
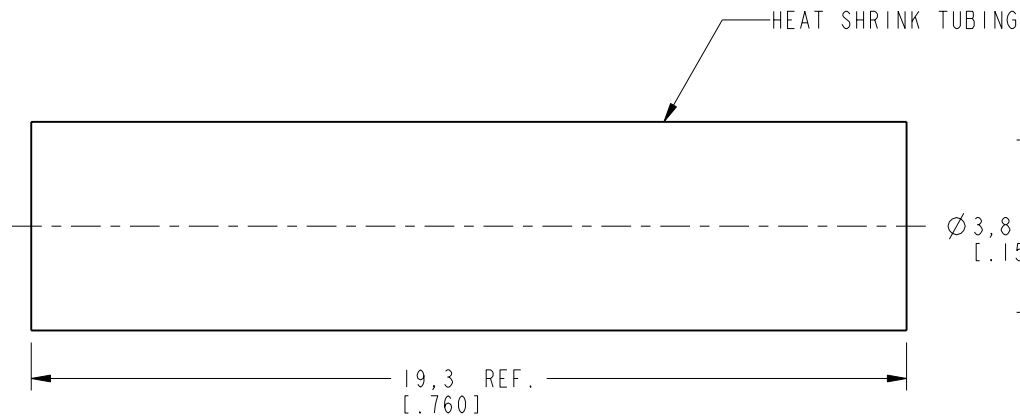


NOTES:

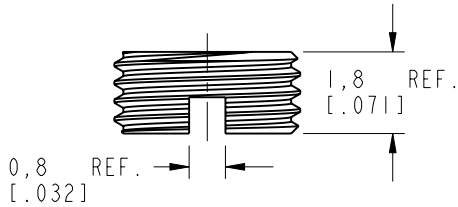
1. MATERIALS AND FINISHES:
FERRULE - COPPER, NICKEL PLATING
BODY - BRASS, NICKEL PLATING
CONTACT - BRASS, GOLD PLATING
RETAINER RING - SUS 304, NATURAL
GASKET - SILICONE RUBBER, RED
INSULATOR - PTFE, NATURAL
INSULATOR DISC - ULTEM 1000, NATURAL
2. ELECTRICAL:
A. IMPEDANCE: 50 OHMS
B. FREQUENCY RANGE: DC - 12.4 GHz
C. VSWR (RETURN LOSS): 1.10 (-26dB) MAX. DC - 6 GHz
1.13 (-24dB) MAX. 6 - 12 GHz
D. DIELECTRIC WITHSTANDING VOLTAGE: 500 VRMS, MIN.
3. MECHANICAL:
A. DURABILITY: 500 CYCLES, MIN.
B. TEMPERATURE RANGE: -65°C TO +165°C

4. INSTRUCTIONS
A. CONTACT PIN TO SOLDER
B. HAND TIGHTEN CAP AFTER SOLDERING
C. CRIMPED FERRULE HEX CRIMP SIZE .128"
5. PACKAGING:
A. QUANTITY: SINGLE PACK
B. MARKING: BAG TO BE MARKED
"AMPHENOL RF, 901-10607 & DATE CODE

6 CABLE ENTRY DIMENSIONS)



RECOMMENDED
CABLE STRIPPING DIM'S



CUSTOMER OUTLINE DRAWING
ALL OTHER SHEETS ARE FOR INTERNAL USE ONLY

UNLESS OTHERWISE SPECIFIED, DIMENSIONS ARE IN METRIC AND TOLERANCES ARE: <0.5mm ± 0.05mm 0.5 - 6mm ± 0.1mm 6 - 30mm ± 0.2mm 30 - 120mm ± 0.3mm ANGLES ± 1° NOTICE - These drawings, specifications, or other data (1) are, and remain the property of Amphenol corp. (2) must be returned upon request; and (3) are confidential and not to be disclosed to any person other than those to whom they are given by Amphenol Corp. the furnishing of these drawings, specifications, or other data by Amphenol Corp., or to any other person to anyone for any purpose is not to be regarded by implication or otherwise in any manner licensing, granting rights to permitting such holder or any other person to manufacture, use or sell any product, process or design, patented or otherwise, that may in any way be related to or disclosed by said drawings, specifications, or other data.	MATERIAL	DRAWN	DATE	TITLE		Amphenol RF www.amphenolrf.com	
	SEE NOTES	M. ZHANG	21-Feb-19				
	REFERENCE	ENGINEER	DATE	SMA R/A CRIMP PLUG (FOR LMR-100 CABLE)		DRAWING NO. 901-10607	
	EAR# 7994	S. DUAN	09-Dec-17			ITEM NO. 901-10607	
	REF: 901-10562	APPROVED	DATE	SCALE: 6.0:1.0		PART NO. 901-10607	
	CONFIGURATION LEVEL: In Work	S.HSIEH	25-Feb-19	SHEET 2 OF 2			
	FINISH	CAD FILE		DWG SIZE B		REV A	

Mouser Electronics

Authorized Distributor

Click to View Pricing, Inventory, Delivery & Lifecycle Information:

[Amphenol:](#)

[901-10607](#)