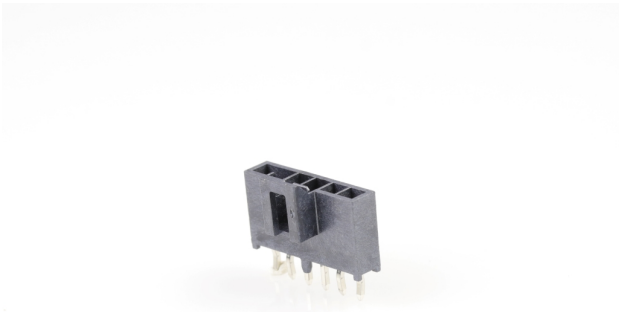




Part Number : [1053093806](#)
Product Description : Nano-Fit Vertical Header, Through Hole, 2.50mm Pitch, Single Row, 6 Circuits, with Kinked Pins, 0.76µm Gold (Au) Plating, Lubricated, Black, Glow-Wire Capable, Tape and Reel
Series Number : 105309
Status : Active
Product Category : PCB Headers and Receptacles
Packaging Alternative : [1053091406 \(Tray\)](#)



Documents & Resources

- Drawings**
[Drawing 1053093806_sd.pdf](#)
[Packaging Design Drawing 1053091000-PK-000.pdf](#)
- 3D Models and Design Files**
[3D Model 1053093806_stp.zip](#)
- Specifications**
[Product Specification 1053001000-PS-ES-000.pdf](#)
[Product Specification PS-105300-100-001.pdf](#)

Product Environment Compliance

Compliance

China RoHS	Not Reviewed
EU ELV	Not Reviewed
Low-Halogen Status	Not Reviewed
REACH SVHC	Not Reviewed
EU RoHS	Not Reviewed

- [Multiple Part Product Compliance Statements](#)
- Eu RoHS
 - REACH SVHC
 - Low-Halogen

[Multiple Part Industry Compliance Documents](#)

- IPC 1752A Class C
- IPC 1752A Class D
- Molex Product Compliance Declaration
- IEC-62474
- chemSHERPA (xml)

EU RoHS Certificate of Compliance

Part Details

General

Status	Active
Category	PCB Headers and Receptacles
Series	105309
Description	Nano-Fit Vertical Header, Through Hole, 2.50mm Pitch, Single Row, 6 Circuits, with Kinked Pins, 0.76µm Gold (Au) Plating, Lubricated, Black, Glow-Wire Capable, Tape and Reel
Application	Power, Wire-to-Board
Component Type	PCB Header
Product Family	Nano-Fit Power Connectors
Product Name	Nano-Fit
UPC	193264644575

Electrical

Current - Maximum per Contact	8.0A
Voltage - Maximum	250V AC (RMS)/DC

Physical

Breakaway	No
Circuits (Loaded)	6
Circuits (maximum)	6
Color - Resin	Black
Durability (mating cycles max)	50
Glow-Wire Capable	Yes
Guide to Mating Part	No
Keying to Mating Part	Yes
Lock to Mating Part	Yes

Material - Metal	Brass
Material - Plating Mating	Gold
Material - Plating Termination	Tin
Material - Resin	Liquid Crystal Polymer
Net Weight	0.668/g
Number of Rows	1
Orientation	Vertical
Packaging Type	Embossed Tape on Reel
PC Tail Length	3.20mm
PCB Locator	Yes
PCB Retention	Yes
PCB Thickness - Recommended	1.60mm, 2.40mm
Pitch - Mating Interface	2.50mm
Pitch - Termination Interface	2.50mm
Plating min - Mating	0.762µm
Plating min - Termination	1.524µm
Polarized to Mating Part	Yes
Polarized to PCB	Yes
Shrouded	Yes
Stackable	No
Temperature Range - Operating	-40° to +115°C
Termination Interface Style	Through Hole

Mates With / Use With

Mates with Part(s)

Description	Part Number
Nano-Fit Receptacle Housing, TPA Capable, 2.50mm Pitch, Single Row, 6 Circuits, Black, Glow-Wire Capable	<u>1053071206</u>