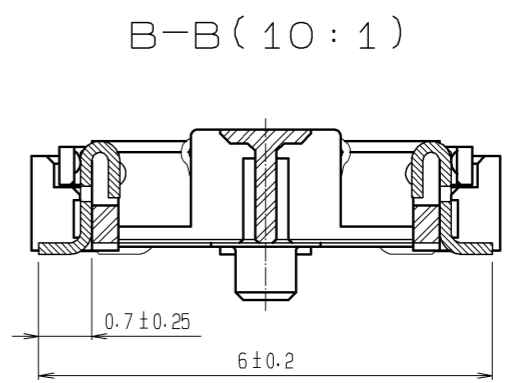
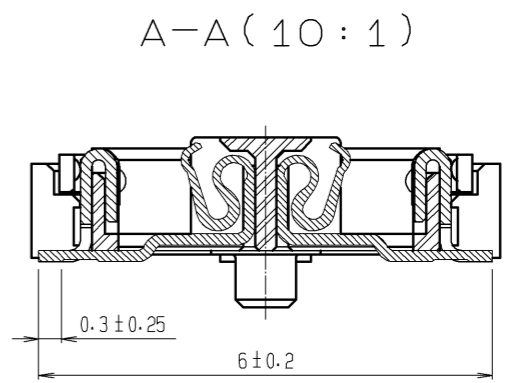
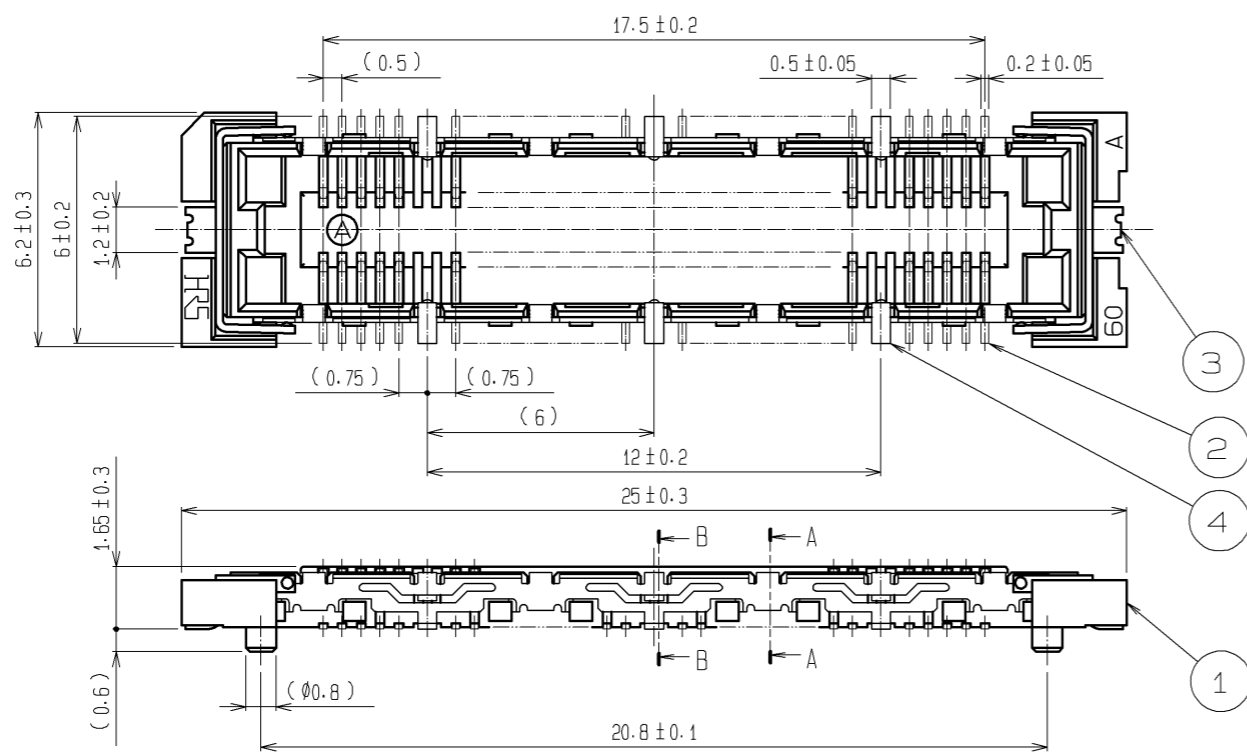
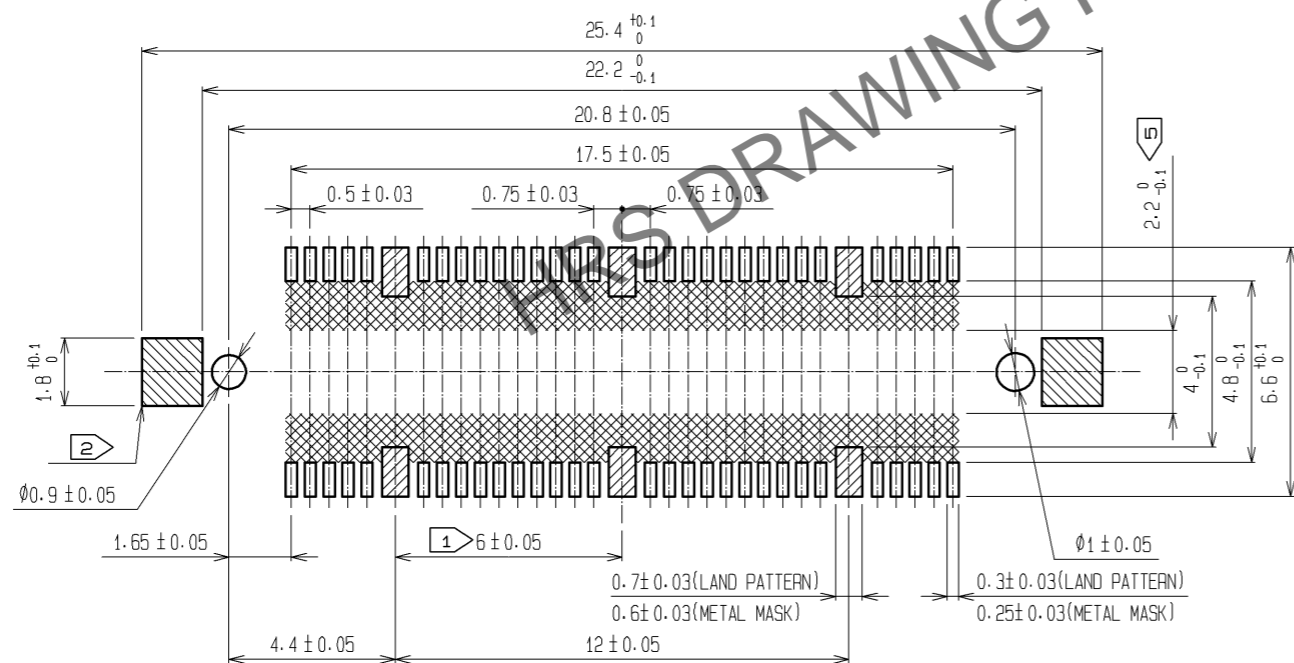


Jul.1.2024 Copyright 2024 HIROSE ELECTRIC CO., LTD. All Rights Reserved.
In case of consideration for using Automotive equipment / device which demand high reliability, kindly contact our sales window correspondents.



RECOMMENDED LAND PATTERN DIMENSION OF PCB
(RECOMMENDED METAL MASK THICKNESS: 0.15mm)



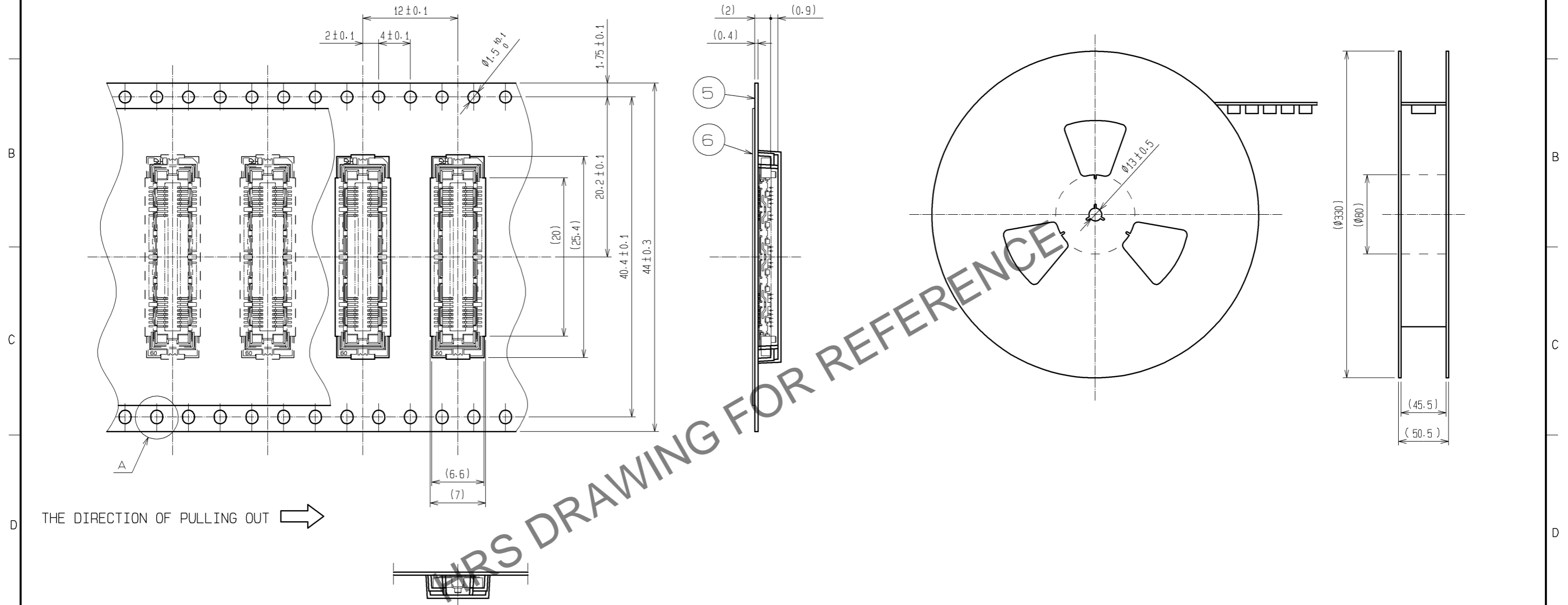
- NOTES
- ① 6 HATCHED PARTS: GROUND CIRCUIT.
 - ② 2 HATCHED PARTS: GROUND CIRCUIT.
 - ③ SMT LEAD-COPLANARITY: 0.1 MAX.
 - ④ THIS PRODUCT HAS NO POLARITY TO PATTERN FOR MOUNTING.
 - ⑤ MAKE SURE WIDTH OF PATTERN IS WITHIN THAT OF LAND .OR LEAD MAY TOUCH PATTERN. (THIS APPLIES TO HATCHED AREA.)
 - ⑥ TO BE EMBOSSED CARRIER TAPED AS SPECIFIED IN SHEET 2.
 - ⑦ THE DIMENSIONS IN PARENTHESES ARE FOR REFERENCE.

| 3, 4 | PHOSPHOR BRONZE | TIN PLATING | | | | | | |
|-------------------------|-----------------|---------------------------------|------------------------------|----------|--------------------------|----------|---------|------|
| | | CONTACT AREA : GOLD 0.1μm min. | | | | | | |
| 2 | PHOSPHOR BRONZE | LEAD AREA : GOLD FLASH | | | | | | |
| | | UNDER PLATING : NICKEL 1μm min. | 6 | PET | (TOP COVER TAPE) | | | |
| 1 | LCP | BEIGE UL94V-0 | 5 | PS | (EMBOSSED CARRIER TAPE) | | | |
| NO. | MATERIAL | FINISH . REMARKS | NO. | MATERIAL | FINISH . REMARKS | | | |
| UNITS | mm | SCALE | 5 : 1 | COUNT | DESCRIPTION OF REVISIONS | DESIGNED | CHECKED | DATE |
| APPROVED : HS. OKAWA | | 09.05.22 | DRAWING NO. EDC3-152108-21 | | | | | |
| CHECKED : HT. YAMAGUCHI | | 09.05.22 | PART NO. FX11LA-60S/6-SV(91) | | | | | |
| DESIGNED : YN. TAKANO | | 09.05.21 | CODE NO. CL573-0102-1-91 | | | | | |
| DRAWN : HK. SUNADORI | | 09.05.20 | | | | | | |

Jul.1.2024 Copyright 2024 HIROSE ELECTRIC CO., LTD. All Rights Reserved.
 In case of consideration for using Automotive equipment / device which demand high reliability, kindly contact our sales window correspondents.

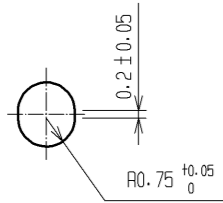
DRAWING FOR PACKING(2:1)

REELED DIMENSION(Free)



THE DIRECTION OF PULLING OUT →

A(5:1)



- NOTES
- 1 REEL : 1000 CONNECTORS.
 - 2 MINIMUM 10 COMPARTMENTS FROM BOTH REEL ENDS REMAIN EMPTY.
 - 3 THIS PRODUCT HAS NO POLARITY TO TAPE AND REEL PACKAGING.
 - 4 THE DIMENSIONS IN PARENTHESES ARE FOR REFERENCE.

| | | |
|------------|-------------|---------------------|
| HRS | DRAWING NO. | EDC3-152108-21 |
| | PART NO. | FX11LA-60S/6-SV(91) |
| | CODE NO. | CL573-0102-1-91 |
| | | △ 2/2 |