

Actuator

704.063.7

Distribution by
DigiKey**DigiKey**<https://digikey.eao.com/p/704.063.7>

Your product:



704.063.7 Actuator

FRONT

Front bezel material:	Aluminium
Front bezel shape:	with protective hood
Front form:	round
Front bezel colour:	Nature
Front dimension:	Ø 29 mm

MOUNTING

Design:	raised
---------	--------

OPERATING-/INDICATION PART

Lens illumination:	illuminative
Lens colour:	Colourless
Lens shape:	flush
Lens material:	Plastic
Lens optics:	transparent

ELECTRICAL CHARACTERISTICS

Standards:	The switches comply with the "Standards for low-voltage switching devices" DIN EN 60947-1
------------	---

MECHANICAL CHARACTERISTIC

Operating Travel:	ca. 5.8 mm ± 0.2 mm
Switching action:	Maintained

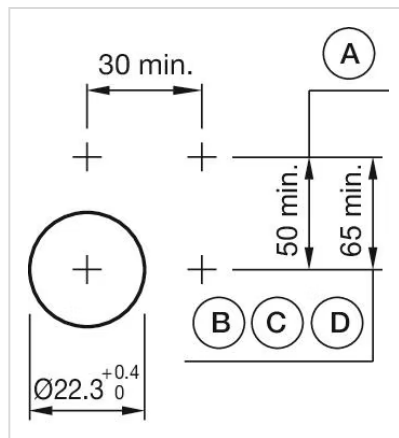
Terminal:	Screw terminal
Weight:	0.056 kg
Operating force:	8 N
Mechanical lifetime:	≤3 Mio. cycles of operation

AMBIENT CONDITION

IP Protection:	IP65 front side
Storage temperature:	– 40 °C ... + 85 °C
Operating temperature:	– 40 °C ... + 55 °C

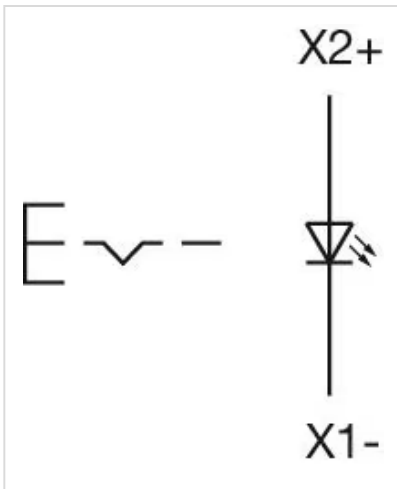
OTHER

Housing material:	Plastic
Short Description:	Actuator, Ø 29 mm, flush, illuminative, Colourless, Plastic, transparent, round, with protective hood, Nature, Aluminium, anodised, Maintained, Screw terminal
Housing colour:	Grey
max. number of switching elements:	3
Hints:	Frontring with protective cover to be mounted with a torque of 0.4 Nm onto actuator, Max. 3 switching elements can be clipped on
Mounting cut-outs:	

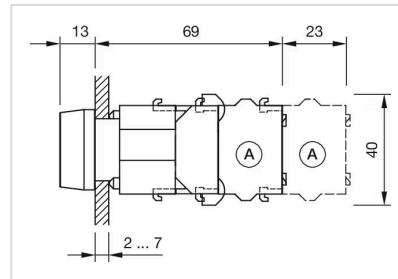


A = Screw terminal
 B = Push-in terminal (PIT)
 C = Plug-in terminal 6.3 mm x 0.8 mm
 D = Double plug-in terminal 6.3 mm x 0.8 mm

Wiring diagrams:



Dimension drawings:



A = Screw terminal