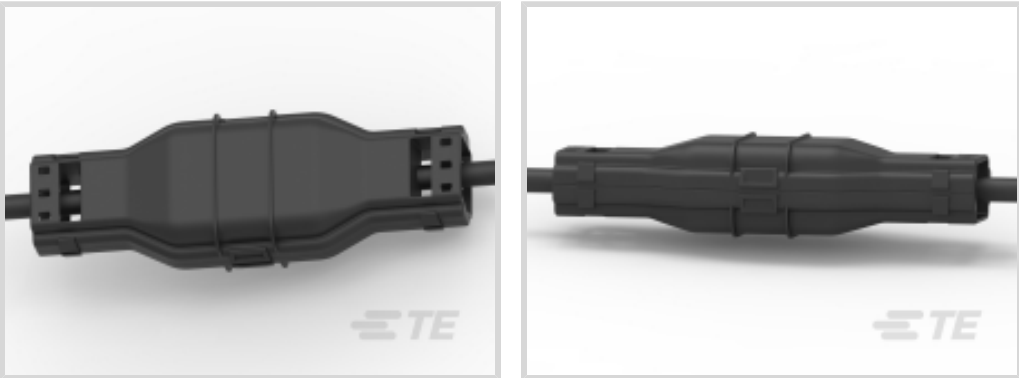




Energy & Power > Power Cable Accessories > Joints & Splices



Joints & Splice Product Availability: **Europe, Middle East & Africa**

Installation Instruction: **English**

Joints & Splice Technology: **Cold Applied**

Joints & Splice Voltage Class: **≤ 1 kV**

Joint & Splice Application Type: **Inline**

Features

Product Type Features

Connector Type	Mechanical
Shelf Life	Unlimited
Filler	PowerGel
Component Design	PowerGel Sealing Gel
Cable Seal	Gel
Product Family	GILS
Joints & Splice Technology	Cold Applied
Joints & Splice Product Type	LV Gel Joint
Cable Shield Style	Inline
Mechanical Connectors Included	Yes
Closing Method	Snap

Configuration Features

Number of Main Wires (Max)	1
----------------------------	---

Electrical Characteristics

Joints & Splice Voltage Class	≤ 1 kV
-------------------------------	--------

Body Features

Color	Black
-------	-------



Dimensions

Width (Installed)	51 mm[2 in]
Length (Installed)	108 mm[4.25 in]
Cross-Section Range	50 – 150 mm²[#2 – 4/0 AWG/kcmil]

Usage Conditions

Environmental Resistance	Yes
Operating Temperature Range	-40 – 90 °C

Operation/Application

Free of Lead, Cadmium, Heavy Metals	Yes
Emission Free Label-Free Acc (REACH & CLP)	Yes
Halogen Free	Yes
Mechanical Resistance	Against Mechanical Impact
UV-Stabilized	Yes
Joint & Splice Application Type	Inline

Industry Standards

Standards	ANSI C119.1
-----------	-------------

Product Availability

Joints & Splice Product Availability	Europe, Middle East & Africa
--------------------------------------	------------------------------

Packaging Features

Standard Pack	18
---------------	----

Other

Product Use	PowerGel-filled box for LV underground & overhead inline splices.
Installation Instruction	English

Product Compliance

For compliance documentation, visit the product page on TE.com>

EU RoHS Directive 2011/65/EU	Compliant
EU ELV Directive 2000/53/EC	Compliant
China RoHS 2 Directive MIIT Order No 32, 2016	No Restricted Materials Above Threshold
EU REACH Regulation (EC) No. 1907/2006	Current ECHA Candidate List: JUNE 2024 (241)



Candidate List Declared Against: JAN 2021 (211)  
Does not contain REACH SVHC

Halogen Content	Low Halogen - Br, Cl, F, I < 900 ppm per homogenous material. Also BFR/CFR/PVC Free
Solder Process Capability	Not applicable for solder process capability

Product Compliance Disclaimer

This information is provided based on reasonable inquiry of our suppliers and represents our current actual knowledge based on the information they provided. This information is subject to change. The part numbers that TE has identified as EU RoHS compliant have a maximum concentration of 0.1% by weight in homogenous materials for lead, hexavalent chromium, mercury, PBB, PBDE, DBP, BBP, DEHP, DIBP, and 0.01% for cadmium, or qualify for an exemption to these limits as defined in the Annexes of Directive 2011/65/EU (RoHS2). Finished electrical and electronic equipment products will be CE marked as required by Directive 2011/65/EU. Components may not be CE marked. Additionally, the part numbers that TE has identified as EU ELV compliant have a maximum concentration of 0.1% by weight in homogenous materials for lead, hexavalent chromium, and mercury, and 0.01% for cadmium, or qualify for an exemption to these limits as defined in the Annexes of Directive 2000/53/EC (ELV). Regarding the REACH Regulation, the information TE provides on SVHC in articles for this part number is based on the latest European Chemicals Agency (ECHA) 'Guidance on requirements for substances in articles' posted at this URL: <https://echa.europa.eu/guidance-documents/guidance-on-reach>

## Compatible Parts

TE Part # E25218-000  
GILS-350(B18)

## Customers Also Bought

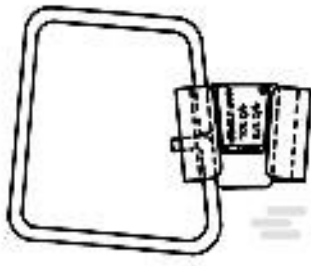
TE Part #146905-000  
Heat Shrink Shielded Cable Splice Kit

TE Part #CP8406-000  
HVBT-2-R-01(B4)

TE Part #A90301-000  
BCAC-G-5D/8-01(B12)

TE Part #1710723-6  
15kILD-KS9C-w/T-556.5






TE Part #600464

AMPACT STIRRUP ASSY



TE Part #F60655-000

GELWRAP-18/4-200(B6)



TE Part #446451-000

GTAP-2(B18)

TE Part #ER5007-000

BCIC-G-BYPASS-03-3PH(B1)

TE Part #F64591-000

FCSM-38/12-150/S(CON-ED)

Documents

Datasheets & Catalog Pages

GILS RAYCHEM GEL IN-LINE SPLICE KIT

English

Instruction Sheets

Instruction Sheet (U.S.)

English