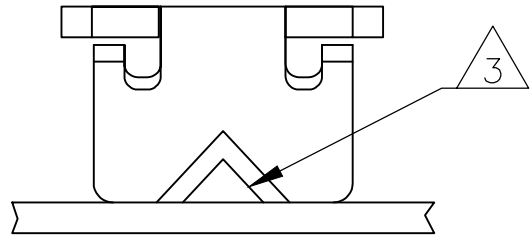
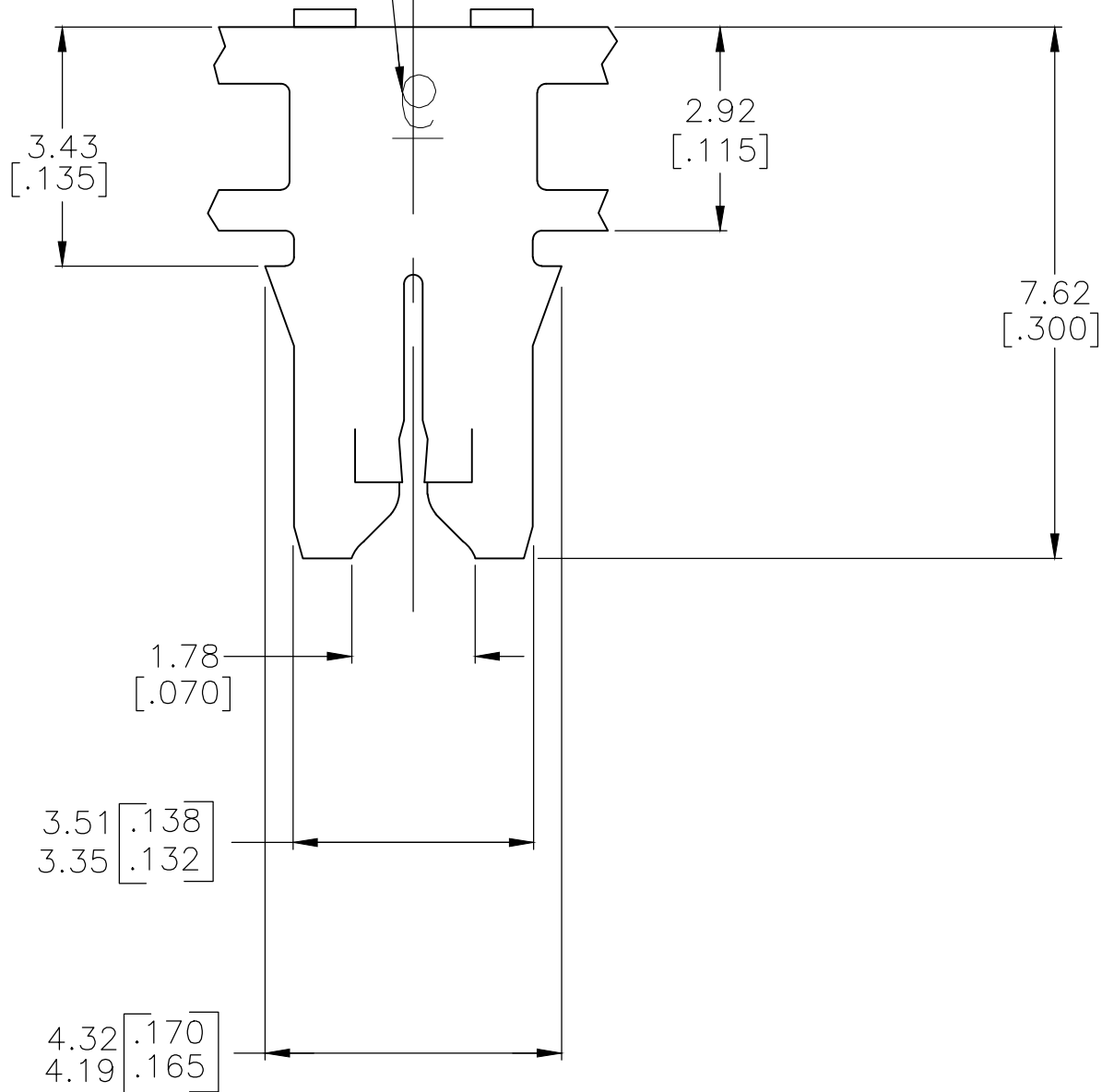


REVISIONS					
P	LTR	DESCRIPTION	DATE	DWN	APVD
	A1	NOTE 4 ADDED. NOTE 3 UPDATED	28MAR2018	SV	PKS

D



IDENTIFICATION NUMBER 9
FOR MAGNET WIRE RANGE



3.43
[.135] MAX
FREE STATE

32°±5°

0.38
[.015]

7.87
[.310]

0.406 ± 0.025
[.016 ± .001]

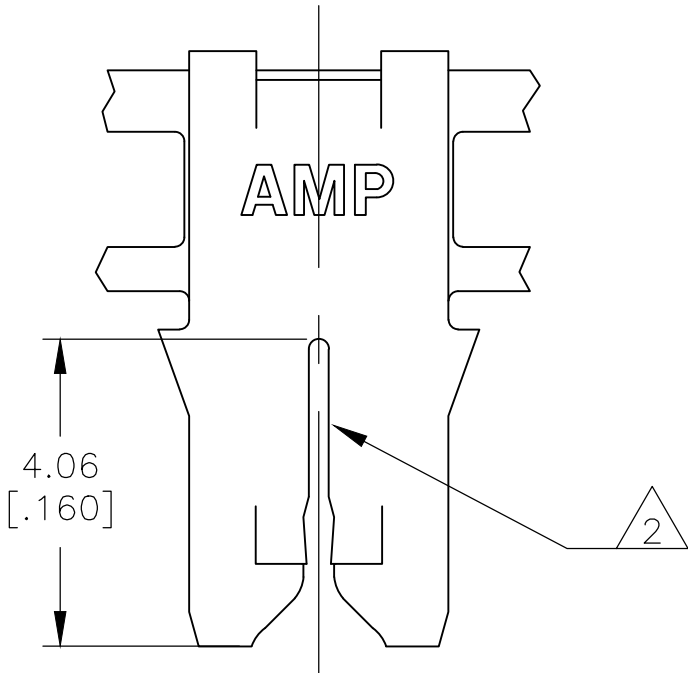
3.05 [.120]
2.95 [.116]

1 CONTINUOUS STRIP ON REELS WITH TERMINALS
LOCATED ON 5.59±0.08[.220±.003] CENTERS.

2 SLOT ACCEPTS A SINGLE OR DOUBLE WIRE ONLY
COPPER WIRE RANGE 0.38–0.50mm [#27–#24] AWG
ALUMINUM WIRE RANGE 0.45–0.50mm [#25–#24] AWG

3 POKE-IN ACCEPTS A 0.50–0.90 mm² [#20–#18 AWG]
SOLID OR FUSED STRANDED LEAD WIRE.

4 PART WILL ACCEPT EITHER POKE-IN TAB OR FUSED LEAD WIRE.



C

B

A

D

C

B

A

PAPER	CARDBOARD REEL	TIN PLATED	BRASS	2825380–1
SPLICE	REELING MATERIAL	FINISH	MATERIAL	PART NO
THIS DRAWING IS A CONTROLLED DOCUMENT.		DWN 09NOV2016 BASVESH WARAD	TE Connectivity	
		CHK 09NOV2016 SUBRAMANIAN, VIJAI		
DIMENSIONS: mm[INCHES]		APVD 09NOV2016 SUBRAMANIAN, VIJAI	NAME TERMINAL, POKE-IN, 300 SERIES MAG-MATE —	
		PRODUCT SPEC 108–2012		
		APPLICATION SPEC 114–2046		
MATERIAL SEE TABLE	FINISH SEE TABLE	WEIGHT 0	SIZE A2	CAGE CODE 00779
CUSTOMER DRAWING			DRAWING NO C=2825380	RESTRICTED TO —
			SCALE 10:1	SHEET 1 OF 1
			REV A1	

Mouser Electronics

Authorized Distributor

Click to View Pricing, Inventory, Delivery & Lifecycle Information:

[TE Connectivity:](#)

[2825380-1](#)