

Amphenol
FCI

© 2016 APCI

spec ref -				dr Sunny2 Liu		2016/06/23		projection		MM		size A2		scale 4:1	
tolerance std -				eng Sunny2 Liu		2016/07/14						ecn no -		rel level Released	
ASME Y14.5				chr Terris Liu		2016/07/14									
				appr Pei-Ming Zheng		2016/07/14		product family HPCE							
surface -		linear		Amphenol FCI		title HPCE VT RECET 2LPI2S		dwg no 10140155		rev A					
		angular										0° ±2°			
ASME Y14.5						cat. no. -		Product - Customer Drw				sheet 1 of 4			

PDS: Rev :A

STATUS:Released

Printed: Jul 14, 2016

A

B

C

D

E

F

A

B

C

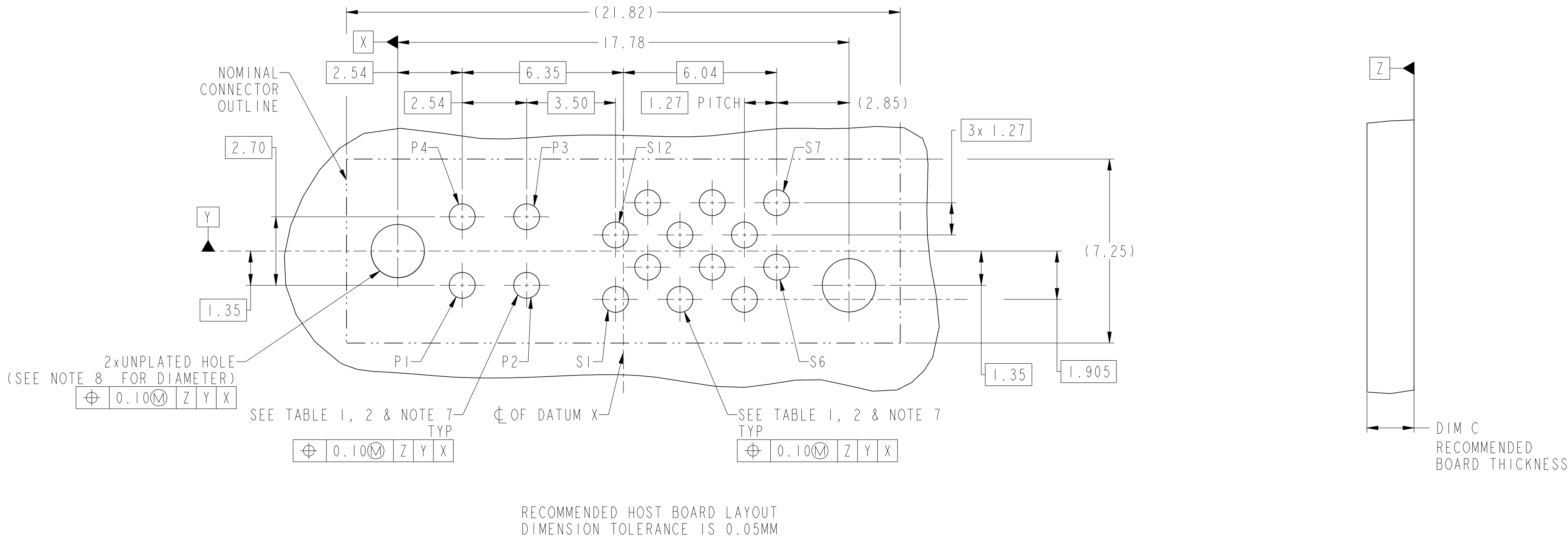
D

E

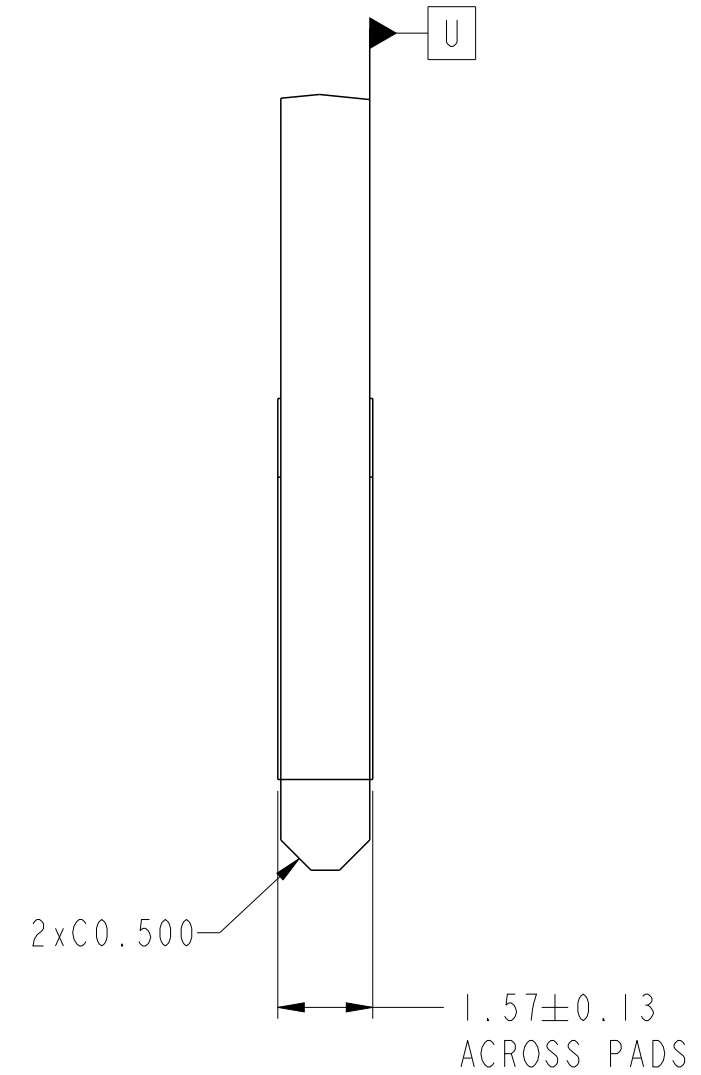
F

CONTACT TYPE	TOP LAYER DESCRIPTION	TABLE 1 (HPCE / SOLDER TAILS) PLATED THROUGH-HOLE REQUIREMENTS				
		DRILLED HOLE DIAMETER	COPPER THICKNESS	TIN-LEAD THICKNESS	TIN THICKNESS	FINISHED HOLE DIAMETER
POWER & SIGNAL	TIN-LEAD	1.10-1.16 (1.15 DRILL)	0.025 - 0.050	0.005 - 0.015	--	0.94 - 1.10
	IMMERSION TIN	1.10-1.16 (1.15 DRILL)	0.025 - 0.050	--	0.9 - 1.5um	0.94 - 1.10
	COPPER	1.10-1.16 (1.15 DRILL)	0.025 - 0.050	--	--	0.94 - 1.10


CONTACT TYPE	TOP LAYER DESCRIPTION	TABLE 2 (HPCE / PRESS-FIT TAILS) PLATED THROUGH-HOLE REQUIREMENTS				
		DRILLED HOLE DIAMETER	COPPER THICKNESS	TIN-LEAD THICKNESS	TIN THICKNESS	FINISHED HOLE DIAMETER
POWER & SIGNAL	TIN-LEAD	0.81-0.86 (0.85 DRILL)	0.025 - 0.050	0.005 - 0.015	--	0.65 - 0.80
	IMMERSION TIN	0.81-0.86 (0.85 DRILL)	0.025 - 0.050	--	0.9 - 1.5um	0.70 - 0.80
	COPPER	0.81-0.86 (0.85 DRILL)	0.025 - 0.050	--	--	0.70 - 0.80



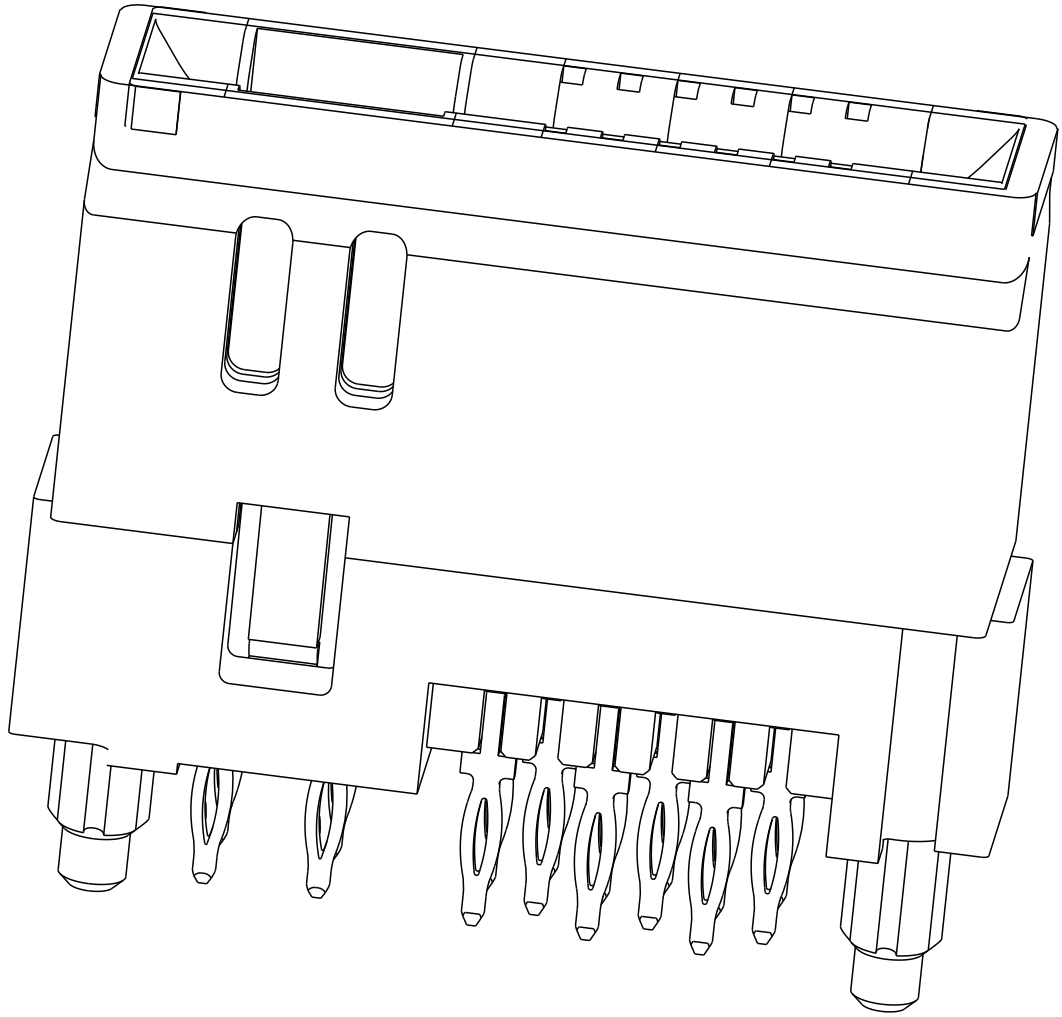
spec ref -				dr Sunny2 Liu		2016/06/23		projection		MM		size A2		scale 1:1	
tolerance std -				eng Sunny2 Liu		2016/07/14						ecn no -		rel level Released	
ASME Y14.5				chr Terris Liu		2016/07/14									
				appr Pei-Ming Zheng		2016/07/14		product family							
surface -		linear		Amphenol FCI		title HPCE VT RECET		dwg no 10140155		rev A					
		0.X ±0.50													
		0.XX ±0.25													
ASME Y14.5		angular 0° ±2°				cat. no. -		Product - Customer Drw		sheet 2 of 4					



RECOMMENDED MATING BOARD LAYOUT
DIMENSION TOLERANCE IS 0.05MM

spec ref -		dr Sunny2 Liu		2016/06/23		projection 		size A2		scale 1:1	
tolerance std -		eng Sunny2 Liu		2016/07/14				ecn no -			
ASME Y14.5		TOLERANCES UNLESS OTHERWISE SPECIFIED		chr Terris Liu		2016/07/14		product family -		rel level Released	
		appr Pei-Ming Zheng		2016/07/14							
surface -		linear		Amphenol FCI		title HPCE VT RECET 2LP12S		dwg no 10140155		rev A	
		0.X ±0.50									
		0.XX ±0.25									
ASME Y14.5		angular 0° ±2°		cat. no. -		Product - Customer Drw				sheet 3 of 4	

HPCE PART NUMBER (TABLE 3)					
PART NUMBER	TAIL TYPE	ORIENTATION KEY	DIM A TAIL LENGTH (POWER CONTACT)	DIM B TAIL LENGTH (SIGNAL CONTACT)	DIM C RECOMMENDED BOARD THICKNESS
10140155-001LF	SOLDER	YES	3.17 ±0.25	3.17±0.25	2.36±0.13
10140155-002LF		NO			
10140155-003LF	PERSS FIT	YES			1.57 MIN
10140155-004LF		NO			
10140155-005LF	SOLDER	YES	4.05±0.25	3.75±0.25	3.20±0.13
10140155-006LF		NO			



NOTES:

1. CONNECTOR MATERIALS:

HOUSING: HIGH TEMPERATURE THERMAL PLASTIC, BLACK
UL 94V-0 COMPLIANT
CONTACTS: HIGH PERFORMANCE COPPER ALLOY.
2. CONTACT FINISH REF. GS-12-604 SECTION 5.2.
3. PRODUCT SPECIFICATION: GS-12-604.
4. APPLICATION SPECIFICATION: GS-20-128.
5. PRODUCT MARKING ON HOUSING IN AREA SHOWN MEETS AFCI SPECIFICATION: GS-24-007.
6. PACKAGING MEETS FCI SPECIFICATION GS-14-937.
7. ALL HOLE SIZES ARE FINISHED HOLE SIZES.
8. MOUNTING HOLES ARE UNPLATED

Ø 2.40 +/- 0.1 FOR PRESS-FIT TAILS
Ø 2.18 +/- 0.03 FOR SOLDER TAILS
9. PRESS FIT APPLICATION TOOL DRAWING:10119453.

spec ref -				dr Sunny2 Liu		2016/06/23		projection		MM		size A2		scale 4:1	
tolerance std -				eng Sunny2 Liu		2016/07/14						ecn no -			
ASME Y14.5				chr Terris Liu		2016/07/14									
TOLERANCES UNLESS OTHERWISE SPECIFIED				appr Pei-Ming Zheng		2016/07/14		product family HPCE				rel level Released			
surface -		linear		Amphenol FCi		title HPCE VT RECET 2LPI2S		dwg no 10140155		rev A					
		0.X ±0.50													
		0.XX ±0.25													
ASME Y14.5		0.XXX ±0.10													
		angular 0° ±2°				cat. no. -		Product - Customer Drw				sheet 4 of 4			

Mouser Electronics

Authorized Distributor

Click to View Pricing, Inventory, Delivery & Lifecycle Information:

[FCI / Amphenol:](#)

[10140155-004LF](#) [10140155-002LF](#)