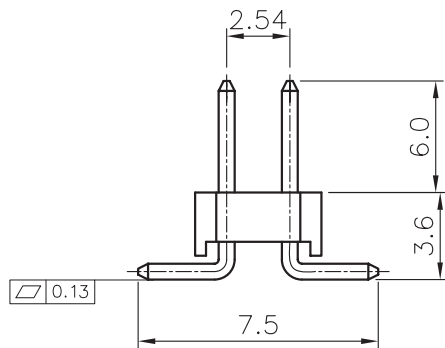
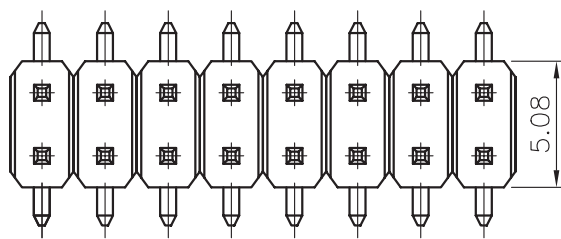
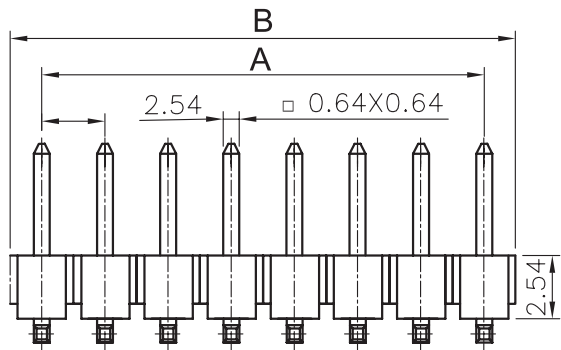


PCB LAYOUT - COMPONENT VIEW



TECHNICAL CHARACTERISTICS

MATERIAL  
INSULATOR: PA 6T  
FLAMMABILITY RATING: UL94-V0  
COLOR: BLACK  
CONTACT MATERIAL: COPPER ALLOY  
CONTACT TYPE: STAMPED  
CONTACT PLATING: GOLD  
QUALITY CLASS: 3 AS PER CECC 75 301-802  
PITCH: 2.54 MM

ENVIRONMENTAL  
OPERATING TEMPERATURE: -40 UP TO 125°C  
COMPLIANCE: LEAD FREE AND ROHS

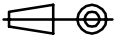

ELECTRICAL  
CURRENT RATING: 3A  
WORKING VOLTAGE: 250 VAC  
INSULATOR RESISTANCE: >1000 MOHM  
DIELECTRIC WITHSTANDING VOLTAGE: 500 VAC/MN  
CONTACT RESISTANCE: 20 mOHM MAX

STANDARD  
CERTIFIED: E323964

SOLDERING  
JEDEC LEAD FREE REFLOW SOLDERING

PACKAGING  
TUBE

DIMENSION  
A = 2.54x (NB. PIN / 2 - 1)  
B = 2.54x (NB. PIN / 2)

RoHS Compliant				PROJECTION: 	GENERAL TOLERANCE .X = +/- 0.2 .XX = +/- 0.15		DESCRIPTION: 2.54MM DUAL SMT PIN HEADER	SIZE <b>A4</b>
K	10-MAY-16	TPK	AK					
J	18-APR-16	TPK	AK					
I	03-NOV-11	PINNING	GG	APPROVAL: GMo	UNIT: MM	WERI PART NO: 610 0xx 211 21		
H	20-JUN-11	COPLANARITY	GG		SCALE:			
REV	DATE	FILE	BY		SHEET: 1/3			
					DRAW: PEARL			





# Mouser Electronics

Authorized Distributor

Click to View Pricing, Inventory, Delivery & Lifecycle Information:

## Würth Electronics:

[61002621121](#) [61000621121](#) [61003621121](#) [61001621121](#) [61001221121](#) [61003221121](#) [61002221121](#)  
[61002021121](#) [61001021121](#) [61003021121](#) [61001421121](#) [61003421121](#) [61002421121](#) [61000421121](#) [61001821121](#)  
[61000821121](#)