



**Part Number :** [1053131804](#)

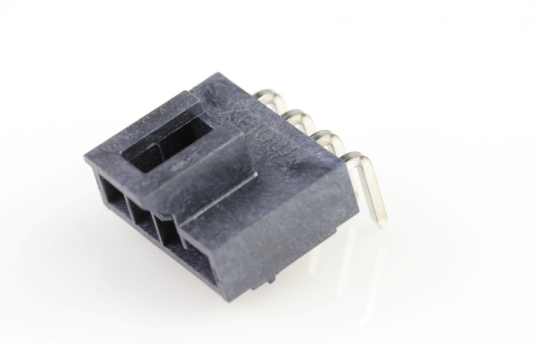
**Product Description :** Nano-Fit Right-Angle Header, Through Hole, 2.50mm Pitch, Single Row, 4 Circuits, 0.76µm Gold (Au) Plating, Lubricated, Black, Glow-Wire Capable, Tape and Reel

**Series Number :** 105313

**Status :** Active

**Product Category :** PCB Headers and Receptacles

**Packaging Alternative :** [1053131404 \(Tray\)](#)



---

## Documents & Resources

### Drawings

[Drawing 1053131804\\_sd.pdf](#)

[Packaging Design Drawing 1053131000-PK-000.pdf](#)

### 3D Models and Design Files

[3D Model 1053131804\\_stp.zip](#)

### Specifications

[Product Specification 1053001000-PS-CH-000.pdf](#)

[Product Specification 1053001000-PS-ES-000.pdf](#)

[Product Specification 1053001000-PS-JP-000.pdf](#)

[Product Specification 1053001000-PS-SK-000.pdf](#)

[Product Specification PS-105300-100-001.pdf](#)

---

## Product Environment Compliance

### Compliance

China RoHS	Not Reviewed
EU ELV	Not Reviewed
Low-Halogen Status	Not Reviewed
REACH SVHC	Not Reviewed
EU RoHS	Not Reviewed

### [Multiple Part Product Compliance Statements](#)

- Eu RoHS

- REACH SVHC

- Low-Halogen

#### Multiple Part Industry Compliance Documents

- IPC 1752A Class C

- IPC 1752A Class D

- Molex Product Compliance Declaration

- IEC-62474

- chemSHERPA (xml)

#### EU RoHS Certificate of Compliance

---

## Part Details

### General

Status	Active
Category	PCB Headers and Receptacles
Series	105313
Description	Nano-Fit Right-Angle Header, Through Hole, 2.50mm Pitch, Single Row, 4 Circuits, 0.76µm Gold (Au) Plating, Lubricated, Black, Glow-Wire Capable, Tape and Reel
Application	Power, Wire-to-Board
Component Type	PCB Header
Product Family	Nano-Fit Power Connectors
Product Name	Nano-Fit
UPC	193264646074

### Electrical

Current - Maximum per Contact	8.0A
Voltage - Maximum	250V AC (RMS)/DC

### Physical

Breakaway	No
Circuits (Loaded)	4
Circuits (maximum)	4
Color - Resin	Black
Durability (mating cycles max)	50
Glow-Wire Capable	Yes

Guide to Mating Part	No
Keying to Mating Part	Yes
Lock to Mating Part	Yes
Material - Metal	Brass
Material - Plating Mating	Gold
Material - Plating Termination	Tin
Material - Resin	Liquid Crystal Polymer
Net Weight	0.514/g
Number of Rows	1
Orientation	Right Angle
Packaging Type	Embossed Tape on Reel
PC Tail Length	3.20mm
PCB Locator	Yes
PCB Retention	Yes
PCB Thickness - Recommended	1.60mm, 2.40mm
Pitch - Mating Interface	2.50mm
Pitch - Termination Interface	2.50mm
Plating min - Mating	0.762µm
Plating min - Termination	1.524µm
Polarized to Mating Part	Yes
Polarized to PCB	Yes
Shrouded	Yes
Stackable	No
Temperature Range - Operating	-40° to +115°C
Termination Interface Style	Through Hole

---

## Mates With / Use With

### Mates with Part(s)

Description	Part Number
Nano-Fit Receptacle Housing, TPA Capable, 2.50mm Pitch, Single Row, 4 Circuits, Black, Glow-Wire Capable	<u>1053071204</u>

---

