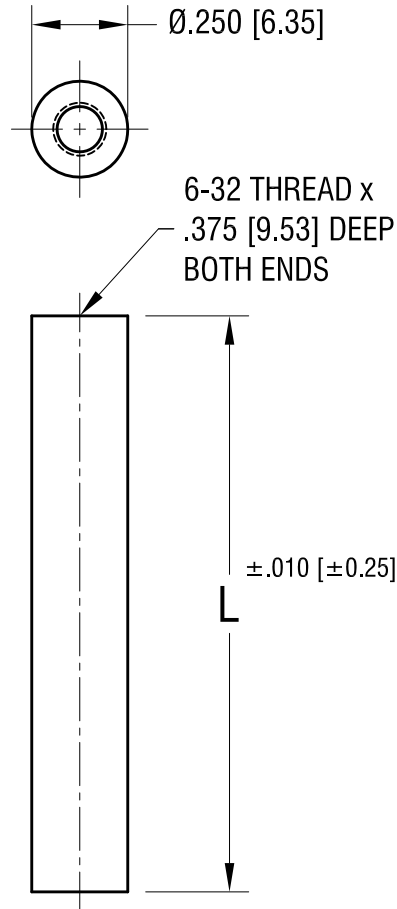
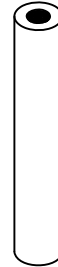


THIS DOCUMENT IS THE PROPERTY OF  
KEYSTONE ELECTRONICS CORP. AND  
SHALL NOT BE REPRODUCED, DISTRIBUTED  
OR USED AS A BASIS FOR MANUFACTURE  
WITHOUT PRIOR WRITTEN PERMISSION  
FROM KEYSTONE ELECTRONICS CORP.



ACTUAL SIZE

P/N 388



NOTE:

1. MAT'L: RESIN BASED MOLDED PHENOLIC

PART NO.	'L' DIM.
388	1.500 [30.48]
389	2.000 [50.80]

## KEYSTONE ELECTRONICS CORP.

www.keyelco.com • NEW HYDE PARK, NY 11040 • Tel (516) 328-7500

PART NAME

THREADED ROUND STANDOFF

MATERIAL

AS NOTED

FINISH

NONE

DRN BY

BOONE

DATE

7.06.00

APP'D

RH

SCALE

2X

9.28.23 CHANGE AS PER ECN 23-184

A

TOLERANCES INCH [MM]  
DECIMAL  $\pm .005$  [ $\pm 0.13$ ]  
ANGULAR  $\pm 1^\circ$   
UNLESS OTHERWISE SPECIFIED

CODE

C

DWG NO.

388-389

DATE

DESCRIPTION

REV.