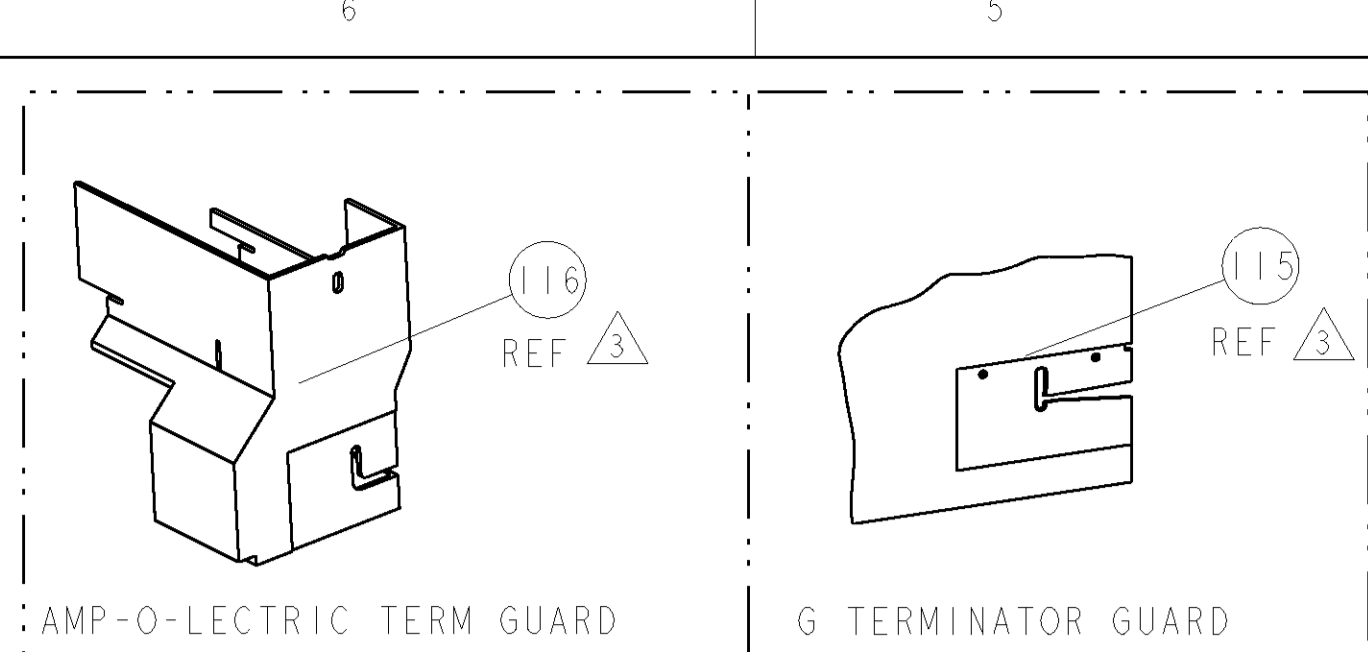


PART NUMBER	REV	FIRST USED	POWER UNIT	FEED TYPE	DESCRIPTION
1855479-1	A	122500-1	LEADMAKER	POST FEED	CUTS CARRIER
1855479-2	A	565435-5	BENCH MODEL K	PRE FEED	CUTS CARRIER
1855479-3	A	354500-1	BENCH MODEL G	PRE FEED	CUTS CARRIER
1855479-6	A	122500-1	LEADMAKER	POST FEED	CONTINUOUS CARRIER
7-1855479-7	A	-	-	-	SPARE PARTS

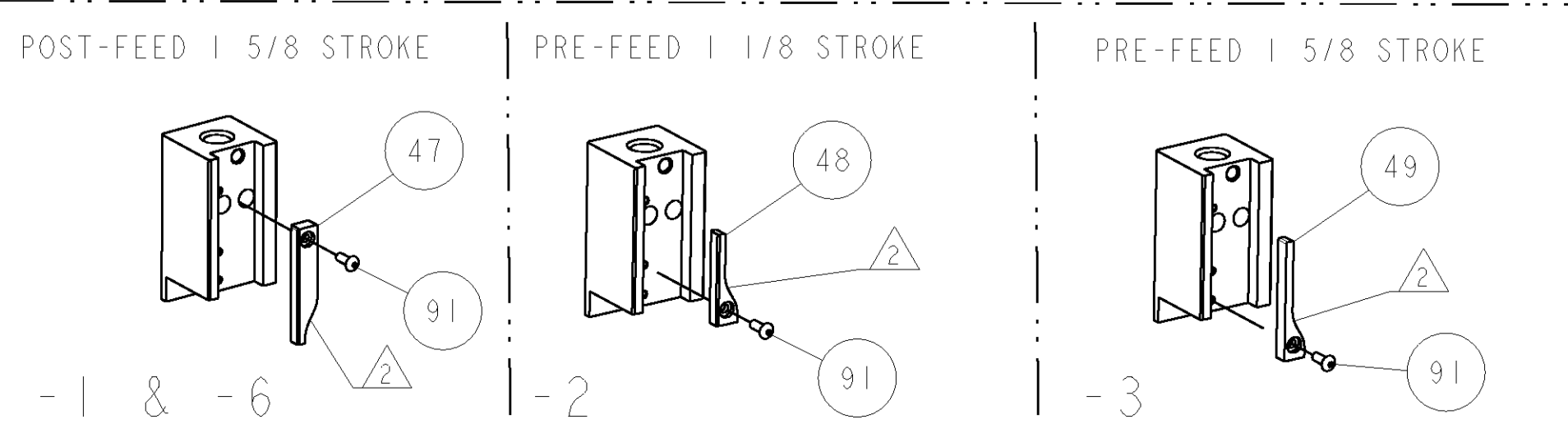
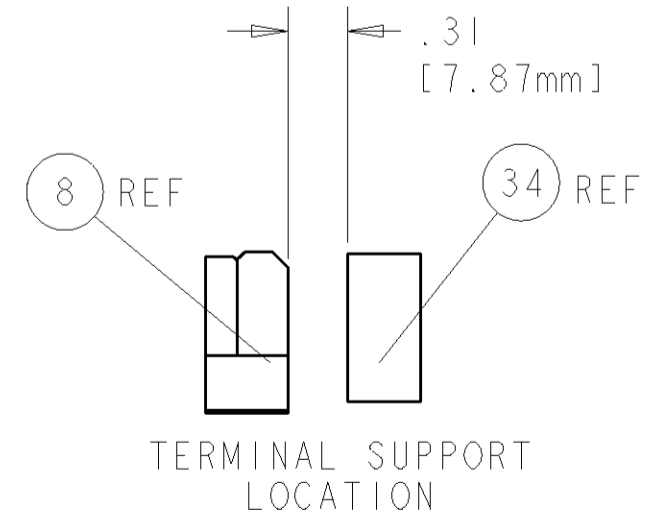
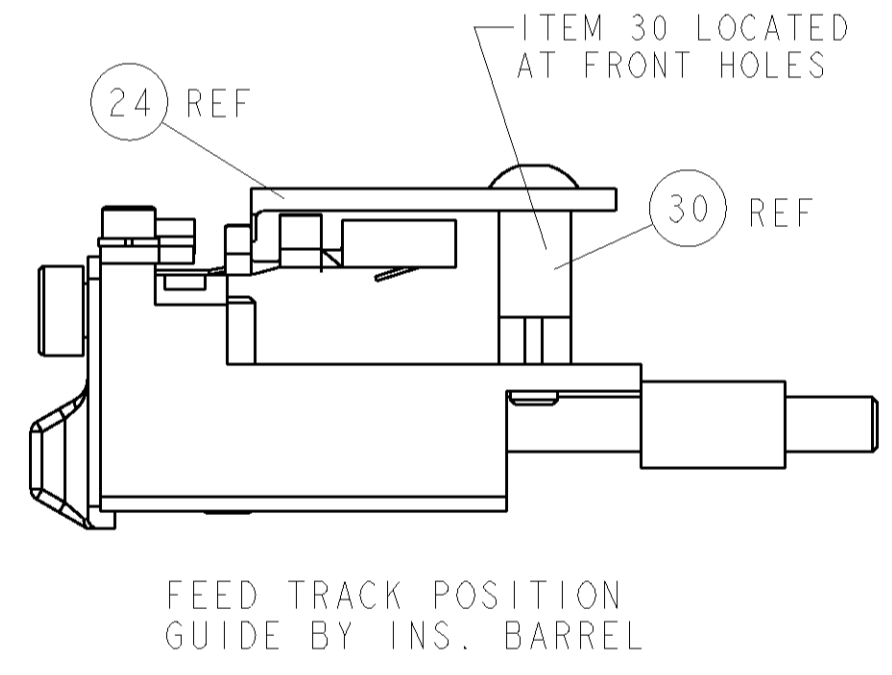
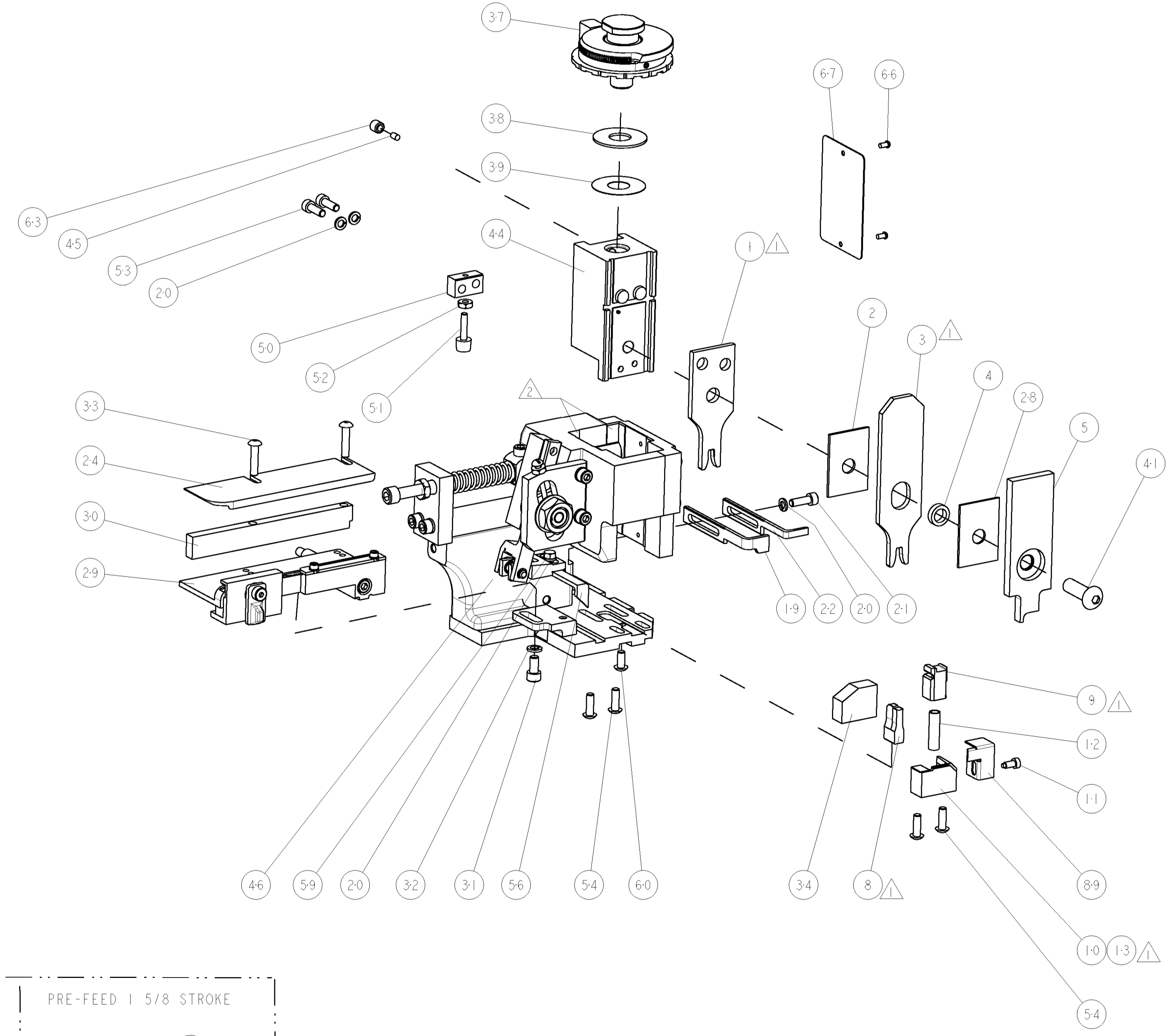


TERMINAL NAME: M/P 630 Special Tin Plated Terminal		DELPHI TERMINAL - DELPHI CRIMP SPECS		REF SETTING	
TE PN	DELPHI PN	CRIMP HEIGHT	WIRE SIZE		
1949883-1	12052227				
-	-				
-	-	2.15mm+.05/-0.05 [.085+.002/-0.002]	3.00mm ²	B9	
-	-				
-	-				
-	-				
-	-				
-	-				
-	-				
-	-				
WIRE STRIP LENGTH	TERM APPL SPEC	FEED	APPLICATOR INSTRUCTIONS	SET UP GAGE	
4.45-5.08	DELPHI	17.55	408-8040	458637-1	

- △ RECOMMENDED SPARE PARTS
- △ GREASE LIGHTLY
- △ GUARD MUST BE IN PLACE WHEN OPERATING APPLICATOR IN A BENCH MACHINE

*** WARNING**
ON INSTALLATION, SET WIRE DISC TO LARGEST WIRE SIZE SETTING. USE OF SETTINGS BELOW MIN. REQUIRED CRIMP HEIGHT SETTING WILL CAUSE DAMAGE TO CRIMP TOOLING.

LOC	DIST	REV	DESCRIPTION	DATE	DWN	APVD
A	66		RELEASED	27FEB2009	LG	TE



QTY	REF	DESCRIPTION	ITEM NO
1	REF	GUARD WINDOW	116
1	REF	INSERT, GUARD	115
1	1	SCR, BTN SKT HD CAP 6-32 X .375	91
1	1	GUARD, FRONT CHIP	89
1	1	SF APPL INST 408-8040	72
1	1	GENERAL INSTRUCTION PKG	71
1	1	PLATE, IDENTIFICATION	67
2	2	SCREW, DRIVE	66
1	1	SCR, SET, SELF LOCKING 1/4-20 X .250	63
1	1	SCR, BHSC, SELF-LOCKING, 8-32 X .375	60
1	1	SCR, HEX HD CAP 8-32 X .312	59
1	1	PAWL, FEED	56
1	1	SCR, BTN SKT HD CAP 8-32 X .500	54
2	2	SCR, SKT HD CAP 8-32 X .500	53
1	1	NUT, HEX, REG 6-32	52
1	1	BUMPER, HOLD DOWN	51
1	1	SPACER, TONKER	50
1	1	CAM, PRE FEED, 1 5/8	49
1	1	CAM, PRE FEED, 1 1/8	48
1	1	CAM, POST-FEED 1 5/8	47
1	1	APPL. BASIC SUB ASSY (SIDE WISE MOCA)	46
1	1	PLUG, NYLON	45
1	1	RAM, SIDE FEED	44
1	1	SCR, BTN SKT HD CAP 5/16-24 X 1.00	41
1	1	SHIM SUB-ASSY	39
1	1	SHIM	38
1	1	FINE ADJUST HEAD ASSEMBLY	37
1	1	TERMINAL SUPPORT	34
2	2	SCR, BTN SKT HD CAP 8-32 X .750	33
1	1	WASHER, SPRG LOCK, REG NO 10	32
1	1	SCR, SKT HD CAP 10-32 X .375	31
1	1	SPACER, STRIP GUIDE	30
1	1	ASSEMBLY, STRIP GUIDE	29
1	1	SPACER, CRIMPER	28
1	1	PLATE, STRIP GUIDE	24
1	1	STRIPPER	22
1	1	SCR, SKT HD CAP 8-32 X .500	21
4	4	WASHER, SPRG LOCK, REG NO 8	20
1	1	STRIPPER	19
1	1	SHEAR HOLDER, FRONT (NO CUT)	13
1	1	SPRING, COMPRESSION	12
1	1	STOP, SHEAR	11
1	1	SHEAR HOLDER, FRONT	10
1	1	FLOATING SHEAR, FRONT	9
1	1	ANVIL, COMBINATION	8
-	-	-	7
-	-	-	6
1	1	DEPRESSOR, SHEAR	5
1	1	BLOCK, CRIMPER SPACER	4
1	1	CRIMPER, INSULATION F	3
1	1	SPACER, CRIMPER	2
1	1	CRIMPER, WIRE	1

DIMENSIONS:	TOLERANCES UNLESS OTHERWISE SPECIFIED:	DRAWN	DATE	REV	DESCRIPTION	ITEM NO
INCHES	9 PLC ±.01 1 PLC ±.01 3 PLC ±.001 4 PLC ±.0001	DR. HUANG	10FEB2009	S. XI	FINE ADJUST SIDE FEED HDM APPLICATOR	-
MATERIAL	FINISH	APVD	DATE	NAME	SIZE	RESTRICTED TO
-	-	N. DEMING	10FEB2009	Tyco Electronics	A1	-
CUSTOMER DRAWING		SCALE		SHEET		REV
-		3:5		1		A

CUSTOMER VIEWABLE ASSEMBLY

Mouser Electronics

Authorized Distributor

Click to View Pricing, Inventory, Delivery & Lifecycle Information:

[TE Connectivity:](#)

[1855479-1](#)