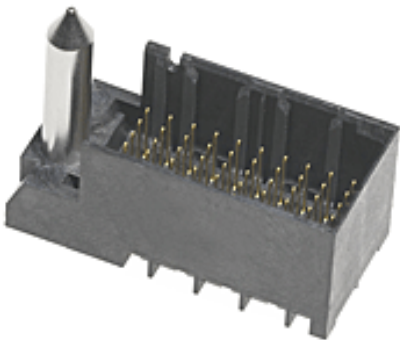




**Part Number :** [764557107](#)  
**Product Description :** Impact 100 Ohm 2 Pair Vertical Backplane Header, Left Guide, Right Endwall, 10 Columns, 60 Circuits, Pin Length 4.90mm, Plated Through Hole Dimension 0.39mm, Lead-Free  
**Series Number :** 76455  
**Status :** Active  
**Product Category :** Backplane Connectors



## Documents & Resources

**Drawings**  
[Drawing 764557107\\_sd.pdf](#)  
[Packaging Design Drawing PK-70873-761-001.pdf](#)

**3D Models and Design Files**  
[3D Model 764557107\\_stp.zip](#)  
[Symbol Footprint Data SYM-76455-7107-001.zip](#)

**Specifications**  
[Application Specification AS-76060-990-001.pdf](#)  
[Application Specification AS-76060-9999-001.pdf](#)  
[Product Specification PS-45499-002-001.pdf](#)  
[Product Specification PS-76060-999-001.pdf](#)  
[Test Summary TS-76460-0001-001.pdf](#)

## Product Environment Compliance

### Compliance

GADSL/IMDS	Compliant with Exemption 44; 34; 33
China RoHS	
EU ELV	Not Relevant
Low-Halogen Status	Low-Halogen per IEC 61249-2-21
REACH SVHC	Not Contained per D(2024)4144-DC (27 June 2024)
EU RoHS	Compliant per EU 2015/863

[Multiple Part Product Compliance Statements](#)

- Eu RoHS
- REACH SVHC
- Low-Halogen

#### Multiple Part Industry Compliance Documents

- IPC 1752A Class C
- IPC 1752A Class D
- Molex Product Compliance Declaration
- IEC-62474
- chemSHERPA (xml)

#### EU RoHS Certificate of Compliance

---

## Part Details

### General

Status	Active
Category	Backplane Connectors
Series	76455
Description	Impact 100 Ohm 2 Pair Vertical Backplane Header, Left Guide, Right Endwall, 10 Columns, 60 Circuits, Pin Length 4.90mm, Plated Through Hole Dimension 0.39mm, Lead-Free
Application	Conventional
Component Type	PCB Header
Product Family	Impact Backplane Connector and Cable Assembly System
Product Name	Impact
UPC	883906686956

### Agency

CSA	LR19980
UL	E29179

### Electrical

Current - Maximum per Contact	0.75A
Data Rate	25.0 Gbps
Impedance	100Ω
Shield Type	N/A

Shielded	No
Voltage - Maximum	30V AC (RMS)/DC

## Physical

Circuits (Loaded)	60
Circuits (maximum)	60
Color - Resin	Black
Durability (mating cycles max)	200
First Mate / Last Break	No
Guide to Mating Part	Yes
Keying to Mating Part	None
Material - Metal	High Performance Alloy (HPA)
Material - Plating Mating	Gold
Material - Plating Termination	Tin
Material - Resin	High Temperature Thermoplastic
Net Weight	4.113/g
Number of Columns	10
Number of Pairs	2
Number of Rows	6
Orientation	Vertical
Packaging Type	Tray
PC Tail Length	1.40mm
PCB Locator	No
PCB Retention	None
PCB Thickness - Recommended	1.00mm
Pitch - Mating Interface	1.90mm
Pitch - Termination Interface	1.90mm
Plating min - Mating	0.762µm
Polarized to PCB	Yes
Stackable	No
Temperature Range - Operating	-55° to +85°C
Termination Interface Style	Through Hole - Compliant Pin

---

## Mates With / Use With

Mates with Part(s)

Description	Part Number
Impact 100 Ohm 2 Pair Right-Angle Daughtercard Receptacles	<u>76460</u>