



PennEngineering

Corporate Headquarters – Danboro, PA

5190 Old Easton Rd.

Danboro, PA 18916

Phone: 215-766-8853

Toll-Free Phone: 1-800-237-4736 (U.S. only)

Email: info@pemnet.com

Website: www.pemnet.com

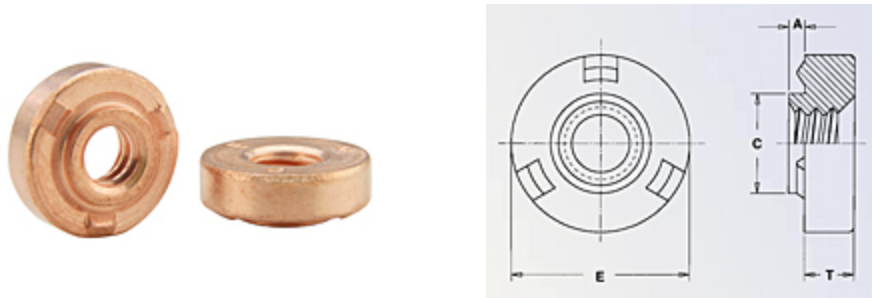
Part # WN-032-0CU, Self-Locating Projection Weld Nuts - Unified Type WN, WNS

PEM® weld nuts (Types WN/WNS) provide load-bearing threads in metal sheets too thin to tap, and permit faster assembly.

PEM brand weld nuts overcome many problems associated with other weld nuts – burn-outs, complicated electrodes and pilots, tedious time-consuming indexing and re-tapping to remove weld spatter. Their design, based on the experience of hundreds of users of weld nuts, speeds production using standard equipment, thereby reducing labor costs.

PEM stainless steel weld nuts offer the

[+ more](#)



Specifications



Thread Size .190-32 (#10-32)

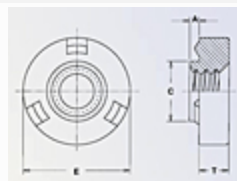
Type WN

Thread Code 032

Shank Code 0

Shank Diameter .030 in

A (Shank) Max.



Min. Sheet Thickness .030 in

Hole Size In Sheet + .004 - .000 .250 in

C Max. .249 in

E + .000 - .010 .440 in

T ± .004 .155 in

Min. Dist. Hole C/L to Edge	.22 in
Thread Specification	2B per ASME B1.1
Standard Material	Carbon Steel
Standard Finish	Copper Flash
CAD Supplier	PennEngineering® (PEM®)