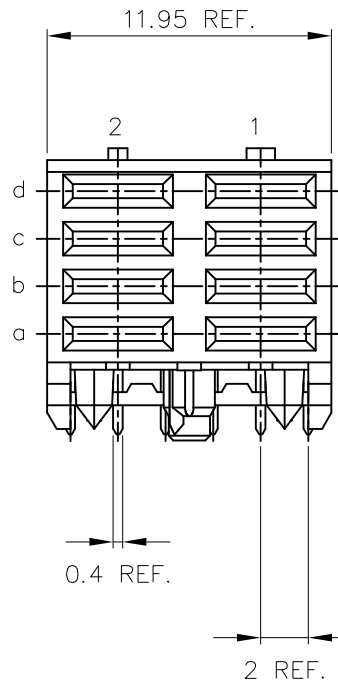
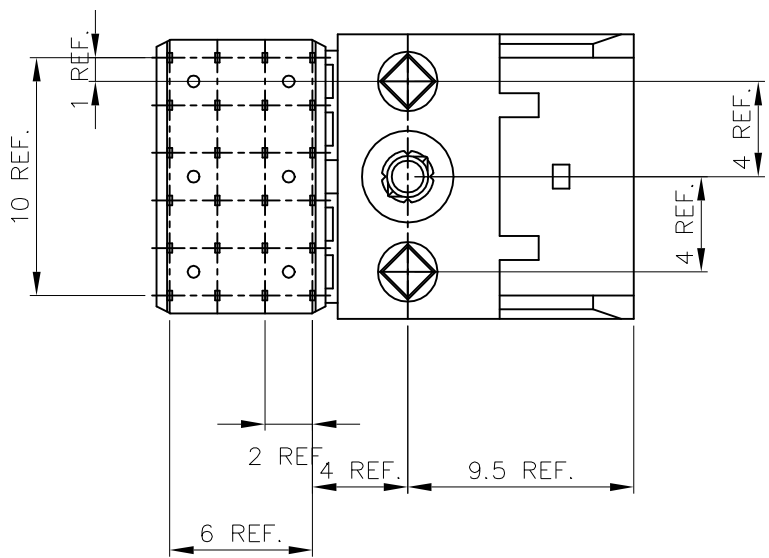
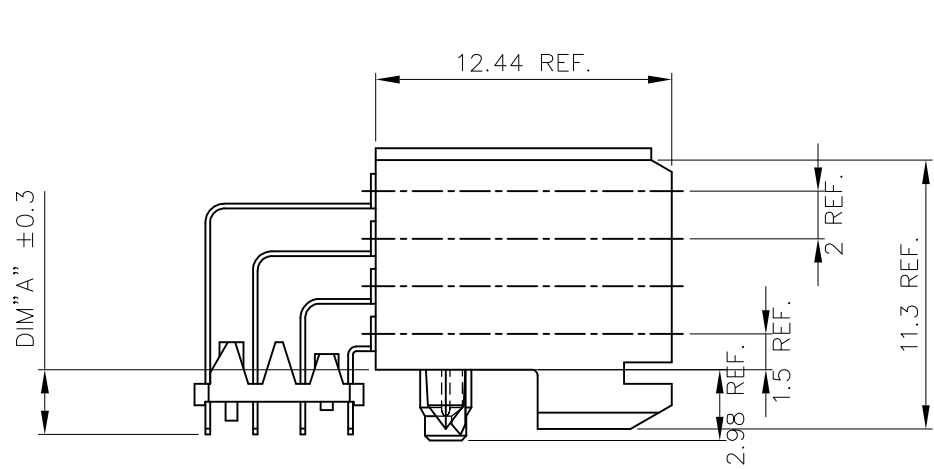


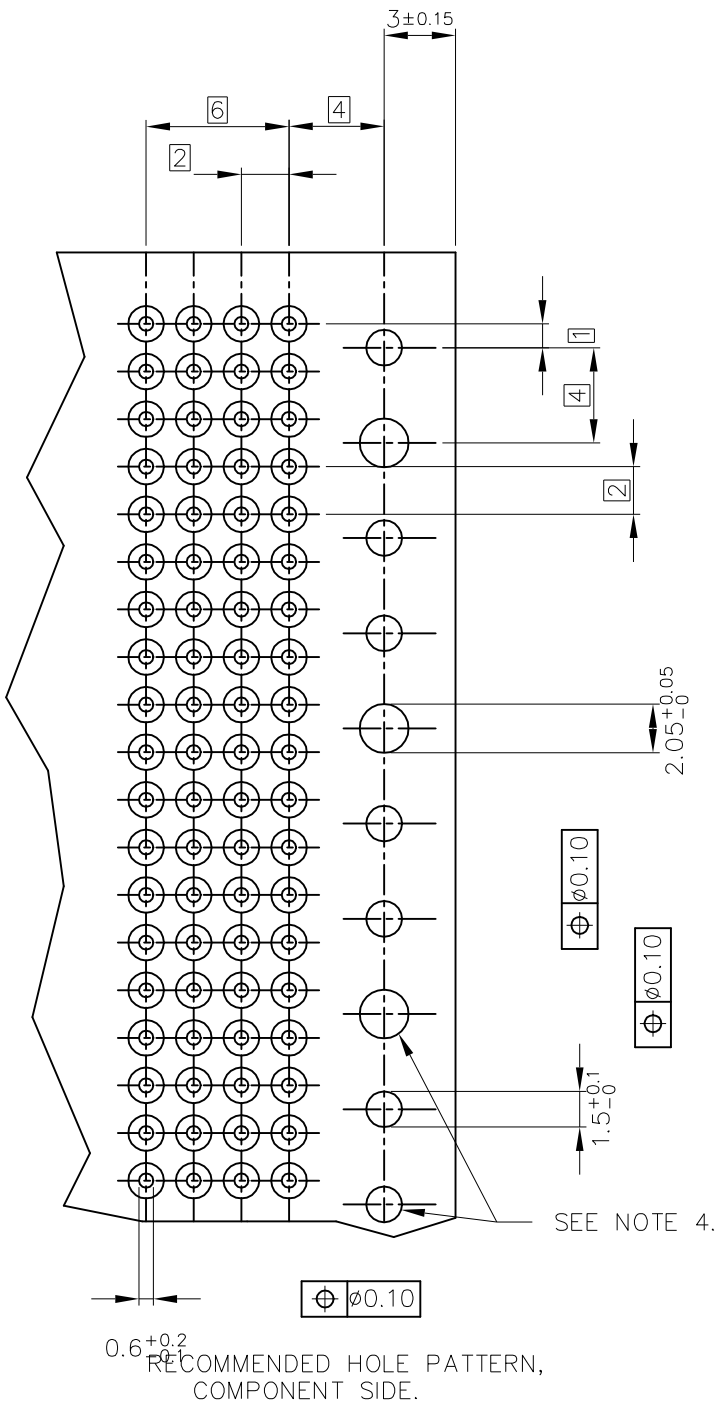
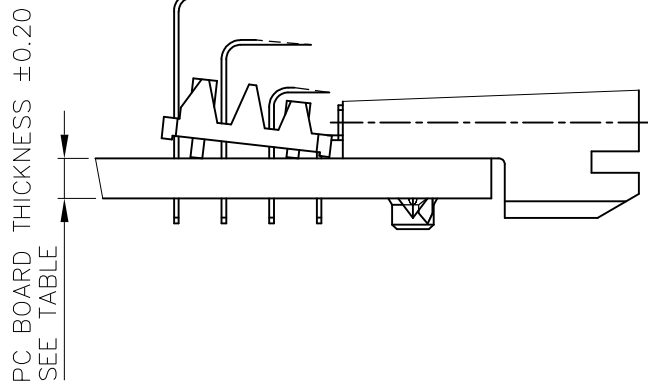
PLATING CONTACT AREA:	
DASH NR:	PERFORMANCE LEVEL
-1YY	TELCORDIA CO
-2YY	CUSTOMER SPECIAL
-3YY	CUSTOMER SPECIAL
-9YY	TELCORDIA CO
-2YYLF	CUSTOMER SPECIAL
-9YYLF	TELCORDIA CO
-1YYLF	TELCORDIA CO
-3YYLF	CUSTOMER SPECIAL

OBSOLETE
OBSOLETE
OBSOLETE
OBSOLETE
OBSOLETE
OBSOLETE

PC BOARD VERSIONS		
PRODUCTNR:	PCB THICKNESS	DIM "A"
89039-X01LF	1.6	2.90
89039-X11LF	2.4	3.53



PRODUCT AFTER PC BOARD APPLICATION.



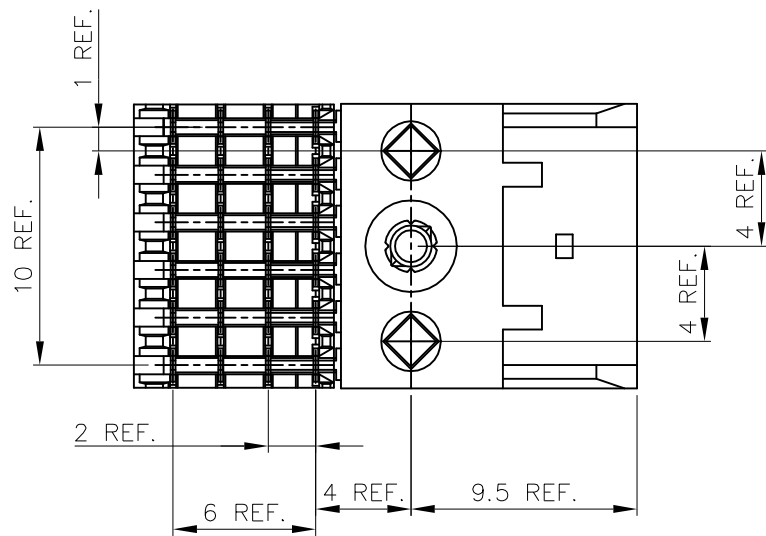
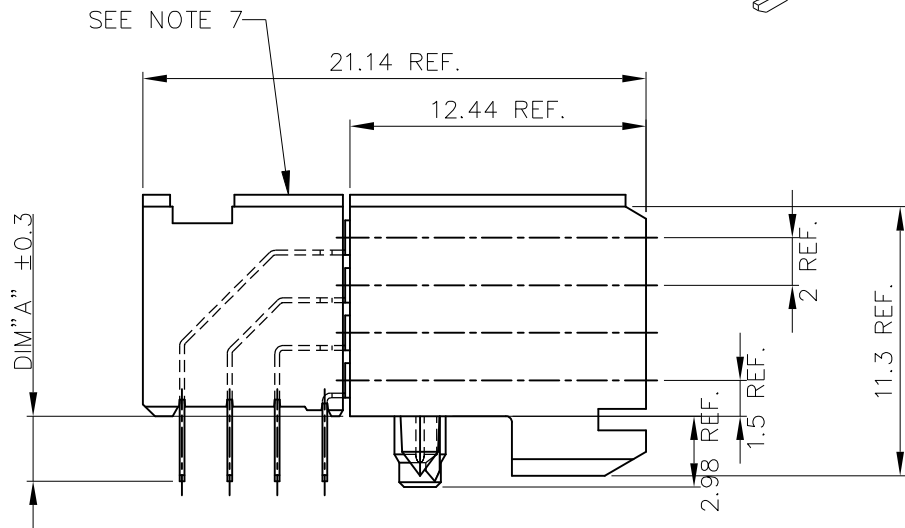
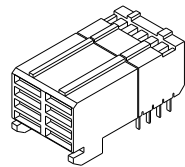
- NOTES:
- 1 BODY MAT'L: LIQUID CRYSTAL POLYMER 30% GLASS
FLAME RETARDANT ACC. UL 94-V0
 - 2 TERMINAL MATERIAL: PHOSPHOR BRONZE.
 - 3 INDICATED HOLES ARE UNPLATED.
 - 4 PRODUCTMARKING: PARTNUMBER & BATCH ID.
 - 5 THIS PRODUCT MEETS EUROPEAN UNION DIRECTIVES AND OTHER
COUNTRY REGULATIONS AS DESCRIBED IN GS-22-008
 - 6 THE HOUSING WILL WITHSTAND EXPOSURE TO 260DEGREE PEAK
TEMPERATURE FOR 10 SECONDS IN A WAVE SOLDER APPLICATION.
 - 7 THE PRODUCT SPECIFICATION GS-12-453.
 - 8 FOR THE PRODUCT WITH 30u" GOLD PLATING IN TERMINAL,
THEY CAN BE REPLACED BY 30 GXT PLATING.

mat'l. code				surface ISO 1302 ✓		tolerance ISO 406 ISO 1101		projection MM		product family METRAL			
ltr	ecn no	dr	date	tolerances unless otherwise specified		angles		linear		title			
K	DG08-0171	TER	2008-08-26	0.X ±0.30		0.XX ±0.15		.XXX ±0.05		RA FEMALE POWER			
L	N11-0131	A.ZH	2011-05-09	0±2°		0.XX ±0.15		.XXX ±0.05		RECEPTACLE 12mm PRESS PEG			
M	ELX-N-004595	A.ZH	2011-07-20	dr		H.BDUWKNEGT		1993-03-05		dwg no			
N	ELX-N-006420	A.ZH	2011-09-29	enr		H.BDUWKNEGT		1993-03-05		sheet 1 of 2			
P	ELX-N-26608	MZ	2017-03-27	chr		J.WINTJES		1993-03-05		size			
				appd		H.BDUWKNEGT		1993-03-05		89039			
										A3			
										type Product Customer Drawing			
sheet index	revision sheet	P	P										
		1	2										

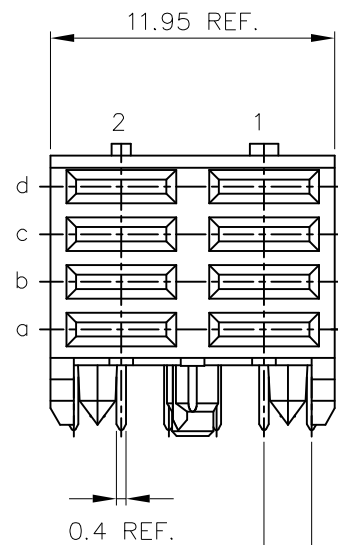


PLATING CONTACT AREA:	
DASH NR:	PERFORMANCE LEVEL
-1YY	TELCORDIA CO
-2YY	CUSTOMER SPECIAL
-3YY	CUSTOMER SPECIAL
-9YY	TELCORDIA CO
-2YYLF	CUSTOMER SPECIAL
-9YYLF	TELCORDIA CO
-1YYLF	TELCORDIA CO
-3YYLF	CUSTOMER SPECIAL

OBSOLETE
OBSOLETE
OBSOLETE
OBSOLETE
OBSOLETE
OBSOLETE

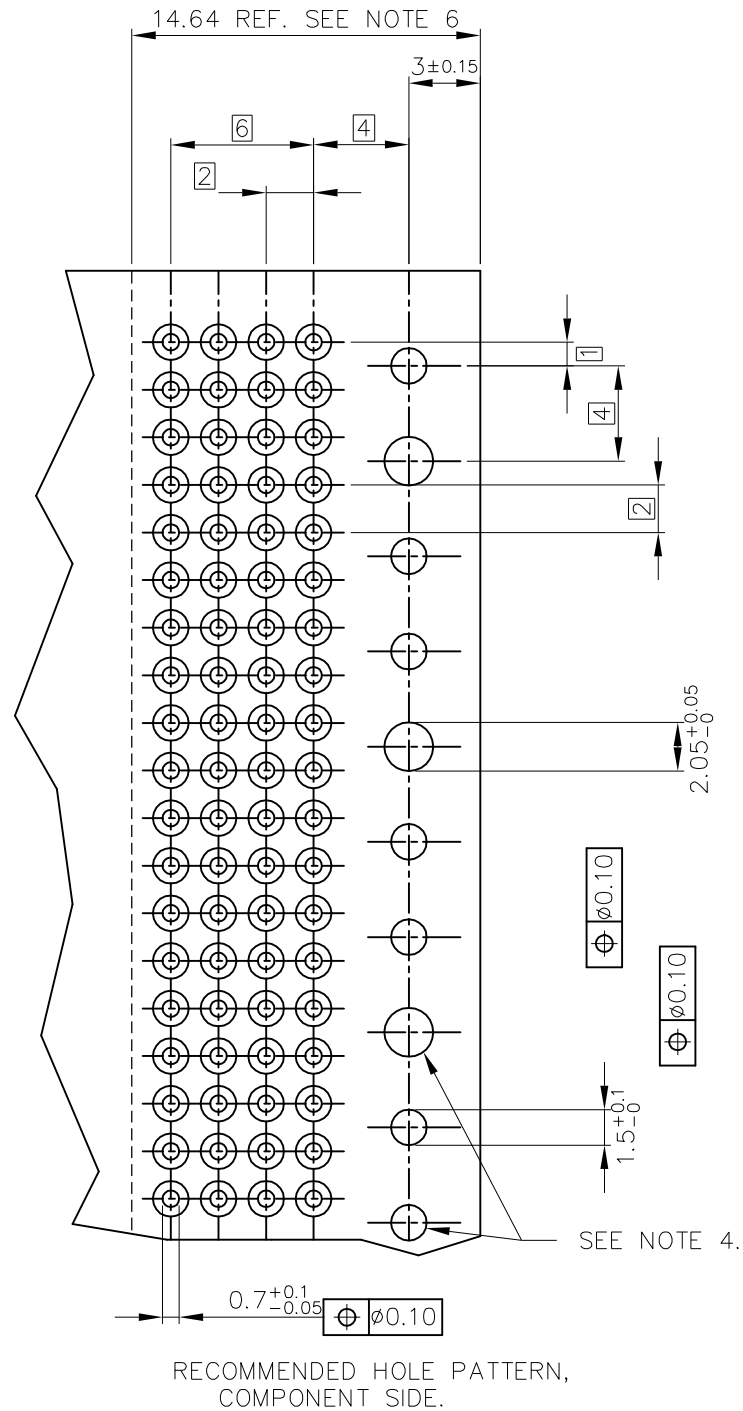
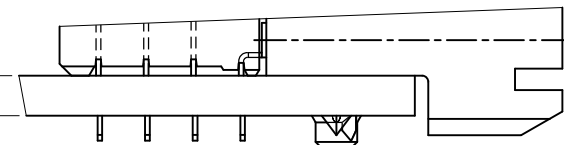


PC BOARD DIMENSIONS		
PRODUCTNR:	PCB THICKNESS	DIM "A"
89039-X02LF	1.6	2.90
89039-X12LF	2.4	3.53



PRODUCT AFTER PC BOARD APPLICATION.

PC BOARD THICKNESS ±0.20
SEE TABLE



NOTES:

- BODY MAT'L: LIQUID CRYSTAL POLYMER 30% GLASS
FLAME RETARDANT ACC. UL 94-V0
- TERMINAL MATERIAL: PHOSPHOR BRONZE.
- INDICATED HOLES ARE UNPLATED.
- PRODUCT MARKING: PARTNUMBER & BATCH ID.
- SET BACK FOR PRESS BLOCK.
- TOP SURFACE OF PRESS BLOCK MAY EXTEND UP TO 0.4MM HIGHER THAN HOUSING. THIS MAY AFFECT THE TAIL LENGTH BEFORE APPLICATION TO A BOARD
- THIS PRODUCT MEETS EUROPEAN UNION DIRECTIVES AND OTHER COUNTRY REGULATIONS AS DESCRIBED IN GS-22-008
- THE HOUSING WILL WITHSTAND EXPOSURE TO 260DEGREE PEAK TEMPERATURE FOR 10 SECONDS IN A WAVE SOLDER APPLICATION.
- THE PRODUCT SPECIFICATION GS-12-453.
- FOR THE PRODUCT WITH 30u" GOLD PLATING IN TERMINAL, THEY CAN BE REPLACED BY 30 GXT PLATING.

mat'l. code				surface ISO 1302 ✓	tolerance ISO 406 ISO 1101	projection 	product family METRAL
ltr	ecn no	dr	date	tolerances unless otherwise specified		MM scale 5:1	title
P				angles	linear		RA FEMALE POWER
				0±2°	.XXX ±.05		RECEPTACLE 12mm PRESS PEG
				dr	H.BDUWKNEGT	1993-03-05	dwg no
				enr	H.BDUWKNEGT	1993-03-05	sheet 2 of 2
				chr	J.WINTJES	1993-03-05	size
				appd	H.BDUWKNEGT	1993-03-05	89039 A3
sheet	revision						type Product Customer Drawing
index	sheet						

Mouser Electronics

Authorized Distributor

Click to View Pricing, Inventory, Delivery & Lifecycle Information:

[FCI / Amphenol:](#)

[89039-102](#) [89039-111LF](#) [89039-101](#) [89039-112](#) [89039-101LF](#) [89039-102LF](#) [89039-111](#) [89039-112LF](#)