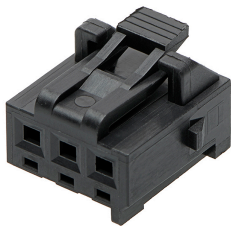




**Part Number :** [2078410003](#)  
**Product Description :** KK Plus 250 Receptacle Housing, 2.50mm Pitch, Single Row, 3 Circuits, UL 94V-0, Black, Glow-Wire Capable  
**Series Number :** 207841  
**Status :** Active  
**Product Category :** Connector Housings



## Documents & Resources

### Drawings

[2078410003\\_sd.pdf](#)  
[2078410000-PK-000.pdf](#)

### 3D Models and Design Files


[2078410003\\_stp.zip](#)

### Specifications

[2079020001-AS-000.pdf](#)  
[2079020001-PS-000.pdf](#)  
[2079020001-PS-CH-000.pdf](#)  
[2079020001-PS-ES-000.pdf](#)  
[2079020001-PS-JP-000.pdf](#)  
[2079020001-PS-SK-000.pdf](#)  
[2079020000-TS-000.pdf](#)

## Product Environment Compliance

### Compliance

|                    |   |
|--------------------|---|
| GADSL/IMDS         | Not Relevant  |
| China RoHS         |  |
| EU ELV             | Not Relevant  |
| Low-Halogen Status | Not Low-Halogen per IEC 61249-2-21  |
| REACH SVHC         | Not Contained per D(2024)4144-DC (27 June 2024)                                       |
| EU RoHS            | Compliant per EU 2015/863   |

Multiple Part Product Compliance Statements  
- Eu RoHS

- REACH SVHC

- Low-Halogen

#### Multiple Part Industry Compliance Documents

- IPC 1752A Class C

- IPC 1752A Class D

- Molex Product Compliance Declaration

- IEC-62474

- chemSHERPA (xml)

#### EU RoHS Certificate of Compliance

---

## Part Details

### General

|              |  |
|--------------|--|
| Status       | Active   |
| Category     | Connector Housings   |
| Series       | 207841   |
| Description  | KK Plus 250 Receptacle Housing, 2.50mm Pitch, Single Row, 3 Circuits, UL 94V-0, Black, Glow-Wire Capable |
| Application  | Power, Wire-to-Board   |
| Product Name | KK Plus  |
| UPC          | 191130123940   |

### Agency

|     |        |
|-----|--------|
| CSA | 152514 |
| UL  | E29179 |

### Physical

|                       |            |
|-----------------------|------------|
| Circuits (maximum)    | 3          |
| Color - Resin         | Black      |
| Flammability          | 94V-0      |
| Gender                | Receptacle |
| Glow-Wire Capable     | Yes        |
| Keying to Mating Part | None       |
| Lock to Mating Part   | Yes        |
| Material - Resin      | Nylon      |
| Net Weight            | 0.283/g    |

|                               |                |
|-------------------------------|----------------|
| Number of Rows                | 1              |
| Packaging Type                | Bag            |
| Panel Mount                   | No             |
| Pitch - Mating Interface      | 2.50mm         |
| Pitch - Termination Interface | 2.50mm         |
| Polarized to Mating Part      | Yes            |
| Stackable                     | No             |
| Temperature Range - Operating | -40° to +105°C |

---

## Mates With / Use With

### Mates with Part(s)

| Description                           | Part Number   |
|---------------------------------------|---------------|
| KK Plus 250 Vertical Shrouded Headers | <u>207843</u> |

### Use with Part(s)

| Description   | Part Number   |
|---|---------------|
| KK Plus 250 Female Crimp Terminals                      | <u>46626</u>  |
| KK Plus 250 Terminal Position Assurance (TPA) Retainers | <u>207845</u> |