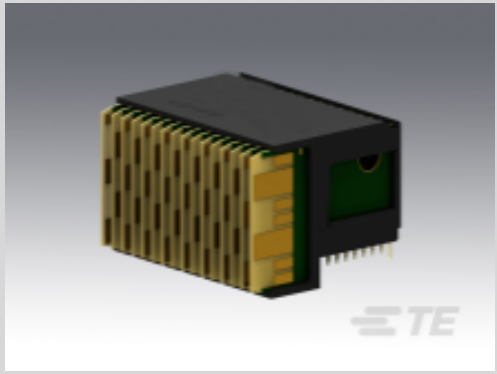




Connectors > PCB Connectors > Backplane Connectors > High Speed Backplane Connectors



Number of Positions: 112
Row-to-Row Spacing: 1.35 mm [.053 in]
Mating Alignment: With
Mating Alignment Type: Polarization
Number of Rows: 7

Features

Product Type Features

Compatible with PCB Type	Daughtercard
Connector System	Board-to-Board
Connector & Contact Terminates To	Printed Circuit Board
PCB Connector Assembly Type	PCB Mount Header
Shroud Style	Fully Shrouded

Configuration Features

Card Slot Centerline	20.3 mm[.8 in]
Backplane Architecture	Traditional Backplane
Number of Positions	112
Number of Rows	7
Number of Columns	16
PCB Mount Orientation	Right Angle
Guide Location	Center

Contact Features

Contact Current Rating (Max)	1 A
------------------------------	-----

Mechanical Attachment

Mating Alignment	With
------------------	------



Mating Alignment Type	Polarization
Connector Mounting Type	Board Mount

Housing Features

Number of Shrouded Sides	2
Centerline (Pitch)	1.8 mm[.071 in]

Dimensions

Row-to-Row Spacing	1.35 mm[.053 in]
--------------------	------------------

Usage Conditions

Operating Temperature Range	-55 – 105 °C[-67 – 221 °F]
-----------------------------	----------------------------

Operation/Application

Circuit Application	Power & Signal
---------------------	----------------

Product Compliance

For compliance documentation, visit the product page on [TE.com](#)>

EU RoHS Directive 2011/65/EU	Not Compliant
EU ELV Directive 2000/53/EC	Not Compliant
China RoHS 2 Directive MIIT Order No 32, 2016	Restricted Materials Above Threshold
EU REACH Regulation (EC) No. 1907/2006	Current ECHA Candidate List: JUNE 2024 (241) Candidate List Declared Against: JAN 2024 (240) Does not contain REACH SVHC
Halogen Content	BFR/CFR/PVC Free, but Br/Cl >900 ppm in other sources.
Solder Process Capability	Not applicable for solder process capability

Product Compliance Disclaimer

This information is provided based on reasonable inquiry of our suppliers and represents our current actual knowledge based on the information they provided. This information is subject to change. The part numbers that TE has identified as EU RoHS compliant have a maximum concentration of 0.1% by weight in homogenous materials for lead, hexavalent chromium, mercury, PBB, PBDE, DBP, BBP, DEHP, DIBP, and 0.01% for cadmium, or qualify for an exemption to these limits as defined in the Annexes of Directive 2011/65/EU (RoHS2). Finished electrical and electronic equipment products will be CE marked as required by Directive 2011/65/EU. Components may not be CE marked. Additionally, the part numbers that TE has identified as EU ELV compliant have a maximum concentration of 0.1% by weight in homogenous materials for lead, hexavalent chromium, and mercury, and 0.01% for cadmium, or qualify for an exemption to these limits as defined in the Annexes of Directive 2000/53/EC (ELV). Regarding the REACH Regulation, the information TE provides on SVHC in articles for this part number is based on the latest European Chemicals Agency (ECHA) 'Guidance on requirements for substances in articles' posted at this URL: <https://echa.europa.eu/guidance-documents/guidance-on-reach>



Compatible Parts



TE Part # 2000676-1

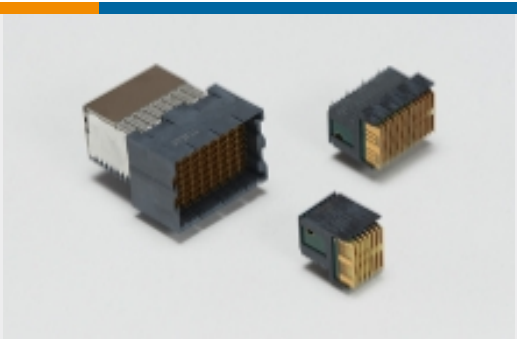
Keyed Guide Pin, Machined, Vita 46



TE Part # 2000713-1

RA Keyed Guide Mod, Vita 46, Machined

Also in the Series | MULTIGIG RT 2



High Speed Backplane Connectors(40)

Customers Also Bought



TE Part #1410189-3

MULTIGIG RT T2 7RW H-LFT,ET2



TE Part #1410142-1

MULTIGIG RT T2 .8" BP FULL RGH



TE Part #1410140-1

MULTIGIG RT T2 .8" BP FULL CNT



TE Part #1-881545-1

AMP SHUNT ASS'Y



TE Part #2302789-1

VERTRECASSY,CENTER,MULTIGIG RT3



TE Part #2302790-1

VERTRECASSY,RIGHTEND,MULTIGIG RT3



TE Part #2332817-1

Vert RCPT Left End Half Multigig RT 3



TE Part #1410188-1

MULTIGIG RT T2 7RW DC DF F-RGT



TE Part #2302791-1
VERTRECASSY,CENTER,RTM,
MULTIGIG RT3



TE Part #2313238-1
VERTRECASSY,J0/J1A,MULTIGIG RT3

Documents

Product Drawings

MULTIGIG RT T2 7RW DC DF CT

English

CAD Files

3D PDF

3D

Customer View Model

ENG_CVM_CVM_1410187-1_E.2d_dxf.zip

English

Customer View Model

ENG_CVM_CVM_1410187-1_E.3d_igs.zip

English

Customer View Model

ENG_CVM_CVM_1410187-1_E.3d_stp.zip

English

By downloading the CAD file I accept and agree to the Terms and Conditions of use.

Product Specifications

Electrical Performance Report

English

Instruction Sheets

Instruction Sheet (U.S.)

English